



U.S. Department
of Homeland Security
**United States
Coast Guard**

LOCAL NOTICE TO MARINERS

District: 11

Week: 48/12

SEND CORRESPONDENCE TO:
COMMANDER
DISTRICT ELEVEN (DPW)
COAST GUARD ISLAND BUILDING 50-2
ALAMEDA, CA 94501-5100

REFERENCES: COMDTPUB P16502.6, Light List Volume VI, 2012 Edition and Coast Pilot Volume 7. Coast Pilots, along with corrections, are available at: <http://www.nauticalcharts.noaa.gov/nsd/cpdownload.htm>.

BROADCAST NOTICE TO MARINERS - Information concerning aids to navigation and waterway management promulgated by BNM 0594-12 to BNM 0603-12 has been incorporated in this notice if still significant.

SECTION I - SPECIAL NOTICES

This section contains information of special concern to the Mariner.

SUBMITTING INFORMATION FOR PUBLICATION IN THE LOCAL NOTICE TO MARINERS

A complete set of guidelines with examples and contact information can be found at <http://www.uscg.mil/D11/DP/LnmRequest.asp> or call BM2 Austin Wilder at 510-437-2929 or e-mail D11LNM@uscg.mil. Please provide all Local Notice to Mariners submissions 14 days prior to the start of operations.

BRIDGE INFORMATION-DISCREPANCIES AND CORRECTIONS

For bridge related issues during normal working hours Monday through Friday, contact the Coast Guard Eleventh District Bridge Section, Coast Guard Island, Building 50-2, Alameda, CA 94501-5100, telephone: 510-437-3516 Office; 510-219-4366 Cell. For emergencies or discrepancies during nights, weekends and holidays, immediately notify the nearest Coast Guard Sector Command via VHF-FM chan. 16 or via telephone: San Diego & Colorado River 619-278-7031, Los Angeles 310-521-3800, San Francisco 415-399-7300, Eureka 707-839-6100. Flotsam may accumulate on and near bridge piers and abutments. Mariners should approach all bridges with caution.

To REPORT A DELAY AT A DRAWBRIDGE A report form is included in the Enclosures section of this Local Notice to Mariners.

DGPS

For information regarding the DGPS system, or to report GPS, DGPS, or AIS problems, mariners are advised to contact: <http://www.navcen.uscg.gov>, email: nisws@navcen.uscg.gov, or the USCG Navigation Center at 703-313-5900.

CALIFORNIA-LOW SULFUR FUEL REQUIREMENTS

Fuel Sulfur and Other Operational Requirements for Ocean Going Vessels within California Waters and 24 Nautical Miles of the California Baseline (California Code of Regulations, Section 2299.2). The regulations require vessels to burn either marine gas oil (MGO) with maximum 1.5% sulfur, or marine diesel oil (MDO) with maximum 0.5% sulfur, in their main and auxiliary engines. Vessel Masters are advised to review United States Coast Pilot #7 2012 (Edition 44) page 258 prior to entering California State waters. For more details or comments contact Captain Jeff Cowan, Department of Fish and Game, Office of Oil Spill Prevention and Response at 916-324-6450, fax 916-327-0907, or email jcowan@ospr.dfg.ca.gov.

LNM: 11/12

ELECTRONIC NAVIGATION CHARTS

RANGE STRUCTURES: The U.S. Coast Guard has become aware that Coast Guard information used to depict a range line on NOAA Electronic Navigational Charts (ENC) may not be of sufficient accuracy to accurately portray the range line on the ENC. Mariners are cautioned that the position of a range line as shown on an ENC may not reflect its true position.

LNM: 03/11

IMPORTANT SAFETY NOTICE ABOUT THE RELIABLE OPERATION OF ECDIS

Following an announcement by the International Maritime Organization (IMO) concerning potential display anomalies in some ECDIS systems, the International Hydrographic Organization (IHO) issued an ENC Data Presentation and Performance Check in October 2011. This check is intended to assist mariners and to help determine the extent of the anomalies. IHO has received reports from mariners confirming that a number of ECDIS fail to display some significant underwater features in the "Standard" display mode. For all significant objects to be visible to the mariner, these ECDIS must be operated in "Full display" or "All display" mode until a software upgrade is made available from the manufacturer. Mariners are strongly encouraged to use the IHO ENC Data Presentation and Performance Check issued through ENC service providers and also available directly from the IHO website (www.iho.int) to check the operation of their ECDIS and to determine whether their system is affected. IHO Circular Letter 33/2012 is available on the Coast Guard's Navigation Center website (<http://www.navcen.uscg.gov>) under the heading News and Notices.

LNM: 12/12

MARINE DEBRIS

With the increase in ocean debris sightings along the coastlines of the Pacific Ocean, mariners are reminded to submit debris sighting reports to the National Oceanic and Atmospheric Administration (NOAA) Marine Debris Program at DisasterDebris@noaa.gov.

LNM: 25/12

RADIOTELEPHONE DISTRESS WATCHKEEPING

Mariners are advised that calls to the Coast Guard on the international radiotelephone distress frequency 2182 kHz may not be reliably received by the Coast Guard. Areas where maritime broadcasts on 2670 kHz are being received satisfactorily by mariners should not be affected. Similarly, mariners using high frequency (HF) radiotelephones equipped with digital selective calling (DSC) capable of operating on the 4, 6, 8, 12 and 16 MHz distress frequencies should not be affected. Coast Guard watchkeeping services on these HF radiotelephone and DSC distress frequencies are posted at <http://www.navcen.uscg.gov/?pageName=cgcommsCall>.

Mariners who receive a distress alert or call that has not been acknowledged by the Coast Guard are asked to assist if possible and advise the nearest Coast Guard unit using whatever means are practicable.

LNM: 12/12

SOUTHERN CALIFORNIA-MARINE SAFETY INFORMATION BULLETIN

Some vessel operators are choosing to depart the Traffic Separation Scheme (TSS) established in the Santa Barbara Channel and transit through an area to the south of San Miguel, Santa Rosa and Santa Cruz Islands (referenced herein as "south of the Channel Islands"). As such, the Los Angeles / Long Beach Harbor Safety Committee has published voluntary western traffic lanes for vessels approaching and departing the Ports of Los Angeles and Long Beach.

Mariners transiting through the western and northern approaches to and from the Ports of Los Angeles and Long Beach (LA/LB) are advised the established TSS through the Santa Barbara Channel as shown on NOAA and Admiralty charts is the only International Maritime Organization (IMO) approved routing measure in this area. An IMO approved TSS reduces the risk of collision by providing for the separation of arriving and departing traffic and minimizing potentially hazardous crossing situations. Mariners, who have traditionally used this approved TSS, are encouraged to continue to do so.

For additional information please see MSIB Voluntary Traffic Lane 11-09.pdf in the Enclosures Section.

U.S. COAST GUARD PRECAUTIONARY TRANSIT NOTIFICATION VICINITY OF FUKUSHIMA, JAPAN

In response to the situation at the Fukushima Nuclear Power Plant in Japan, the U.S. Coast Guard recommends, as a precaution, that vessels avoid transiting within 20 kilometers/10.8 nautical miles of the Fukushima Nuclear Power Plant (37°25.5'N, 141°02.0'E).

Mariners are advised that this recommendation should be considered a minimum distance. Prudent route planning should incorporate prevailing and changing wind and weather conditions, in addition to the other precautionary measures.

In the event a vessel bound for a U.S. port transits within 20 kilometers/10.8 nautical miles of the Fukushima Nuclear Power Plant (37°25.5'N, 141°02.0'E) cautionary area, the U.S. Coast Guard requires the vessel's master to submit transit information, including the date and total time within the 20 kilometers/10.8 nautical miles cautionary area, to the cognizant U.S. Coast Guard Captain of the Port using the comment block in the routine submittal of their 96-hour Advanced Notice of Arrival.

The U.S. Coast Guard will provide an updated notice as additional guidance becomes available. Mariners should keep abreast of information being provided by the government of Japan relating to any further potential impacts.

LNM: 23/11

SECTION II - DISCREPANCIES

This section lists all reported and corrected discrepancies related to Aids to Navigation in this edition. A discrepancy is a change in the status of an aid to navigation that differs from what is published or charted.

DISCREPANCIES (FEDERAL AIDS)

LLNR	Aid Name	Status	Chart No.	BNM Ref.	LNM St	LNM End
181	NOAA Environmental Lighted Buoy 46025	LT EXT	18720	0215-12	18/12	
190	Port Hueneme Light	REDUCED INT	18724	0416-12	34/12	
300	Santa Cruz West Breakwater Light	SS IMCH	18685	0578-12	45/12	
382	NOAA Environmental Lighted Buoy 46059	MISSING	18007		22/12	
3585	Port Hueneme Light	REDUCED INT	18724	0416-12	34/12	
3635	Channel Islands Harbor Breakwater North Light	LT EXT/STRUCT DMGD	18725	0177-12-01	14/12	
4085	Santa Cruz West Breakwater Light	SS IMCH	18685	0578-12	45/12	
5215	Redwood Creek Light 10	TRLB/STRUCT DEST	18651	0642-11	41/11	
5840	San Rafael Creek Light 1	TRLB/STRUCT DEST	18649	0549-12-02	44/12	

DISCREPANCIES (FEDERAL AIDS) CORRECTED

LLNR	Aid Name	Status	Chart No.	BNM Ref.	LNM St	LNM End
185	Anacapa Island Light	WATCHING PROPERLY	18729	0594-12	47/12	48/12
1705	North Island Light N	WATCHING PROPERLY	18773	0591-12	47/12	48/12

DISCREPANCIES (PRIVATE AIDS)

LLNR	Aid Name	Status	Chart No.	BNM Ref.	LNM St	LNM End
1720	Navy Lighted Mooring Buoy	LT EXT	18773	0600-12	48/12	
1859	San Diego-Coronado Bay Bridge Racon T	RAC INOP	18773	0546-12	44/12	
1861	San Diego-Coronado Bay Bridge Racon C	RAC INOP	18773		48/12	
4475	San Francisco-Oakland Bay Bridge Pier I Fog Signal	SS INOP	18650	0152-12	13/12	
5575	Corte Madera Channel Light 14	LT EXT/STRUCT DEST	18653	0339-12	29/12	
6136	Vallejo Marina North Entrance Light 2	LT EXT	18655		47/12	

DISCREPANCIES (PRIVATE AIDS) CORRECTED

LLNR	Aid Name	Status	Chart No.	BNM Ref.	LNM St	LNM End
555	Battery Point Light	WATCHING PROPERLY	18603	0601-12	48/12	48/12

PLATFORM DISCREPANCIES

Name	Status	Position	BNM Ref.	LNM St	LNM End
None					

PLATFORM DISCREPANCIES CORRECTED

Name	Status	Position	BNM Ref.	LNM St	LNM End
None					

SECTION III - TEMPORARY CHANGES and TEMPORARY CHANGES CORRECTED

This section contains temporary changes and corrections to Aids to Navigation for this edition. When charted aids are temporarily relocated for dredging, testing, evaluation, or marking an obstruction, a temporary correction shall be listed in Section IV giving the new position.

TEMPORARY CHANGES

LLNR	Aid Name	Status	Chart No.	BNM Ref.	LNM St	LNM End
------	----------	--------	-----------	----------	--------	---------

1495	San Diego Bay Channel Lighted Buoy 5	RELOCATED FOR DREDGING	18773	46/12
1510	San Diego Bay Channel Lighted Buoy 6	RELOCATED FOR DREDGING	18773	46/12
1515	San Diego Bay Channel Lighted Buoy 7	RELOCATED FOR DREDGING	18773	46/12
1545	San Diego Bay Channel Lighted Buoy 8	RELOCATED FOR DREDGING	18773	46/12
1550	San Diego Bay Channel Lighted Buoy 9	RELOCATED FOR DREDGING	18773	46/12
1555	San Diego Bay Channel Lighted Buoy 10	RELOCATED FOR DREDGING	18773	46/12

TEMPORARY CHANGES CORRECTED

LLNR	Aid Name	Status	Chart No.	BNM Ref.	LNM St	LNM End
------	----------	--------	-----------	----------	--------	---------

None

PLATFORM TEMPORARY CHANGES

Name	Status	Position	BNM Ref.	LNM St	LNM End
------	--------	----------	----------	--------	---------

None

PLATFORM TEMPORARY CHANGES CORRECTED

Name	Status	Position	BNM Ref.	LNM St	LNM End
------	--------	----------	----------	--------	---------

None

SECTION IV - CHART CORRECTIONS

This section contains corrections to federally and privately maintained Aids to Navigation, as well as NOS corrections.

This section contains corrective actions affecting chart(s). Corrections appear numerically by chart number, and pertain to that chart only. It is up to the mariner to decide which chart(s) are to be corrected. The following example explains individual elements of a typical chart correction.

Chart Number	Chart Edition	Edition Date	Last Local Notice to Mariners	Horizontal Datum Reference	Source of Correction	Current Local Notice to Mariners
12327	91st Ed.	19-APR-97	Last LNM: 26/97	NAD 83		27/97
Chart Title: NY-NJ-NEW YORK HARBOR - RARITAN RIVER						
Main Panel 2245 NEW YORK HARBOR					CGD01	
(Temp) ADD	NATIONAL DOCK CHANNEL BUOY 3				at 40-41-09.001N	074-02-48.001W
Corrective Action	Green can	Object of Corrective Action		Position		

(Temp) indicates that the chart correction action is temporary in nature. Courses and bearings are given in degrees clockwise from 000 true. Bearings of light sectors are toward the light from seaward. The nominal range of lights is expressed in nautical miles (NM) unless otherwise noted.

18620	24th Ed.	01-FEB-12	Last LNM: 49/08	NAD 83		48/12
<i>Chart Title: Point Arena to Trinidad Head; Rockport Landing; Shelter Cove</i>						
Main Panel 1806 POINT ARENA TO TRINIDAD HEAD. Page/Side: N/A						
RELOCATE	Humboldt Bay Entrance Range Front Light CHANGE FOCAL PLANE TO 22FT.				CGD11 from 40-45-05.479N to 40-45-05.517N	124-13-35.545W 124-13-35.514W
RELOCATE	Humboldt Bay Entrance Range Rear Light CHANGE FOCAL PLANE TO 41FT.				CGD11 from 40-44-59.344N to 40-44-59.395N	124-13-28.885W 124-13-28.821W
18622	55th Ed.	01-JUN-10	Last LNM: 47/08	NAD 83		48/12
<i>Chart Title: Humboldt Bay</i>						
Main Panel 1809 HUMBOLDT BAY. Page/Side: N/A						
RELOCATE	Humboldt Bay Entrance Range Front Light				CGD11 from 40-45-05.479N	124-13-35.545W

CHANGE FOCAL PLANE TO 22FT.

to 40-45-05.517N

124-13-35.514W

RELOCATE Humboldt Bay Entrance Range Rear Light
CHANGE FOCAL PLANE TO 41FT.

CGD11

from 40-44-59.344N

124-13-28.885W

to 40-44-59.395N

124-13-28.821W

18649 67th Ed. 01-DEC-09 Last LNM: 21/12 NAD 83

48/12

ChartTitle: Entrance to San Francisco Bay

Main Panel 1823 SAN FRANCISCO ENTRANCE. Page/Side: N/A

ADD Wreck in Feet; 29 Wk (NOS NW-22299)

NOS

37-46-28.500N

122-19-23.600W

18650 56th Ed. 01-SEP-09 Last LNM: 20/12 NAD 83

48/12

ChartTitle: San Francisco Bay Candlestick Point to Angel Island

Main Panel 1824 SAN FRANCISCO BAY CANDLESTICK POINT TO ANGEL ISLAND. Page/Side: N/A

DELETE Sounding in Feet; 18 (NOS NW-22317)

NOS

37-47-15.300N

122-16-15.400W

DELETE Sounding in Feet; 34 (NOS NW-22299)

NOS

37-46-28.300N

122-19-21.200W

ADD Obstruction in Feet; 11 Obstn (NOS NW-22317)

NOS

37-47-13.200N

122-15-40.600W

ADD Obstruction in Feet; 17 Obstn (NOS NW-22317)

NOS

37-47-15.000N

122-16-14.300W

ADD Wreck in Feet; 19 Wk (NOS NW-22317)

NOS

37-47-12.900N

122-15-42.900W

ADD Wreck in Feet; 19 Wk (NOS NW-22317)

NOS

37-47-13.000N

122-15-43.900W

ADD Wreck in Feet; 29 Wk (NOS NW-22299)

NOS

37-46-28.500N

122-19-23.600W

18652 36th Ed. 01-FEB-11 Last LNM: 21/12 NAD 83

48/12

ChartTitle: San Francisco Bay to Antioch

Inset 1839 SAN FRANCISCO BAY TO ANTIOCH OAKLAND INNER HARBOR. Page/Side: b

DELETE Sounding in Feet; 16 (NOS NW-22317)

NOS

37-47-14.800N

122-16-15.100W

ADD Obstruction in Feet; 11 Obstn (NOS NW-22317)

NOS

37-47-13.200N

122-15-40.600W

ADD Obstruction in Feet; 17 Obstn (NOS NW-22317)

NOS

37-47-15.000N

122-16-14.300W

ADD Wreck in Feet; 19 Wk (NOS NW-22317)

NOS

37-47-12.900N

122-15-42.900W

ADD Wreck in Feet; 19 Wk (NOS NW-22317)

NOS

37-47-13.000N

122-15-43.900W

Main Panel 1828 SAN FRANCISCO BAY TO ANTIOCH. Page/Side: a

ADD Wreck in Feet; 29 Wk (NOS NW-22299)

NOS

37-46-28.500N

122-19-23.600W

18703 25th Ed. 01-JUL-03 Last LNM: 12/10 NAD 83

48/12

ChartTitle: Estero Bay;Morro Bay

CHART CA - ESTERO BAY. Page/Side: N/A

RELOCATE Morro Bay Channel Lighted Buoy 5
RELOCATE

CGD11

from 35-21-57.360N

120-51-59.712W

to 35-21-57.172N

120-52-00.823W

18740 43rd Ed. 01-JUL-11 Last LNM: 18/12 NAD 83

48/12

ChartTitle: San Diego to Santa Rosa Island

Main Panel 1893 SAN DIEGO TO SANTA ROSA ISLAND. Page/Side: N/A

DELETE Santa Monica Entrance Lighted Buoy 1 (LLNR 3550)

CGD11

34-00-10.237N

118-30-14.088W

18744 33rd Ed. 01-AUG-10 Last LNM: 16/09 NAD 83

48/12

ChartTitle: Santa Monica Bay;King Harbor

Main Panel 1894 SANTA MONICA BAY. Page/Side: N/A

DELETE Santa Monica Entrance Lighted Buoy 1 (LLNR 3550)

CGD11

34-00-10.237N

118-30-14.088W

SECTION V - ADVANCE NOTICES

This section contains advance notice of approved projects, changes to aids to navigation, or upcoming temporary changes such as dredging, etc. Mariners are advised to use caution while transiting these areas.

SUMMARY OF ADVANCED APPROVED PROJECTS

Approved Project(s)

Project Date

Ref. LNM

None

Advance Notice(s)

NORTHERN CALIFORNIA-WAMS ANNOUNCEMENT

The U.S. Coast Guard is conducting a Waterways Analysis Management System (WAMS) study of the Sacramento River. The study focuses on the area's aids to navigation, waterborne commerce, marine casualty information, port/harbor resources, emergency response plans, routing and emergency communication capabilities, and future development projects. Any interested company or individual wishing to provide recommendations on existing or additional aids to navigation in this area, participate in a user survey, or receive further information should contact: LTJG Joshua Dykman at (415) 399-3585, Joshua.v.dykman@uscg.mil or Chief Jason Koelle at (415) 399-3529, Jason.e.koelle@uscg.mil.

LNM: 45/12

SECTION VI - PROPOSED CHANGES

Periodically, the Coast Guard evaluates its system of aids to navigation to determine whether the conditions for which the aids to navigation were established have changed. When changes occur, the feasibility of improving, relocating, replacing, or discontinuing aids are considered. This section contains notice(s) of non-approved, proposed projects open for comment. SPECIAL NOTE: Mariners are requested to respond in writing to the District office unless otherwise noted (see banner page for address).

PROPOSED WATERWAY PROJECTS OPEN FOR PUBLIC COMMENT

Proposed Project(s)

Closing

Docket No.

Ref. LNM

None

Proposed Change Notice(s)

NORTHERN CALIFORNIA-PROPOSED CHANGE-SUISUN BAY

The U.S. Coast Guard is proposing to discontinue Suisun Bay Buoy's 1-8 (LLNR 6506, 6506.5, 6507, 6507.5, 6508, 6508.5, 6509, 6509.5) and Ryer Island Mooring Buoy located at 38-03-45.000N 122-00-50.400W. Direct any questions, comments, or feedback no later than 3 Dec 12 to LT Melissa Smith at 510-437-5984 or Melissa.A.Smith@uscg.mil.

Charts: 18652 18656 18658

LNM: 44/12

SECTION VII - GENERAL

This section contains information of general concern to the Mariners. Mariners are advised to use caution while transiting these areas.

ARIZONA-BRIDGE-COLORADO RIVER

Highway 62 Bridge at Parker, AZ.-Temporary trestles installed upstream and downstream for the replacement of the bridge, provide 10 feet vertical clearance above high water and 50 feet horizontal clearance at the main navigational channel span only. At night, the trestle piles are marked with red lights and the main channel span is marked with a center range of 2 green lights. Cable cross bracing may be present in all spans except the main channel span. Cables are marked with multi-colored flags. Orange buoys have been installed along the length of the trestles leaving an opening for vessels to pass through the main navigational channel span. Mariners are advised to use the main channel span only. No wake is requested through the project site. The bridge replacement project will be in progress through Dec 2013.

LNM: 18/11

CENTRAL CALIFORNIA-SURVEY-PITAS POINT

Fugro Inc. will conduct an oceanographic survey until 29 Nov 12, in an area bounded by the following coordinates:

34-18-54N 119-22-18W

34-19-07N 119-22-07W

34-18-55N 119-21-51W

34-18-44N 119-22-00W

The M/V JULIE ANN will be monitoring VHF-FM Chan. 13 and 16. Mariners are requested to transit the area with caution. For more details or comments contact Jeff Carothers or Eddie Stutts at 805-650-7000.

Chart 18725

LNM: 46/12

NEVADA-DGPS-AUSTIN

Unusable time is authorized for the following DGPS site for maintenance:

Austin

PRIMARY: 1600Z 27 Nov 12 - 0000Z 28 Nov 12

ALTERNATE: 1600Z 28 Nov 12 - 0000Z 29 Nov 12

Information on DGPS sites is available at the Coast Guard website www.navcen.uscg.gov. For more details or comments contact DGPS Watch at

NEVADA-DGPS-AUSTIN

703-313-5902/5816.

LNM: 47/12

NORTHERN CALIFORNIA-BOAT LOCK OPERATIONS-SUISUN BAY

The California Department of Water Resources will install flashboards across the maintenance channel at the Suisun Marsh Salinity Control Structure and begin operating the boat lock. All vessels requiring passage in either direction must use the boat lock. The boat lock will operate during daylight hours until 31 May 13, and monitor VHF-FM Chan. 13 during hours of operation. Mariners are requested to transit the area with caution. For more details or comments contact Dan Yamanaka at 916-574-0456.

Chart 18656

LNM: 42/12

NORTHERN CALIFORNIA-BRANNAN STREET WHARF PROJECT-PORT OF SAN FRANCISCO

Dutra Construction Co. will be conducting demolition, pile driving, rock replacement and casting a new wharf deck immediately adjacent to the Embarcadero just south of Pier 32 in San Francisco until Jun 2013. Construction will be restricted to daylight hours however towing of supply barges and maneuvering of the crane barge may continue at all hours. Mariners are requested to use caution while transiting the area. For more details or comments contact Bryan O'Sullivan at 415-686-3938.

Chart 18650

LNM: 25/12

NORTHERN CALIFORNIA-BRIDGE-CARQUINEZ STRAIT

The BENICIA-MARTINEZ Drawbridge fendering on the south side draw span has been damaged and may not provide adequate protection for the drawbridge.

Chart 18656

LNM: 37/11

NORTHERN CALIFORNIA-BRIDGE-CARQUINEZ STRAIT

I-80 NORTHBOUND HIGHWAY BRIDGE (UPSTREAM BRIDGE)-PIER FENDER REPLACEMENT- Floating equipment located at the center and northern channel piers, Monday through Friday, through May 2013, are lighted at night with red lights and reduce horizontal clearance in the channel spans by 115'. Barges will be removed from the channel when not engaged in work. (see enclosure at the end of this notice). During normal working hours the barges can be moved if requested for navigational safety with one hour notice by contacting the Tug DENISE LIND via VHF-FM channels 13/16. Emergency 24- hour contact telephone numbers include; Asghar Rezaei, Caltrans (925) 766-8280; Sean Eagan, Caltrans (510) 714-7041; Cu Mai, Golden State Bridge (GSB) (925) 864-3777; Jim Banbury, GSB (925) 726-7085; Dave Riccitiello, GSB (707) 246-0725. For further information contact the Coast Guard Bridge Office at (510) 437-3515. See enclosure section for I-80HWY_BargelightingDiagram.pdf 2012-05_AnchoringDiagram.pdf.

Chart 18656

LNM: 15/12

NORTHERN CALIFORNIA-BRIDGE-CARQUINEZ STRAIT

I-80 SOUTHBOUND SUSPENSION HWY BRIDGE (DOWNSTREAM BRIDGE) - Caltrans is painting the bridge using the rolling traveller attached to the underside of the bridge Monday through Friday, through 1 Jan 13. The 30 foot wide traveller reduces vertical clearance at the suspension bridge by 13 feet and is lighted at night with red lights. The traveller will be stored at the north channel pier or aligned with the center channel pier of the upstream bridge when not in use. Mariners may contact Caltrans via telephone at 510-715-7151 if additional information is needed.

Chart 18655

LNM: 43/11

NORTHERN CALIFORNIA-BRIDGE-MIDDLE RIVER

The BNSF Middle River Railroad Drawbridge is secured closed to navigation due to fire and mechanical failure. Estimated time of repair is unknown.

Chart 18661

LNM: 43/12

NORTHERN CALIFORNIA-BRIDGE-PEYTON SLOUGH

Tesoro Environmental is removing the pipeline bridge crossing Peyton Slough at Martinez, CA, in position: 38-01-55N 122-06-44W, adjacent to Waterfront Road, east of I-680, south of Carquinez Strait. Work will be in progress during daylight hours until 31 Dec 12. Mariners are requested to remain clear of the pipeline area. For more details or comments contact Matt Osowski 415-531-2474.

Chart 18657

LNM: 38/12

NORTHERN CALIFORNIA-BRIDGE-SACRAMENTO RIVER

ORD FERRY BRIDGE- Butte County has installed temporary trestles upstream and downstream of the bridge, from the eastern shore, for the seismic retrofitting project. The temporary trestles will be lighted at night with red lights. A navigational opening of 30 feet horizontal clearance will exist at the second span from the western shore.

LNM: 24/12

NORTHERN CALIFORNIA-BRIDGE-SAN FRANCISCO BAY

SAN FRANCISCO-OAKLAND BAY BRIDGE REPLACEMENT-EAST OF YERBA BUENA ISLAND (YBI)-The Coast Guard has established a temporary safety zone in the navigable waters of the San Francisco Bay near Yerba Buena Island CA during the removal of falsework through 31 Jul 13. This safety zone is established to protect mariners transiting the area from the dangers associated with disassembling of the falsework. Unauthorized persons or vessels are prohibited from entering into, transiting through, or remaining in the safety zone without permission of the Captain of the Port or their designated representative. See Enclosure at the end of this LNM for details on Safety Zone boundaries. Mariners are advised to avoid the construction area by using the main navigational channel west of YBI or the alternate channel, piers I-J (existing bridge) and piers E-3 E-4 (3rd and 4th piers east of YBI, new bridge), east of the construction site. Clearances for alternate channel are; 442 feet of horizontal clearance and 112 feet of vertical clearance at Mean High Water. Mariners transiting the area should proceed with caution to avoid creating unstable conditions for on-site workers. Temporary falsework is now in place and is lit at night with quick flashing red lights. See AlternateChannel.pdf and

NORTHERN CALIFORNIA-BRIDGE-SAN FRANCISCO BAY

2009_Falsework.pdf in the Enclosure Section of this Local Notice to Mariners for the Alternate Channel Marking and falsework diagram. Mariners may contact American Bridge/Fluor VHF-FM Chan. 73, or by telephone at 510-759-1325 (American Bridge/Fluor), to determine conditions at the bridge. The green center span lights have been temporarily extinguished in the three spans east of the main channel span. A large crane barge and material barges are anchored approximately 350 feet ENE of the YBI shoreline. Anchor lines extend approximately 1500 ft north and south of the barges, anchor buoys are lighted at night with quick flashing white lights. A crane barge and associated material barges are anchored approximately 600 feet ENE of the YBI shoreline to assist in the construction of the overall bridge. Anchor lines extend approximately 800 feet north and south of the barges, anchor buoys are lighted at night with quick flashing white lights. Barges are lighted at night with steady burning red lights. See 042210BargeDiagram.pdf in the Enclosure Section of this Local Notice to Mariners for the Barge Anchor Diagrams. For more details or comments contact the Eleventh Coast Guard District Bridge Office at 510-437-3461.

Chart 18650

LNM: 50/05

NORTHERN CALIFORNIA-BRIDGE-SAN FRANCISCO BAY

DUMBARTON HIGHWAY BRIDGE RETROFIT Barges reduce horizontal clearance in the main ship channel by approximately 20 feet and are lighted at night with red lights through 03 Dec 2012. The barges can be moved, for navigational safety, with one hour advance notice. Removal of the western Ravenswood Pier, just south of the the bridge, is in progress through Jan 2013. For conditions at the bridge mariners can contact the Caltrans contractor, Shimmick at Dumbarton Bridge Retrofit, on marine radio VHF-FM Chan. 14/16 or contact Ben Gordon 510-760-0152. For further information, contact the Coast Guard Bridge Office at 510-437-3515.

Chart 18651

LNM: 05/11

NORTHERN CALIFORNIA-BRIDGE-SAN JOAQUIN RIVER

ANTIOCH HIGHWAY BRIDGE: Caltrans will be conducting dive operations during daylight hours, 05-09 Dec 2012, inspecting various piers at the bridge. Caltrans dive operations will contact Coast Guard Vessel Traffic Service each morning to provide diving location. A 8' X 26' pilot house boston whaler will be onscene. Diver's umbilical hose may be floating on the surface adjacent to the vessel. All vessels are requested to contact the vessel CALTRANS on VHF-FM Chan. 09, 14, 16 or by cell 916-798-7148, approximately 30 minutes before transiting the bridge dive site. All passing vessels are requested to use extreme caution. For further information, mariners can contact the Coast Guard Bridge Office at 510 437-3515.

Chart 18661

LNM: 47/12

NORTHERN CALIFORNIA-COMMERCIAL POWER OUTAGE-ALCATRAZ LIGHT

The National Park Service will be securing commercial power to Alcatraz Light (LLNR-4315) from 0500 to 0900 local on 03, 10, 17, 24, and 31 Dec 12. During periods of unavailable commercial power, Alcatraz Light will automatically shift to the emergency light operating at a reduced intensity of 09 NM nominal range. In addition, Alcatraz North Fog Signal (LLNR-4325) will begin operating continuously sounding 2 blasts every 30 seconds. Upon restoration of commercial power, affected aids will resume normal operation. For more details or comments contact U.S. Coast Guard Aids to Navigation Team at 415-399-3515.

Chart 18650

LNM: 48/12

NORTHERN CALIFORNIA-DREDGING OPERATION-MARTINEZ MARINA

California Dredging Company will conduct continuous dredging operations until 15 Dec 12 in Position 38-01-52N 122-08-15W Dredge YUBA will monitor VHF-FM Chan. 16 and 69. Mariners are requested to transit area with caution. For more details or comments contact Jim Filomeo at 530-510-5378.

Chart 18657

LNM: 46/12

NORTHERN CALIFORNIA-DREDGING-CARQUINEZ STRAIT

The Benicia Harbor Corporation will be conducting continous dredging operations until 30 Nov 12 at the Benicia Marina Basin, on the north shore of the Carquinez Strait. The disposal site is designated in Carquinez Strait Disposal site (SF-09). Mariners are advised to use caution when transiting the area. M/V WANDA S will monitor VHF-FM Chan. 16. For more details or comments contact John Ash at 707-745-2250.

Chart 18656

LNM: 42/12

NORTHERN CALIFORNIA-DREDGING-EMERYVILLE

Vortex Marine Construction will conduct continuous dredging operations until 30 Nov 12 at the Emeryville Marina in position 37-50-38N 122-19-10W. All dredged material will be disposed of at the SF -11 Alcatraz Disposal site. DB VENGENGE and Tug LAGUNA will monitor VHF-FM Chan. 14 and 16. Mariners are requested to transit the area with caution. For more details or comments contact Ken Lago at 510-812-1548.

Chart 18649

LNM: 46/12

NORTHERN CALIFORNIA-DREDGING-MARE ISLAND STRAIT

Salt River Construction will conduct continuous dredging operations until 30 Nov 12 in Vallejo Marina in position: 38-06-39N 122-16-47W. D/B 1, with tug IRENE LAURITZEN will monitor VHF-FM Chan. 13, 14, and 77. Mariners are requested to transit the area with caution. For more details or comments contact Rick Moseley at 415-435-1024.

Chart 18655

LNM: 32/12

NORTHERN CALIFORNIA-DREDGING-MONTEREY HARBOR

The city of Monterey will conduct maintenance dredging in Monterey Harbor Monday through Thursday during daylight hours until 30 Mar 13. City workboat 373 and D/B TENACITY will monitor VHF-FM Chan. 73. Mariners are requested to transit the area with caution. For more details or comments contact Stephen Scheiblauber at 831-646-3950.

Chart 18685

LNM: 47/12

NORTHERN CALIFORNIA-DREDGING-OAKLAND HARBOR

Manson Construction Company will conduct continuous dredging operations until 30 Nov 12 at the Oakland Channel entrance and the Inner and Outer Harbor channels. Materials dredged will be transported via scows to the San Francisco Deep Ocean Disposal Site. D/B NJORD will monitor VHF-FM Chan. 13, 14, and 16. Mariners are requested to transit the area with caution. For more details or comments contact Kelly Williams at 510-773-7476.

Chart 18649

LNM: 42/12

NORTHERN CALIFORNIA-DREDGING-RICHMOND HARBOR

R. E. Staite Engineering will conduct continuous dredging operations until 14 Dec 12 in Richmond Harbor in position 37-54-12N 122-22-47W. Tug ALEXANDER, D/B PALOMAR, and PAULA LEE will monitor VHF-FM Chan. 13, 14, 16, and 82. Mariners are requested to transit the area with caution. For more details or comments contact Chad Carpenter at 619-233-0178.

Chart 18653

LNM: 44/12

NORTHERN CALIFORNIA-DREDGING-SAN FRANCISCO BAY

Salt River Construction will conduct continuous dredging operations until 30 Nov 12 at Lowrie Yacht Harbor in position 37-57-59N 122-30-27W. D/B 4 and D/B PC1000 with tug BRANDY BAR will monitor VHF-FM Chan 13, 14, and 78. Mariners are requested to transit the area with caution. For more details or comments contact Zachary Cohn at 415-435-1024.

Chart 18652

LNM: 33/12

NORTHERN CALIFORNIA-DREDGING-SAN RAFAEL

The Salt River Construction Corporation will be conducting dredging operations until 30 Nov 12, during day light hours in the San Rafael Canal. Self contained dredge/dump barges number 1, 2 and 4 and the D/B PC-1000 will be onsite during dredge operations. Tug BRANDY BAR and SILIA will be on scene monitoring VHF-FM Chan. 13, 14, and 78. Mariners are requested to transit the area with caution. For more details and comments contact Rick Moseley at 415-435-1024.

Chart 18652

LNM: 43/12

NORTHERN CALIFORNIA-DREDGING-STOCKTON AND SACRAMENTO DEEP WATER SHIP CHANNELS

Vortex Marine Construction will conduct dredging operations from 01 Dec 2012 until 30 Dec 2012 in the Stockton Deep Water Ship Channel from position 37-57-07N 121-19-47W, to 37-58-17N 121-22-29W. Tug LAGUNA will monitor VHF-FM Chan. 14 and 16. Mariners are requested to transit the area with caution. For more details or comments contact Ken Lago at 510-812-1548.

Charts: 18661 18662

LNM: 48/12

NORTHERN CALIFORNIA-DREDGING-STOCKTON DEEP WATER SHIP CHANNEL

Camenzind dredging company will conduct continuous dredging operations until 15 Dec 12 in the Stockton Sailing Club Marina in position 37-58-27N 121-22-19W. Dredge PAUL VINCENT and work boat FESTER will monitor VHF-FM Chan. 16 and 67. Mariners are requested to transit the area with caution. For more details or comments contact Kurt Camenzind at 650-424-0367.

Chart 18663

LNM: 41/12

NORTHERN CALIFORNIA-DREDGING-TIBURON

Salt River Construction will conduct dredging operations until 30 Nov 12 in Paradise Cay Yacht Harbor in position 37-54-56N, 122-28-30W. Barge DB2, PC100 and tug BRANDY BAR will monitor VHF-FM Chan. 13, 14, and 77. Mariners are advised to transit the area with caution. For more details or comments contact Rick Moseley at 415-435-1024.

Chart 18653

LNM: 36/12

NORTHERN CALIFORNIA-DREDGING-YERBA BUENA ISLAND

Dutra will conduct continuous dredging operations until 30 Nov 12 at the U.S. Coast Guard Boat Basin in position 37-48-65N 122-21-64W. D/B 24 and tugs ARTHUR BRUSCO and TROJAN will monitor VHF-FM Chan. 13, 14 and 80. Mariners are requested to transit the area with caution. For more details or comments contact John A. Krause at 415-254-4443.

Chart 18650

LNM: 46/12

NORTHERN CALIFORNIA-MARINE CONSTRUCTION-CRESCENT CITY

Dutra Construction Company will conduct reconstruction of Crescent City Inner Boat Basin in position 41-44-54N 124-11-03W until Feb 2014. C/B MORTY and work boat PHYLISS T will monitor VHF-FM Chan. 16 and 82. Mariners are requested to transit the area with caution. For more details or comments contact Brad Shoffit at 415-519-4262.

Chart 18603

LNM: 33/12

NORTHERN CALIFORNIA-MARINE CONSTRUCTION-MOSS LANDING

Associated Pacific Constructors Inc. will conduct Marina Construction Operations in the vicinity of Moss Landing until Feb 2013. The barge will be secured with anchors and spuds. M/V JULIE and Barge MERI will monitor VHF-FM Chan. 9 and 16. Mariners are requested to transit the area with caution. For more details or comments contact Paul Gillen at 805-234-5055.

Chart 18685

LNM: 36/12

NORTHERN CALIFORNIA-MARINE CONSTRUCTION-PORT OF REDWOOD CITY

Manson Construction will demolish and rebuild wharves 1 and 2 until Jan 2014 in the vicinity of 37-30-47N 122-12-36W. D/B HAGAR will monitor VHF-FM Chan. 14, 16, and 66. Mariners are requested to transit the area with caution. For more details or comments contact Bill Partridge at 510-

NORTHERN CALIFORNIA-MARINE CONSTRUCTION-PORT OF REDWOOD CITY

232-6319 or John Dees at 510-815-1938.

Chart 18651

LNM: 37/12

NORTHERN CALIFORNIA-MARINE CONSTRUCTION-SAN FRANCISCO

Manson Construction Company will be conducting pile driving, demolition and rebuilding of the Light Trestles 28R and 28L at San Francisco International Airport, in position 37-36-36N 122-20-16W. Construction operations will continue through Jan 2013. Barge WAHAKIYAKUM will be on scene. Mariners are requested to transit the area with caution. For more details or comments contact Doug Woodville at 510-232-6319.

Chart 18652

LNM: 44/12

NORTHERN CALIFORNIA-MARINE EVENT-SAN FRANCISCO BAY

Water World Swim will sponsor a swimming event involving 25 participants swimming from Alcatraz to Aquatic Park in San Francisco Bay from 0730 to 0830 on 01 Dec 12. Mariners are requested to transit the area with caution. For more details or comments contact MST1 J. Clark at 415-399-7440.

Chart 18649

LNM: 48/12

NORTHERN CALIFORNIA-NOAA BUOY LAUNCH-MONTEREY BAY

NOAA launched an environmental drifting buoy, in position 37-07-19N 122-12-50W. The buoy will travel south with the California current. Buoy is white with a black cylinder on top, and will have a drogue extending 15 meters behind it. Mariners are requested to transit the area with caution. For more details or comments contact Diane Stanitski at 301-427-2465.

Chart 18022

LNM: 38/12

NORTHERN CALIFORNIA-OCEANOGRAPHIC OPERATIONS-EUREKA

Scripps Institution of Oceanography will conduct multi-corer sediment coring operations until 01 Dec 12 in position 40-17-16N 124-47-43W. R/V MELVILLE will monitor VHF-FM Chan. 16. Mariners are requested to transit the area with caution. For more details or comments contact Amy Waterhouse at 858-822-4312.

Chart 18620

LNM: 45/12

NORTHERN CALIFORNIA-RESEARCH BUOY-MONTEREY

Monterey Bay Aquarium Research Institute has launched a yellow research buoy in position 36-43-30N 121-53-00W which will be recovered on 15 Dec 12. Mariners are requested to transit the area with caution. For more details or comments contact Mike Kelley at kemi@mbari.org.

Chart 18685

LNM: 46/12

NORTHERN CALIFORNIA-RESEARCH BUOYS-SAN FRANCISCO BAY

The City of San Francisco in partnership with Kinnetic Laboratories Inc, have deployed two yellow research buoys 4NM off Thornton State Beach, San Francisco in positions 37-42-29N 122-34-59W, and 37-41-58N 122-34-33W. The buoys will be removed Nov 2013. Each buoy stands 8 feet out of the water with radar reflectors and strobes flashing yellow once every 6 seconds. Mariners are requested to transit the area with caution. For more details or comments contact Greg Cotton at 831-239-6192.

Chart 18649

LNM: 25/12

NORTHERN CALIFORNIA-SHOALING-SAN FRANCISCO BAY

The Coast Guard has received a report of shoal water and Pier supports in the inland basin between pier 30/32 in position 37-47-08N 122-23-03W and pier 38 in position 37-46-58N 122-23-04W. Mariners are requested to transit the area with caution.

Chart 18652

LNM: 34/12

SOUTHERN CALIFORNIA-MARINE CONSTRUCTION-MORRO BAY

The U.S. Army Corps of Engineers will conduct pile driving operation and deck replacement in vicinity of 35-21-49N 120-51-11W until 01 Dec 12 in vicinity of 591 and 575 Embarcadero drive Morro Bay. Mariners are requested to transit the area with caution. For more details or comments contact John Markham at 805-585-2150.

Chart 18703

LNM: 44/12

SOUTHERN CALIFORNIA-BRIDGE-CERRITOS CHANNEL

REPLACEMENT SCHUYLER HEIM BRIDGE CONSTRUCTION - Two temporary eastern trestles are in place for construction of the replacement bridge. Temporary falsework is being erected over the trestle. The main navigation span through the construction site provides 75 feet of horizontal clearance and 43 feet of vertical clearance at Mean High Water. The temporary falsework and trestles are lighted at night with steady burning red lights. (See trestle/falsework lighting diagram enclosure at the end of this notice). Portions of the eastern fenders on the existing bridge have been removed. The western portions of the fenders remain in place. Construction activities will take place Monday through Friday, 0700 to 1530 local time. For conditions at the bridge mariners can contact; Caltrans, 213-444-1171; MCM Construction, 714-305-2725; MCM Construction, 714-330-5370. Mariners are urged to use caution while transiting the work site. See enclosure section for Heim_FalseworkTrestleBargeLighting.pdf and HEIM_fenderpierlightingplan.pdf.

Chart 18749

LNM: 45/11

SOUTHERN CALIFORNIA-BRIDGE-LA/LB HARBOR

SOUTHERN CALIFORNIA-BRIDGE-LA/LB HARBOR

VINCENT THOMAS BRIDGE REPAIRS-Temporary scaffolding will be erected 540 feet east of the west tower extending 132 feet further east towards the center of the span. The temporary scaffold will protrude below low steel, reducing vertical clearance by no more than 4 feet and will be lighted at night with steady burning red lights. (see enclosure at the end of this notice) Working hours are 0630 – 1500, Monday through Friday though 04 Jan 2013. For onsite conditions during working hours, Mariners can contact the contractor, Griffin Company, at (562) 292-2738 or (562) 922-1982. Caltrans 24-hour emergency contact number (323) 620-2764. see enclosure section for Vincent_Thomas_Bridge_Scaffold.pdf.

Chart 18749

LNM: 38/12

SOUTHERN CALIFORNIA-DIVING OPERATIONS-EL SEGUNDO

NRG El Segundo Operations Inc. will conduct diving operations from 03 Dec 12 through 07 Dec 12 in position 33-54-27N 118-25-59W. The M/V SUPPLIER will monitor VHF-FM Chan. 10, 13, and 16. Mariners are requested to transit the area with caution. For more details or comments contact Jason Jettie at 602-705-5739 or Ramon Aguilar at 310-529-3263.

Chart 18748

LNM: 48/12

SOUTHERN CALIFORNIA-DIVING OPERATIONS-SAN CLEMENTE ISLAND AND CATALINA ISLAND

U.S. Navy undersea rescue command will conduct diving operations from 3 Dec 12 through 11 Dec 12 in the vicinity of the following positions
32-23-43N 118-21-20W
33-24-00N 118-19-00W
32-23-43N 118-20-06W

The HOS DOMINATOR will be on scene monitoring VHF-FM Chan. 16.

Mariners are requested to maintain a 1NM distance from the positions and transit the surrounding area with caution. For more details or comments contact Michael Rocco at 619-545-6873.

Charts: 18740 18757

LNM: 48/12

SOUTHERN CALIFORNIA-DREDGING-LONG BEACH

Manson Construction Company will conduct continuous clamshell dredging operations in the Port of Long Beach, in the vicinity of pier D slip 1 until 30 Nov 12. Tug ELMER M, D/B VALHALLA, D/B H.R. MORRIS and scow NORTHPORT will monitor VHF-FM Chan. 13, 67 and 68. Mariners are requested to transit the area with caution. For more details or comments contact Manson Construction at 526-983-2340.

Chart 18751

LNM: 43/12

SOUTHERN CALIFORNIA-DREDGING-NEWPORT BAY

R.E. Staite Engineering Inc. will be conducting continuous maintenance dredging until 14 Feb 13 in Newport Bay in position 33-36-37N 117-54-20W. Vessel D/B PALOMAR and RES 180 crane barge will be on site and monitoring VHF-FM Chan. 16. For more details or comments contact R.E. Staite Engineering Walter Jellison at 619-233-0178 or 619-571-1050.

Chart 18754

LNM: 16/12

SOUTHERN CALIFORNIA-DREDGING-SAN DIEGO

Great Lakes Dredge & Dock Company LLC will conduct Imperial Beach reenforcement dredging until 30 Dec 12. Tug AMERICAN SPIRIT, MELISSA B, H/D LIBERTY ISLAND will collect sand from off shore Mission Beach in position 32-46-45N 117-16-28W and relocate it to 1NM off shore Imperial Beach in position 32-34-39N 117-09-17W, and monitor VHF-FM Chan. 13 and 16. Mariners are requested to transit the area with caution. For more details or comments contact Manny Vianzon at 630-209-6848.

Charts: 18765 18774

LNM: 35/12

SOUTHERN CALIFORNIA-DREDGING-SAN DIEGO

Great Lakes Dredge & Dock Company, LLC will conduct continuous dredging operations until 02 Feb 13 in the San Diego Approach Channel in position 32-38-09N 117-13-24W to 32-40-39N 117-13-46W. The Trailing Suction Hopper Dredger (TSHD) LIBERTY ISLAND and survey vessel EAST RIVER will monitor Marine VHF chan. 13 and 16. Mariners are requested to transit the area with caution. For more details or comments contact Manny Vianzon at 630-209-6848 or Mathew Bishop at 630-561-5060.

In support of Army Corp of Engineers and Great Lakes Dredge and Dock Company, LLC, San Diego Bay Approach and Entrance Channel Lighted Buoys: 5 (LLNR 1495), Lighted Buoy 6 (LLNR 1510), Lighted Buoy 7 (LLNR 1515), Lighted Buoy 8 (LLNR 1545), Lighted Buoy 9 (LLNR 1550), and Lighted Buoy 10 (LLNR 1555), have been temporarily relocated seventy five feet outboard of their assigned positions until 16 Dec 12 in order to support ongoing San Diego Entrance Channel Harbor dredging operations. For more details or comments contact BM1 Bryan Gollogly at 619-278-7267 or Bryan.R.Gollogly@USCG.MIL.

Charts: 18765 18772 18773

LNM: 45/12

SOUTHERN CALIFORNIA-DREDGING-SANTA BARBARA HARBOR

AIS Construction Company will be performing continuous dredging operations in Santa Barbara Harbor until 31 Dec 12. The cutter head dredge LA ENCINA and anchor boat KATHLEEN will monitor VHF-FM Chan. 6 and 16. Mariners are requested to transit the area with caution. For more details or comments contact Gary Foster, AIS Construction Company at 805-331-2995.

Chart 18725

LNM: 47/12

SOUTHERN CALIFORNIA-DREDGING/CONSTRUCTION-PORT OF LOS ANGELES

Manson Construction Co. is conducting construction and dredging operations until 31 Dec 13 at the Cabrillo Shallow Water Habitat construction zone. The tugboat ARAPAHO and the scow EASTPORT will transport surcharge material from the Southwest Slip to the Cabrillo Shallow Water Habitat, and will monitor VHF-FM Chan. 65, 67 and 13. Mariners are requested to transit the area with caution. For more details or comments

SOUTHERN CALIFORNIA-DREDGING/CONSTRUCTION-PORT OF LOS ANGELES

contact Randy Maddox at 206-303-7186. See Enclosures Section for 11 27 2012 LNTM.pdf.

Chart 18751

LNM: 44/10

SOUTHERN CALIFORNIA-FISHING GEAR RECOVERY-POINT DUME TO PURISIMA POINT

The University of California-Davis will conduct a fishing gear recovery project during daylight hours only from 03 Dec 12 through 16 Dec 12 in depths between 10 feet and 100 feet. This operation will take place in the Channel Islands National Marine Sanctuary; specifically off the coast of Ventura and Santa Barbara counties, Santa Catalina Island. M/V TRITON will monitor VHF-FM Chan. 8 and 16. Mariners are requested to transit the area with caution. For more details or comments contact Jennifer Renzullo at 707-483-8480 or jrrenzullo@ucdavis.edu.

Chart 18720

LNM: 48/12

SOUTHERN CALIFORNIA-HAZARDOUS OPERATION-SAN DIEGO

The U.S. Navy will conduct continuous hazardous operations 01 Dec 12 through 31 Dec 12, in an area bound by the following positions:

32-33-00N 118-25-00W

32-35-00N 118-16-00W

32-35-00N 117-40-00W

31-55-00N 117-40-00W

31-55-00N 118-25-00W

32-33-00N 118-25-00W

Mariners are advised to transit with caution. For more details or comments contact FACSFAC schedules at 619-545-1757.

Charts: 18740 18762

LNM: 48/12

SOUTHERN CALIFORNIA-MARINE CONSTRUCTION-LOS ANGELES

Connolly Construction Company will re-ballast the El Segundo Hyperion ocean outfall until 31 Dec 12 in position 33-55-00N 118-30-33W to 33-53-00N 118-28-00W. D/B LONG BEACH will remain on scene and will monitor VHF-FM Chan. 16. Mariners are requested to transit the area with caution. For more details or comments contact Earle Newman at 562-437-5836.

Chart 18748

LNM: 30/12

SOUTHERN CALIFORNIA-MARINE CONSTRUCTION-LOS ANGELES HARBOR

Reyes Construction Inc. will conduct dredging and pier repair at Berth's 86 in position 33-44-21N 118-10-43W and berth extension and backland development at berth 100 Port of Los Angeles until Nov 2013. D/B VANCOUVER, LOS ANGELES, and Tug ELMER M. will monitor VHF-FM Chan. 16 and 67. Mariners are requested to transit the area with caution. For more details or comments contact Reyes Construction Safety Director Jennifer Garcia at 562-743-1545.

Charts: 18749 18751

LNM: 16/12

SOUTHERN CALIFORNIA-MARINE CONSTRUCTION-MARINA DEL REY

Anchor QEA will conduct piling removal and replacement operations in Marina Del Rey at the Bay Club Marina until May 2013. Work boat LITTLE RED and barge BIG RED will monitor VHF-FM Chan. 72. Mariners are requested to transit the area with caution. For more details or comments contact Adam Gail at 949-347-2780.

Chart 18748

LNM: 37/12

SOUTHERN CALIFORNIA-MARINE CONSTRUCTION-PORT OF LONG BEACH

THUMS Long Beach Co. will conduct marine construction until 21 Dec 12 of pier J in position 33-44-24N 118-11-11W. Construction will take place during daylight hours. Mariners are requested to transit the area with caution. For more details or comments contact Tonia McMahon at 562-426-9551.

Chart 18751

LNM: 45/12

SOUTHERN CALIFORNIA-MARINE CONSTRUCTION-SAN DIEGO BAY

NEWest Construction Co. will conduct the removal and installation of fire main piping through 1 May 13 in position 32-44-08N 117-10-36W. Mariners are requested to transit the area with caution. For more details or comments contact Mark Jennette at 858-537-0774.

Chart 18773

LNM: 45/12

SOUTHERN CALIFORNIA-MARINE CONSTRUCTION-SAN DIEGO BAY

Manson Construction will demolish and rebuild Naval Base 32nd street pier 12 in position 32-41-39N 117-09-47W and upgrade pier 13 in vicinity of 32-39-38N 117-07-13W until 15 Jul 13. D/B VULCAN, scows ROCKPORT, SEAPORT and FOSS tug boat will monitor VHF-FM Chan. 16. All Mariners are requested to transit with caution. For more details or comments contact Terry Hammerwold at 510-773-6963.

Chart 18773

LNM: 16/12

SOUTHERN CALIFORNIA-MARINE EVENT-MORRO BAY

The Morro Bay Chamber of Commerce will be sponsoring the 2012 Morro Bay Holiday Boat Parade on 01 Dec 12. The parade will transit along the Morro Bay waterfront from 1800 to 2000. Approximately 50 boats will be participating. Mariners are requested to transit the area with caution and to keep speeds below 5 knots. US Coast Guard Station Morro Bay will be monitoring VHF-FM Chan. 13 and 16. For more details or comments contact BM1 Guy Langman at 310-521-3867.

Chart 18703

LNM: 48/12

SOUTHERN CALIFORNIA-MARINE EVENT-PORT OF LOS ANGELES

SOUTHERN CALIFORNIA-MARINE EVENT-PORT OF LOS ANGELES

The Port of Los Angeles will be sponsoring the 2012 Los Angeles Harbor Holiday Afloat Parade on 01 Dec 12. The parade will transit along the Port of Los Angeles Main Channel from 1800 to 2130. Approximately 75 boats will be participating. Mariners are requested to transit the area with caution and to keep speeds below 5 knots. This event is subject to a Special Regulated Area per 33CFR 100.1101. US Coast Guard Station Los Angeles and the Port of Los Angeles Port Police will be monitoring VHF-FM Chan. 13 and 16. For more details or comments contact BM1 Guy Langman at 310-521-3867.

Chart 18751

LNM: 48/12

SOUTHERN CALIFORNIA-RESEARCH BUOY-HUNTINGTON BEACH

Scripps Institution of Oceanography in conjunction with the Southern California Coastal Ocean Observing System (SCCOOS), will deploy a research buoy 1 nautical mile off shore from position 33-36-46N 117-58-29W. This buoy will be in place until approximately 15 Feb 13 to support an outfall diversion. The buoy will be located at the terminus of the Orange County Sanitation District (OCS) 78-inch outfall located in approximately 60 feet (20m) of water. The buoy is operated by Scripps Institution of Oceanography, Coastal Observing Research and Development Center. The buoy is a 4' diameter yellow foam buoy with a radar reflector and light FI Y 4s characteristic. For more details or comments contact Lisa Hazard at 858-822-2873 email: lhazard@ucsd.edu or J. Shannon Scott at 858-822-4071 email: jsscott@ucsd.edu.

Chart 18765

LNM: 33/12

SOUTHERN CALIFORNIA-UNDERWATER SURVEY-SANTA BARBARA

FUGRO Inc. will conduct underwater side scan surveys until 21 Dec 12 off shore of Goleta in an area bound by the following coordinates:

- 34-25-28N 119-54-33W
- 34-25-26N 119-54-36W
- 34-24-51N 119-54-32W
- 34-23-34N 119-54-00W
- 34-23-08N 119-54-19W
- 34-23-20N 119-54-39W
- 34-23-31N 119-54-29W
- 34-24-47N 119-54-30W
- 34-25-06N 119-55-01W
- 34-25-22N 119-54-59W
- 34-25-34N 119-54-51W

M/V CHINOOK will monitor VHF-FM Chan. 16. Mariners are requested to transit the area with caution. For more details or comment contact Eddie Stutts or Jeff Carothers at 805-650-7000.

Chart 18721

LNM: 47/12

SOUTHERN CALIFORNIA-UNDERWATER SURVEY-SANTA BARBARA

FUGRO Inc. will conduct underwater multibeam survey operations until 21 Dec 12 during daylight hours in the following positions:

- 34-26-04N 119-56-08W
- 34-22-57N 119-56-04W
- 34-22-02N 119-54-29W
- 34-21-34N 119-53-12W
- 34-21-21N 119-50-23W
- 34-22-09N 119-47-47W
- 34-25-06N 119-47-51W

M/V DANNY C will monitor VHF-FM Chan. 16. M/V DANNY C has limited maneuverability and will be towing up to 600 ft of cable during mapping operations. Mariners are requested to transit the area with caution. For more details or comments contact Eddie Stutts or Jeff Carothers at 805-650-7000.

Chart 18721

LNM: 47/12

SOUTHERN CALIFORNIA-WAVE ENERGY DEVICE TEST-SANTA BARBARA

Ecomerit Technologies, LLC will be conducting a test of a portion of its wave energy device between the hours of 0700 and 1700 until 07 Dec 12 in position 34-23-85N 119-50-38W. The wave energy test device will be tethered to a rigid inflatable boat and will monitor VHF-FM Chan. 16. Mariners are requested to transit the area with caution. For more details or comments contact Michael LaGrassa at 516-286-1835.

Chart 18721

LNM: 47/12

UTAH-DGPS-MYTON

Unusable time is authorized for the following DGPS site for maintenance:

Myton
 PRIMARY: 1500Z 30 Nov 12 - 2300Z 30 Nov 12
 ALTERNATE: 1500Z 01 Dec 12 - 2300Z 01 Dec 12
 Information on DGPS sites is available at the Coast Guard website www.navcen.uscg.gov. For more details or comments contact DGPS Watch at 703-313-5902/5816.

LNM: 48/12

SECTION VIII - LIGHT LIST CORRECTIONS

An Asterisk *, indicates the column in which a correction has been made to new information

(1) No.	(2) Name and Location	(3) Position	(4) Characteristic	(5) Height	(6) Range	(7) Structure	(8) Remarks	(9) Date
3860	<i>Morro Bay Channel Lighted Buoy 5</i>	35-21-57.172N 120-52-00.823W	FI G 4s		4	Green.	Buoy maybe frequently relocated due to changing conditions.	48/12
		*						
8165	HUMBOLDT BAY ENTRANCE RANGE FRONT LIGHT	40-45-05.517N 124-13-35.514W	Q G	22		KRW on pile.	Visible 1.5° each side of the rangeline. Lighted throughout 24 hours.	48/12
		*						
8170	HUMBOLDT BAY ENTRANCE RANGE REAR LIGHT 269 yards, 140.3° from front light.	40-44-59.395N 124-13-28.821W	Oc G 4s	41		KRW on pile.	Visible 1.5° each side of the rangeline. Lighted throughout 24 hours.	48/12
	*	*		*				

PUBLICATION CORRECTIONS

None

ENCLOSURES

SOUTHERN CALIFORNIA-MARINE SAFETY INFORMATION BULLETIN

[MSIB Voluntary Traffic Lane 11-09.pdf](#)

See link above.

LNM: 09/10

REPORT OF DELAY AT DRAWBRIDGE

[DelayRept0207.pdf](#)

Use link above to Report a Delay at a Drawbridge.

LNM: 06/07

SOUTHERN CALIFORNIA-BRIDGE-LA/LB HARBOR-VINCENT THOMAS BRIDGE REPAIRS

[Vincent_Thomas_Bridge_Scaffold.pdf](#)

See link above for depiction of scaffold position and lighting.

Chart 18749

LNM: 38/12

NORTHERN CALIFORNIA-BRIDGE-CARQUINEZ STRAIT

[I-80HWY_BargelightingDiagram.pdf](#) [2012-05_AnchoringDiagram.pdf](#)

See Above for I-80 HIGHWAY BRIDGE Barge Lighting and Anchoring Diagram

Chart 18656

LNM: 15/12

SOUTHERN CALIFORNIA-BRIDGE-CERRITOS CHANNEL-HEIM CONSTRUCTION

[Heim_FalseworkTrestleBargeLighting.pdf](#) [HEIM_fenderpierlightingplan.pdf](#)

See link above

Chart 18749

LNM: 45/11

SOUTHERN CALIFORNIA-DREDGING/CONSTRUCTION-PORT OF LOS ANGELES

[11 27 2012 LNTM.pdf](#)

See link above.

LNM: 44/10

M. J. Salas
U.S. Coast Guard
Chief, Waterways Management Branch



U. S. Coast Guard Sector Los Angeles – Long Beach

MARINE SAFETY INFORMATION BULLETIN 11-09

Los Angeles / Long Beach Harbor Safety Committee Voluntary Western Traffic Lanes

There has been a recent trend in traffic patterns where some vessel operators are choosing to depart the Traffic Separation Scheme (TSS) established in the Santa Barbara Channel and transit through an area to the south of San Miguel, Santa Rosa and Santa Cruz Islands (referenced herein as “south of the Channel Islands”). As such, the Los Angeles / Long Beach Harbor Safety Committee has published voluntary western traffic lanes for vessels approaching and departing the Ports of Los Angeles and Long Beach.

Mariners transiting through the western and northern approaches to and from the Ports of Los Angeles and Long Beach (LA/LB) are advised the established TSS through the Santa Barbara Channel as shown on NOAA and Admiralty charts is the only International Maritime Organization (IMO) approved routing measure in this area. An IMO approved TSS reduces the risk of collision by providing for the separation of arriving and departing traffic and minimizing potentially hazardous crossing situations. Mariners, who have traditionally used this approved TSS, are encouraged to continue to do so.

Voluntary Western Traffic Lanes

To address the safety concerns created by increased traffic south of the Channel Islands, on October 6, 2009, the Los Angeles/Long Beach Harbor Safety Committee (LA/LB HSC) endorsed voluntary traffic lanes in the area south of the Channel Islands (referenced herein as “voluntary western traffic lanes.”). The new voluntary western traffic lanes are not approved by the IMO, nor are they approved by any U.S. federal authority, including the U.S. Coast Guard. The LA/LB HSC developed these lanes as a voluntary measure to promote vessel safety. The Coast Guard is taking separate action to study the increased traffic in this area.

The geographical coordinates for the voluntary western traffic lanes are published by the LA/LB HSC secretary at <http://www.mxsocial.org/Blogs/24/Voluntary-Routing-Zones.aspx>.

Pacific Missile Test Range, Point Magu

Departing the IMO approved TSS and transiting south of the Channel Islands may result in delays and diversions, as this transit will take vessels through the Pacific Missile Test Range, Point Mugu, California. **The U.S. Navy advises that hazardous operations may take place within the test range.** The test range extends for 180 miles in a South West direction from Point Mugu and is up to 210 miles wide. The specific hazardous areas within the range are broadcast by the Navy daily Monday through Friday at 0900 and 1200 on 2638 kHz and 2738 kHz. When notified by the Navy, the Coast Guard also broadcasts this information on VHF-FM channel 16.

When transiting south of the Channel Islands (inbound or outbound to the Ports of Los Angeles and Long Beach), all mariners should communicate with Navy PLEAD CONTROL in a timely manner so that early decisions can be made regarding safe routing. Every effort should be made to comply fully with any instructions received from the Navy. For information regarding the status of current hazardous operations contact “PLEAD CONTROL” on VHF Marine channel 11 or 16, or at (805) 989-8841/8843 from 0600-1800, and at (805) 816-0792 after 1800. If you are unable to contact “PLEAD CONTROL”, contact “SAN PEDRO TRAFFIC” on VHF-FM channel 14 or (310) 832 6411 for the most recent information regarding hazardous military operations.

The Navy requests all vessels transiting the range to submit a notification to PLEAD CONTROL indicating the vessel name, destination, and estimated time of entry into, and departure from, the test range. Notifications can be faxed to (805) 989-0102.

Whales

Mariners are further reminded that large whales, including Blue, Grey, Humpback, and Fin whales, as well as other marine mammals, have been sighted in and around the Santa Barbara Channel, both within the TSS as well as to the south of the Channel Islands. These whales are all protected under federal law and some are listed as endangered species. Please report any collisions with whales or any observed live, injured, or dead whales, including time and position, to the National Oceanographic and Atmospheric Administration (NOAA) at 877-SOS-WHALE (877-767-9425) or the Coast Guard.

Recreational and Fishing Vessels

The area to the south of the Channel Islands is also used by both commercial fishing vessels and recreational vessels, whose operators may not be aware of the new voluntary western traffic lanes or that ship traffic has recently increased in this area. Since the new voluntary western traffic lanes are not an IMO approved traffic separation scheme, the International Regulations for Avoiding Collisions at Sea (COLREGS) Rule 10 does not apply.

Questions

Questions relating to the voluntary western traffic lanes should be directed to the LA/LB HSC Secretary at (310) 832-6411.

**U.S. COAST GUARD
REPORT OF DELAY AT DRAWBRIDGE
PER 33 CFR 117.5**

BRIDGE NAME _____ DATE _____

MILE _____ WATERWAY _____

1. Name/ Type of Vessel _____ Direction of Travel _____

2. Vessel Owner (Name) _____

(Address) _____

3. Name of Pilot (if applicable) _____

(Address) _____

4. Time vessel signaled for bridge opening _____

5. Location of vessel when signal was given _____

6. Time and location of vessel when delay began _____

7. Method of signal for bridge opening () Radio () Sound () Visual

(If sound or visual signal was used, specify _____)

8. Time bridge operator acknowledged signal _____

9. Method of bridge operator acknowledgement () Radio () Sound () Visual

(If sound or visual signal was used, specify _____)

10. Did bridge operator acknowledgement indicate the bridge

() Could be opened immediately

() Could not be opened immediately

11. If land traffic crossed the bridge:

Time land traffic started across the bridge _____

Time land traffic stopped crossing the bridge _____

Did land traffic stop on the bridge? _____

Duration land traffic stopped on the bridge _____

12. Time drawbridge opened for navigation _____

14. Additional comments _____

I certify the above information is true to the best of my knowledge and understand this statement may be used by the U.S. Coast Guard in levying fines against the bridge owner.

Signature _____

Telephone _____

Mariners may complete and send via fax or mail to:

USCG D11(dpw) Bridge Administration

Building 50-2

Coast Guard Island

Alameda, CA 94501-5100

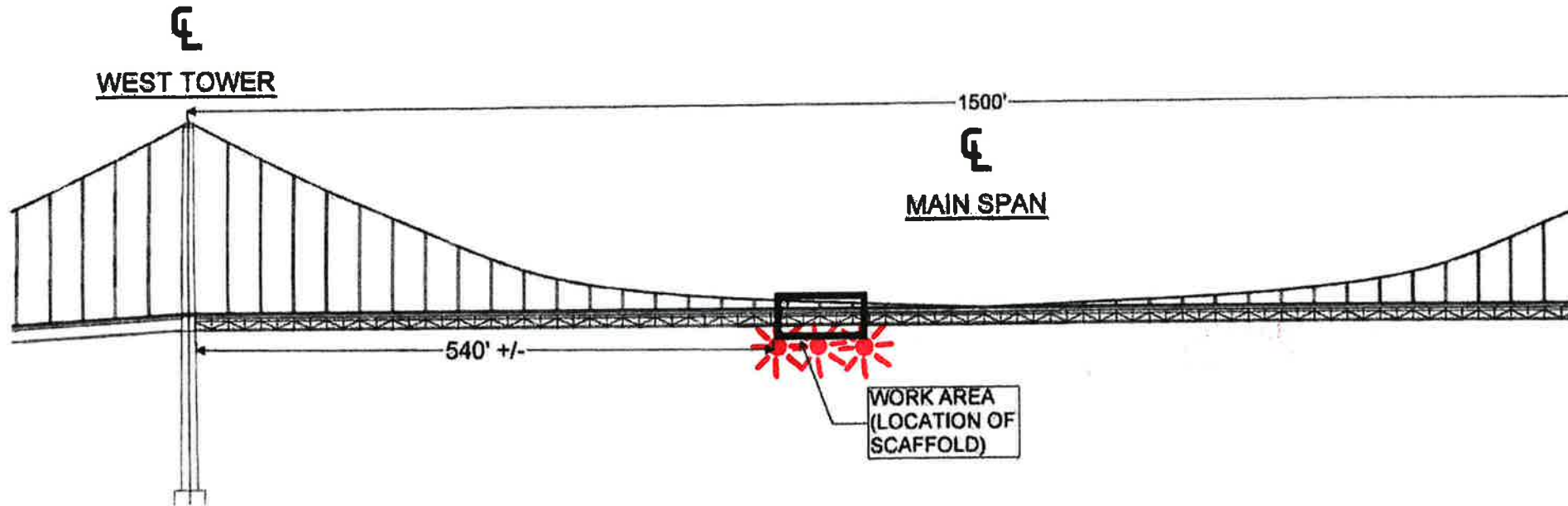
Cellular: (510) 219-4366, Work Phone: (510) 437-3516

Work Fax: (510) 437-5836

Mariners are reminded not to require bridge openings for appurtenances nonessential to navigation, per 33 CFR 117.11

SCAFFOLDING LIGHTING

Traveler Maintenance Rail Repairs Vincent Thomas Bridge



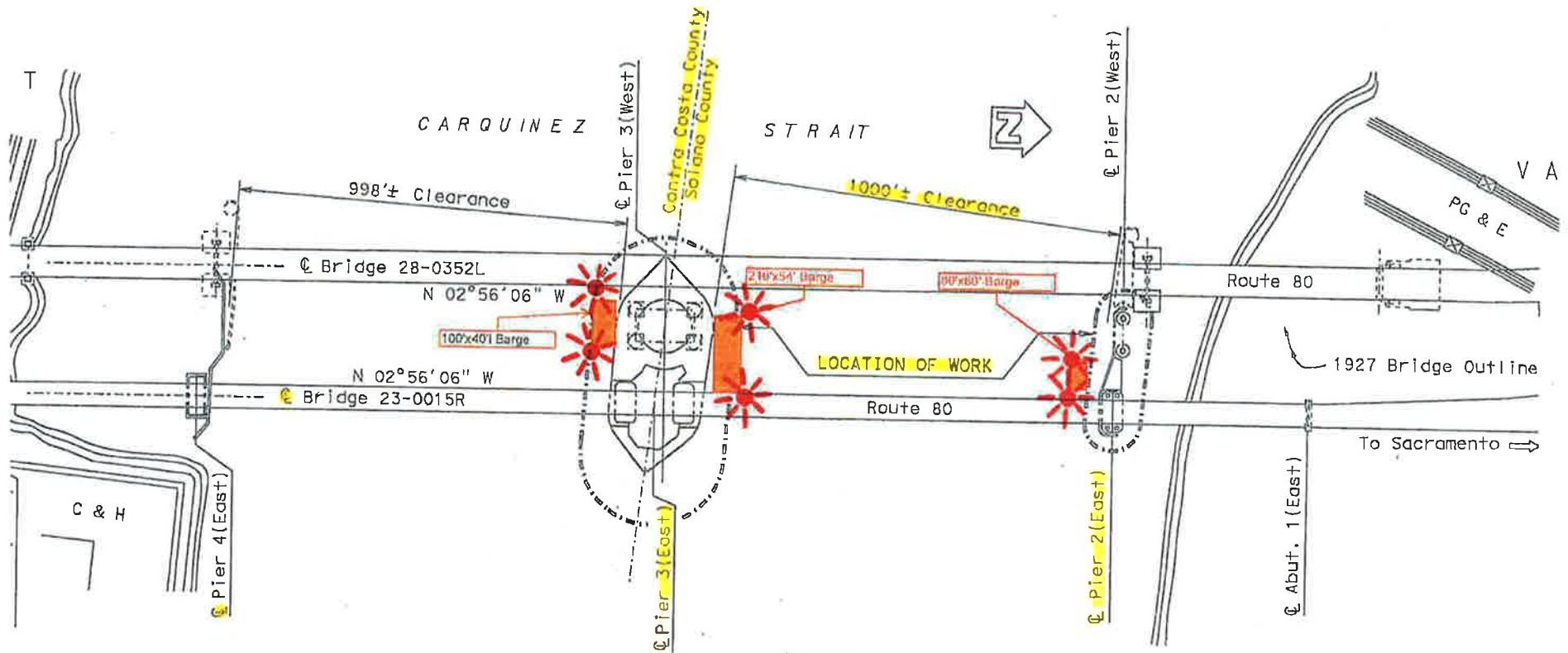
Each corner and the upstream and downstream center of the scaffold shall be lighted at night, and in periods of reduced visibility, with steady burning, all-round red lights, so as to be visible at 2,000 yards by approaching vessels. The red lights shall be mounted below low steel of the scaffold.

BARGE LIGHTING DIAGRAM

Fender Replacement Project

I-80 Hwy Bridge, mile 0.2, Carquinez Strait

The channel-ward corners of each barge shall be lit at night with steady burning red lights, visible at 2,000 yards by approaching vessels.



PLAN
1:200

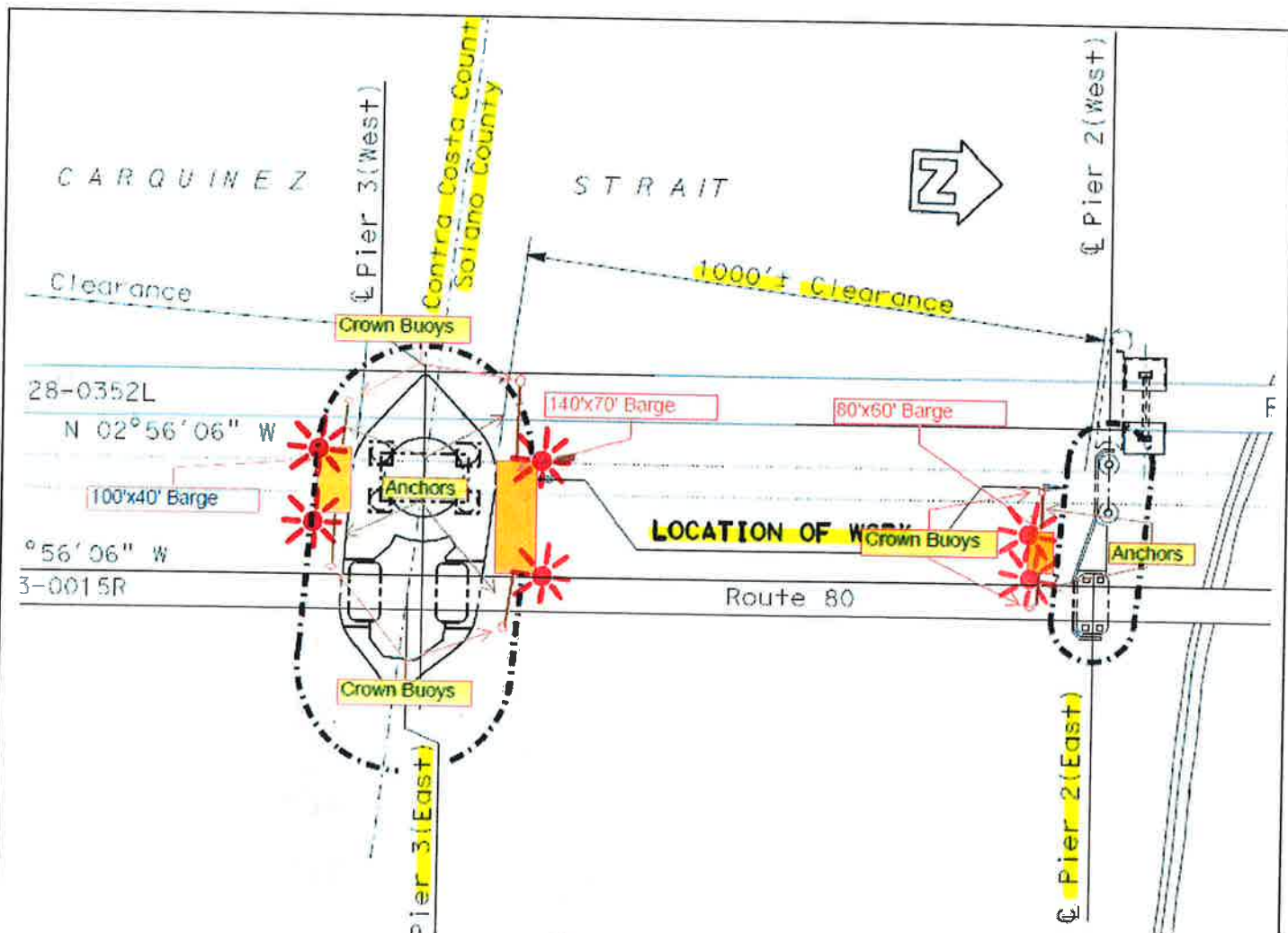
LEGEND:

C & H C & H Pure Cane Sugar

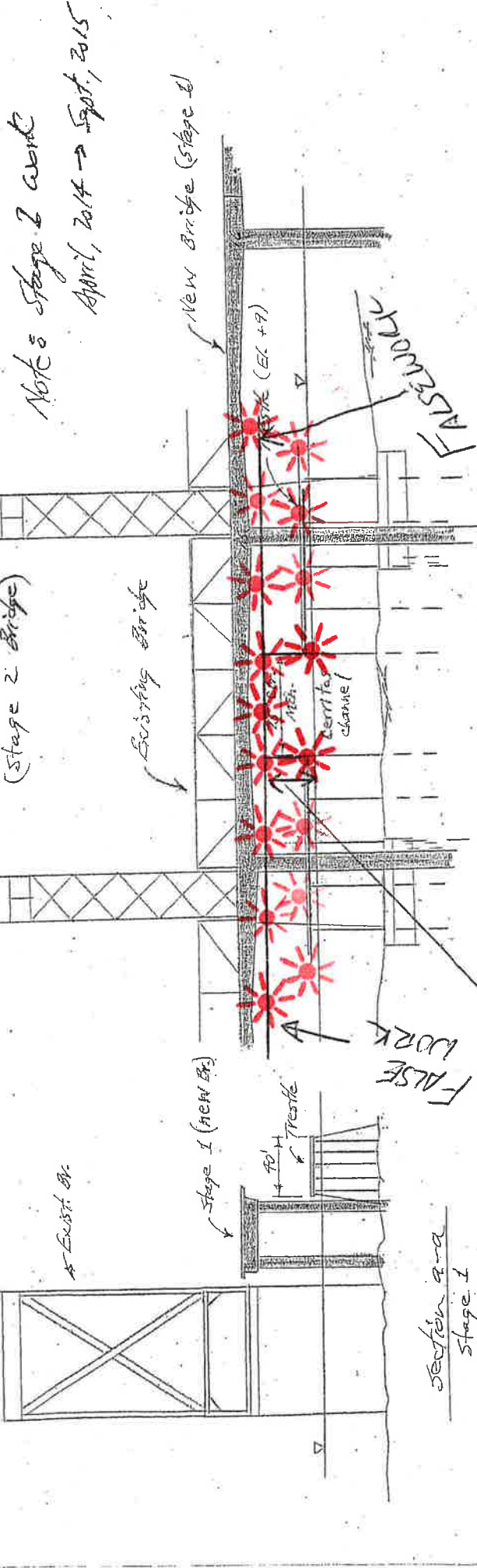
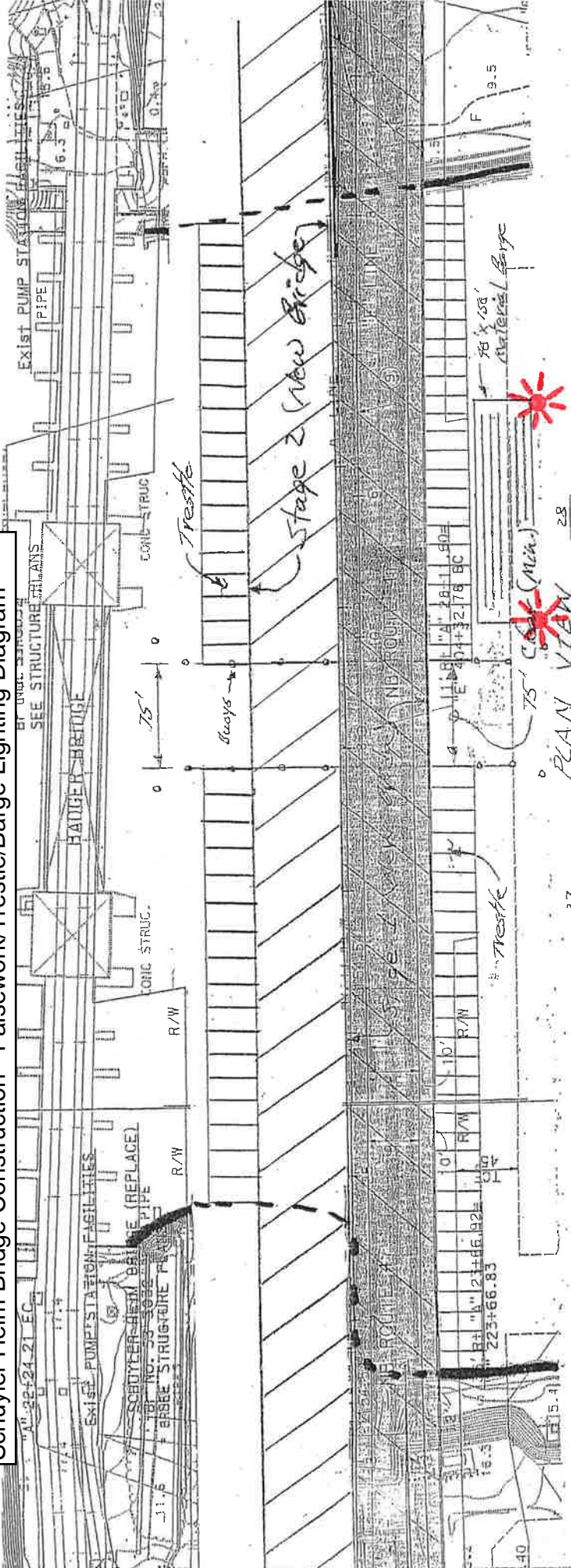
Barge Anchoring Plan

I-80 Highway Bridge Fender Rehabilitation Project

Barges may be anchored during work. Each anchor line projects east and west for 100 feet from the barges, parallel to the fenders. Each anchor is marked with an anchor (crown) buoy, lighted at night with a steady burning all-round white light seen at 2000 yards by approaching vessels.



Schuyler Heim Bridge Construction - Falsework/Trestle/Barge Lighting Diagram



Note: Stage 2 work
April, 2014 → Sept, 2015

The upstream and downstream sides of the trestle and falsework shall be lighted, at night, with steady burning all round red lights, spaced 25 feet apart.

43' VERTICAL CLEARANCE @ MEAN HIGH WATER

Each outboard corner of the moored barge shall be lighted at night with steady burning all round red lights.

Section a-a
Stage 1 shown

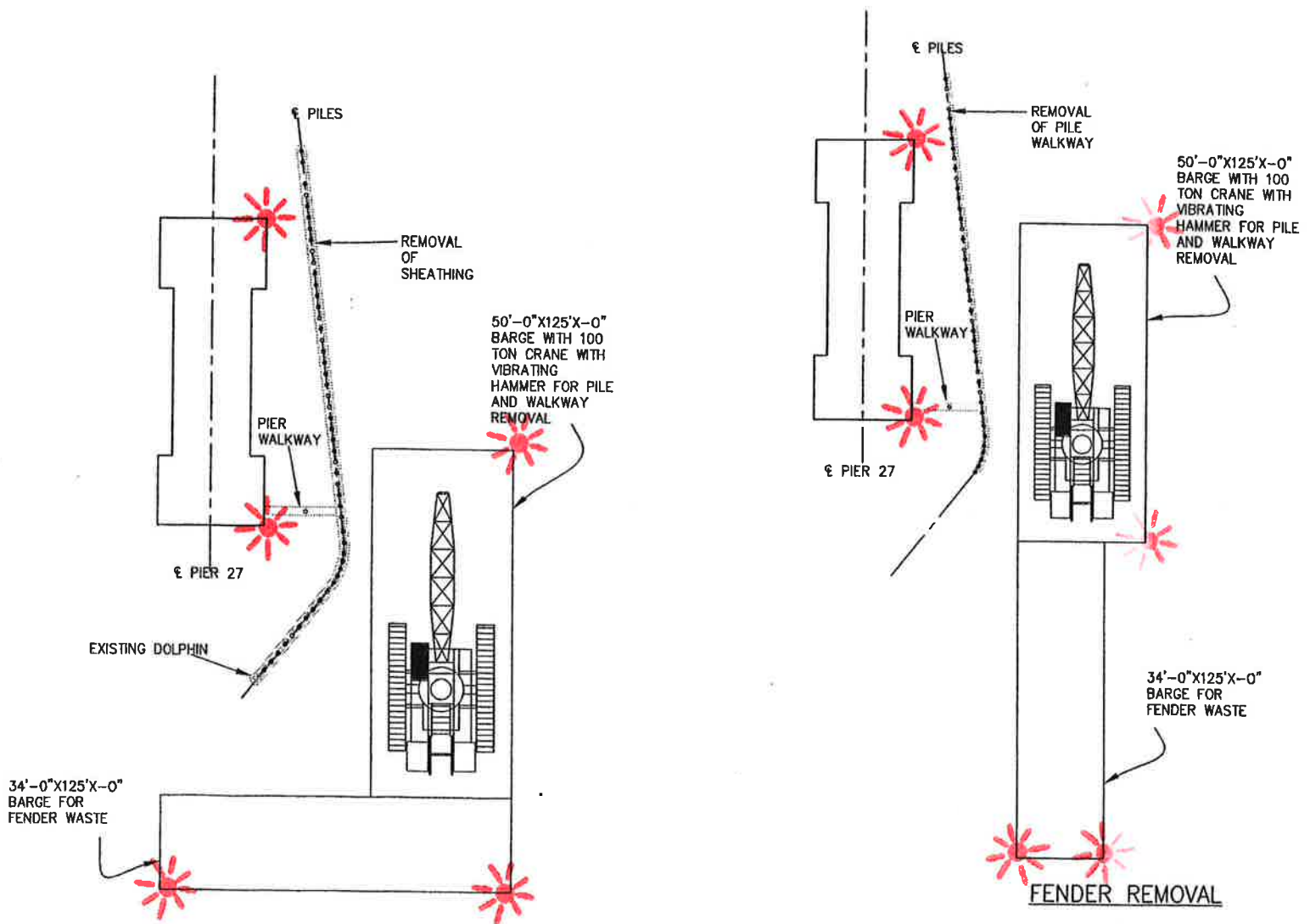
ELEVATION VIEW
Stage 1 shown

BARGE/PIER LIGHTING DIAGRAM

COMMODORE SCHUYLER HEIM REPLACEMENT PROJECT

MILE 4.9, CERRITOS CHANNEL

The channel-ward corners of each barge and the upstream and downstream channel-ward ends of each exposed bridge pier shall be lighted at night with steady burning red lights, visible at 1,500 yards by approaching vessels. The lights on the exposed bridge piers shall be mounted at least 1 foot above the 100 year flood mark.



NOTIFICATION OF VESSEL OPERATIONS

Date: November 27, 2012

To: U.S. Coast Guard, Marine Safety Group

Attn: BM2 Guy Langman
1001 Seaside Ave., Bldg 20
San Pedro, CA 90731
(310) 521-3867

From: LA Deepening Constructors

772 Tuna Street
San Pedro, CA 9023
(310) 521-1300 Phone
(310) 833-5657 Fax

COMMENTS:

The tugboat Arapaho and the scows Eastport and Northport will continue transporting surcharge material from the Southwest Slip to the Cabrillo Shallow Water Habitat today. The tugboat Arapaho will tow hopper barges from the Southwest Slip to the Cabrillo Shallow Water Habitat Construction Zone frequently during this operation. The assist boat Pono will be working at Southwest Slip assisting with barge loading operations. Work will be performed from 0600 hours to 2030 hours today.

The Cabrillo Shallow Water Habitat submerged fill site is under construction to an elevation of -15' MLLW. During construction elevations as high as -11' MLLW can be encountered at the Cabrillo Shallow Water Habitat. There are mooring cans and day markers in the Cabrillo Shallow Water Habitat that can pose obstacles for vessels. The location of mooring cans and day markers are shown on Figure 6. Use caution when navigating.

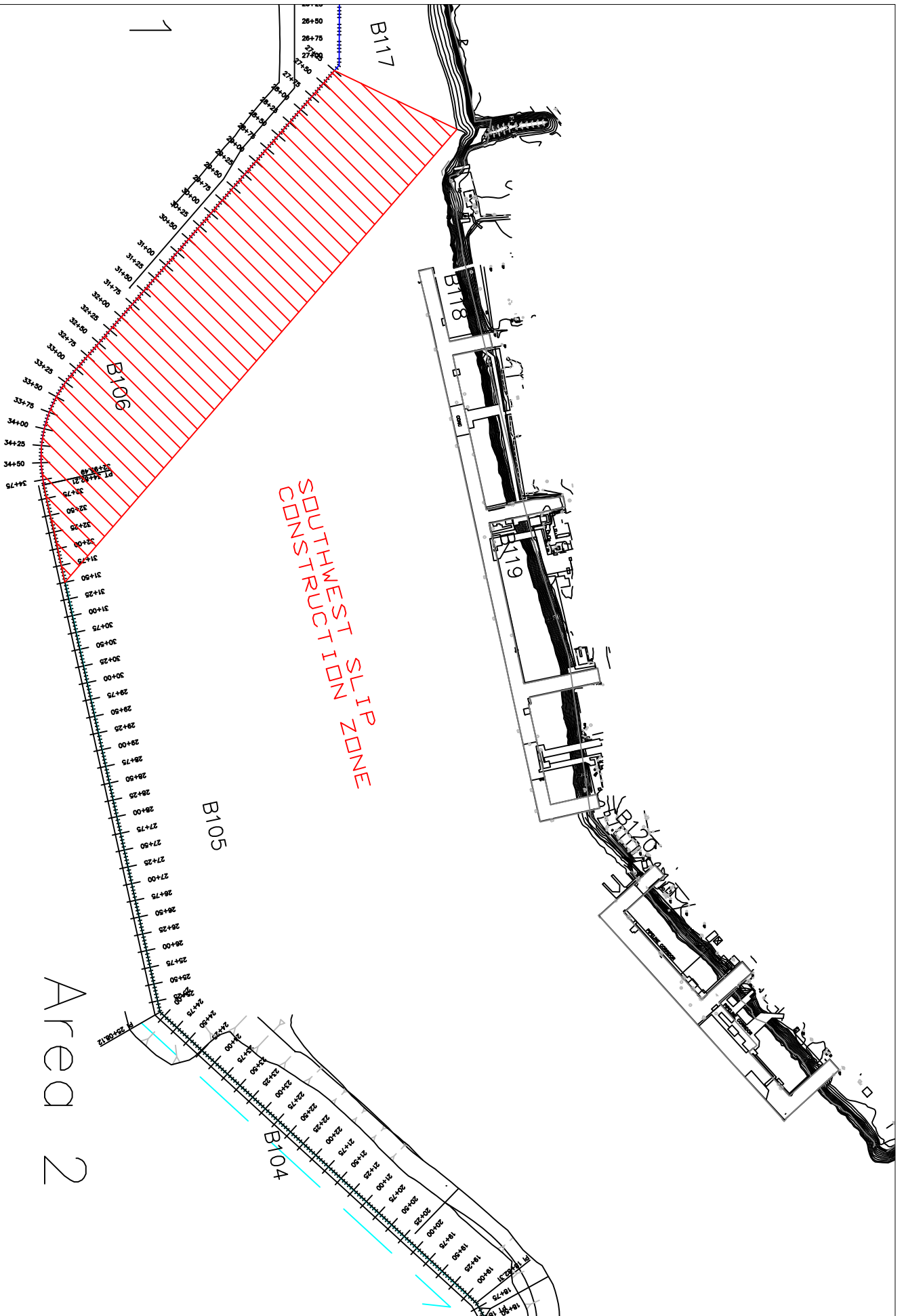
The rigs use channels 65 and 67 and monitor channel 13. See attached Figure 13 of Southwest Slip and Figure 6 of Cabrillo Shallow Water Habitat.

For questions, please call Randy Maddox at (206) 303-7186.

The following contacts may be called in case of emergency:

Randy Maddox,	Project Manager	(206) 303-7186
Jim Davis,	Project Engineer	(562) 822-1367
Jesse Banuelos,	Field Engineer	(562) 685-3877

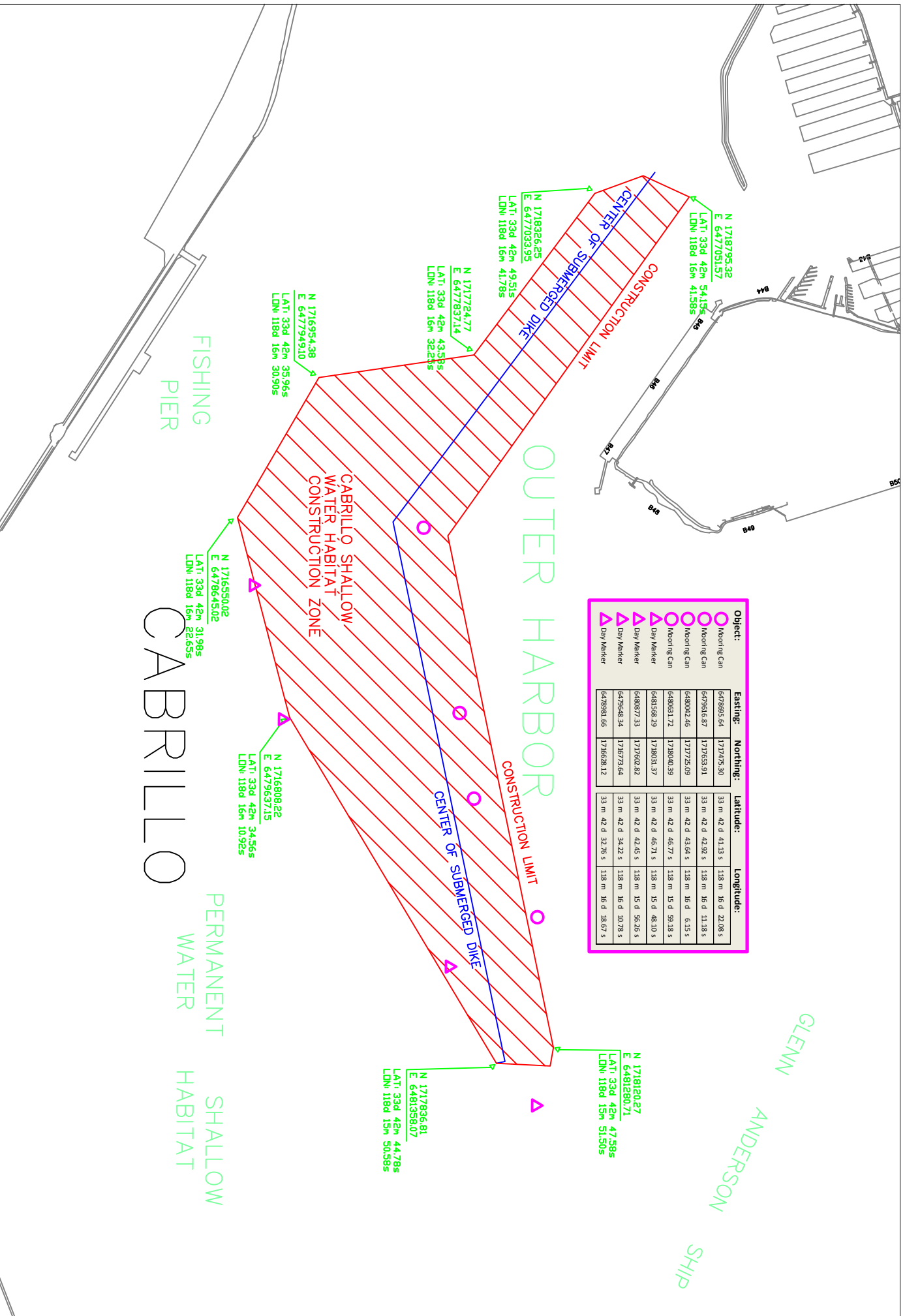
Our Nation is still at war. Report suspicious activity to the National Response Center
1-800-424-8802 or USCG MARINE TERMINAL SECURITY **703-313-5800**



Location: Los Angeles, CA
 Sheet: 1 of 1
 Prepared By: Kris Ahrens

Figure 13:
 Southwest Slip Construction Zone

Object:	Easting:	Northing:	Latitude:	Longitude:
Mooring Can	647895.64	171775.30	33 m 42 d 41.13 s	118 m 16 d 22.08 s
Mooring Can	647916.87	171765.91	33 m 42 d 42.92 s	118 m 16 d 11.18 s
Mooring Can	648002.46	1717725.09	33 m 42 d 43.64 s	118 m 16 d 6.15 s
Mooring Can	648031.72	1718940.39	33 m 42 d 46.77 s	118 m 15 d 59.18 s
Day Marker	648158.29	1718031.37	33 m 42 d 46.71 s	118 m 15 d 48.10 s
Day Marker	648877.33	171602.82	33 m 42 d 42.45 s	118 m 15 d 56.26 s
Day Marker	647968.34	171673.64	33 m 42 d 34.22 s	118 m 16 d 10.78 s
Day Marker	6478981.66	1716628.12	33 m 42 d 32.76 s	118 m 16 d 18.67 s



Location: Los Angeles, CA
 Sheet: 1 of 1
 Prepared By: J Banuelos

Figure 6: Cabrillo Shallow Water Habitat
 Note: Mooring can & day marker positions are represented by magenta symbols.

L.A. DEEPENING CONSTRUCTORS, INC. J.V.

772 TOWA STREET TERMINAL ISLAND, CA 90733 PHONE: 310.551.1300 FAX: 310.551.1887