



U.S. Department  
of Homeland Security  
**United States  
Coast Guard**

---

## LOCAL NOTICE TO MARINERS

**District: 11**

**Week: 52/11**

SEND CORRESPONDENCE TO:  
COMMANDER  
DISTRICT ELEVEN (DPW)  
COAST GUARD ISLAND BUILDING 50-2  
ALAMEDA, CA 94501-5100

BROADCAST NOTICE TO MARINERS - Information concerning aids to navigation and waterway management promulgated by BNM 0823-11 to BNM 0830-11 has been incorporated in this notice if still significant.

---

### SECTION I - SPECIAL NOTICES

This section contains information of special concern to the Mariner.

---

#### SUBMITTING INFORMATION FOR PUBLICATION IN THE LOCAL NOTICE TO MARINERS

A complete set of guidelines with examples and contact information can be found at <http://www.uscg.mil/D11/DP/LnmRequest.asp> or call BMC Luis S. Zepeda at 510-437-2986 or e-mail [D11LNM@uscg.mil](mailto:D11LNM@uscg.mil). Please provide all Local Notice to Mariners submissions 14 days prior to the start of operations.

#### BRIDGE INFORMATION-DISCREPANCIES AND CORRECTIONS

For bridge related issues during normal working hours Monday through Friday, contact the Coast Guard Eleventh District Bridge Section, Coast Guard Island, Building 50-2, Alameda, CA 94501-5100, telephone: 510-437-3516 Office; 510-219-4366 Cell. For emergencies or discrepancies during nights, weekends and holidays, immediately notify the nearest Coast Guard Sector Command via VHF-FM chan. 16 or via telephone: San Diego & Colorado River 619-278-7031, Los Angeles 310-521-3800, San Francisco 415-399-7300, Eureka 707-839-6100. Flotsam may accumulate on and near bridge piers and abutments. Mariners should approach all bridges with caution.

\*To REPORT A DELAY AT A DRAWBRIDGE A report form is included in the Enclosures section of this Local Notice to Mariners.\*

#### DGPS

For information regarding the DGPS system, or to report GPS, DGPS, or AIS problems, mariners are advised to contact: <http://www.navcen.uscg.gov>, email: [nisws@navcen.uscg.gov](mailto:nisws@navcen.uscg.gov), or the USCG Navigation Center at 703-313-5900.

#### ELECTRONIC NAVIGATION CHARTS

"RANGE STRUCTURES: The U.S. Coast Guard has become aware that Coast Guard information used to depict a range line on NOAA Electronic Navigational Charts (ENC) may not be of sufficient accuracy to accurately portray the range line on the ENC. Mariners are cautioned that the position of a range line as shown on an ENC may not reflect its true position."

LNM: 03/11

#### SOUTHERN CALIFORNIA-MARINE SAFETY INFORMATION BULLETIN

There has been a recent trend in traffic patterns where some vessel operators are choosing to depart the Traffic Separation Scheme (TSS) established in the Santa Barbara Channel and transit through an area to the south of San Miguel, Santa Rosa and Santa Cruz Islands (referenced herein as "south of the Channel Islands"). As such, the Los Angeles / Long Beach Harbor Safety Committee has published voluntary western traffic lanes for vessels approaching and departing the Ports of Los Angeles and Long Beach.

Mariners transiting through the western and northern approaches to and from the Ports of Los Angeles and Long Beach (LA/LB) are advised the established TSS through the Santa Barbara Channel as shown on NOAA and Admiralty charts is the only International Maritime Organization (IMO) approved routing measure in this area. An IMO approved TSS reduces the risk of collision by providing for the separation of arriving and departing traffic and minimizing potentially hazardous crossing situations. Mariners, who have traditionally used this approved TSS, are encouraged to continue to do so.

For additional information please see the Enclosures Section.

**U.S. COAST GUARD PRECAUTIONARY TRANSIT NOTIFICATION VICINITY OF FUKUSHIMA, JAPAN**

In response to the situation at the Fukushima Nuclear Power Plant in Japan, the U.S. Coast Guard recommends, as a precaution, that vessels avoid transiting within 20 kilometers/10.8 nautical miles of the Fukushima Nuclear Power Plant (37°25.5'N, 141°02.0'E).

Mariners are advised that this recommendation should be considered a minimum distance. Prudent route planning should incorporate prevailing and changing wind and weather conditions, in addition to the other precautionary measures.

In the event a vessel bound for a U.S. port transits within 20 kilometers/10.8 nautical miles of the Fukushima Nuclear Power Plant (37°25.5'N, 141°02.0'E) cautionary area, the U.S. Coast Guard requires the vessel's master to submit transit information, including the date and total time within the 20 kilometers/10.8 nautical miles cautionary area, to the cognizant U.S. Coast Guard Captain of the Port using the comment block in the routine submittal of their 96-hour Advanced Notice of Arrival.

The U.S. Coast Guard will provide an updated notice as additional guidance becomes available. Mariners should keep abreast of information being provided by the government of Japan relating to any further potential impacts.

LNM: 23/11

**SECTION II - DISCREPANCIES**

This section lists all reported and corrected discrepancies related to Aids to Navigation in this edition. A discrepancy is a change in the status of an aid to navigation that differs from what is published or charted.

**DISCREPANCIES (FEDERAL AIDS)**

LLNR	Aid Name	Status	Chart No.	BNM Ref.	LNM St	LNM End
185	Anacapa Island Light	LT EXT/SS INOP	18729	0769-11	48/11	
5215	Redwood Creek Light 10	TRLB/STRUCT DEST/DBN DMGD	18651	0642-11	41/11	
<b>5410</b>	<b>San Francisco Bay North Channel Lighted Buoy A</b>	<b>REDUCED INT</b>	<b>18649</b>	<b>0830-11</b>	<b>52/11</b>	
7840	Bodega Harbor Channel Daybeacon 13	TRLB/STRUCT DEST	18643	0415-11	27/11	
<b>8025</b>	<b>Tomaes Bay Outside Bar Gong Buoy TB</b>	<b>SS IMCH</b>	<b>18643</b>	<b>0829-11</b>	<b>52/11</b>	

**DISCREPANCIES (FEDERAL AIDS) CORRECTED**

LLNR	Aid Name	Status	Chart No.	BNM Ref.	LNM St	LNM End
5	Point Loma Light	WATCHING PROPERLY	18773	0824-11	51/11	52/11
1875	Glorietta Bay Channel Range Front Light	WATCHING PROPERLY	18773	0820-11	51/11	52/11
3170	Los Angeles East Basin Channel Light 2	WATCHING PROPERLY	18751	0826-11	52/11	52/11
4325	Alcatraz North Fog Signal	WATCHING PROPERLY	18650	0827-11	52/11	52/11

**DISCREPANCIES (PRIVATE AIDS)**

LLNR	Aid Name	Status	Chart No.	BNM Ref.	LNM St	LNM End
3187.1	Los Angeles Outer Harbor Light D	LT EXT	18751		50/11	
4115	Santa Cruz Municipal Wharf Signal	SS INOP	18685	0695-11	43/11	
5155	San Mateo-Hayward Bridge Fog Signal	SS INOP	18651	0654-11	42/11	

**DISCREPANCIES (PRIVATE AIDS) CORRECTED**

LLNR	Aid Name	Status	Chart No.	BNM Ref.	LNM St	LNM End
------	----------	--------	-----------	----------	--------	---------

None

**PLATFORM DISCREPANCIES**

Name	Status	Position	BNM Ref.	LNM St	LNM End
None					

**PLATFORM DISCREPANCIES CORRECTED**

Name	Status	Position	BNM Ref.	LNM St	LNM End
None					

**SECTION III - TEMPORARY CHANGES and TEMPORARY CHANGES CORRECTED**

This section contains temporary changes and corrections to Aids to Navigation for this edition. When charted aids are temporarily relocated for dredging, testing, evaluation, or marking an obstruction, a temporary correction shall be listed in Section IV giving the new position.

**TEMPORARY CHANGES**

LLNR	Aid Name	Status	Chart No.	BNM Ref.	LNM St	LNM End
203	Platform Harvest Light	DISCONTINUED	18721	0774-11	48/11	
300	Santa Cruz West Breakwater Light	Reduced Intensity	18685	0628-11	40/11	
4085	Santa Cruz West Breakwater Light	Reduced Intensity	18685	0628-11	40/11	

**TEMPORARY CHANGES CORRECTED**

LLNR	Aid Name	Status	Chart No.	BNM Ref.	LNM St	LNM End
None						

None

**PLATFORM TEMPORARY CHANGES**

Name	Status	Position	BNM Ref.	LNM St	LNM End
None					

None

**PLATFORM TEMPORARY CHANGES CORRECTED**

Name	Status	Position	BNM Ref.	LNM St	LNM End
None					

None

**SECTION IV - CHART CORRECTIONS**

This section contains corrections to federally and privately maintained Aids to Navigation, as well as NOS corrections.

This section contains corrective actions affecting chart(s). Corrections appear numerically by chart number, and pertain to that chart only. It is up to the mariner to decide which chart(s) are to be corrected. The following example explains individual elements of a typical chart correction.

Chart Number	Chart Edition	Edition Date	Last Local Notice to Mariners	Horizontal Datum Reference	Source of Correction	Current Local Notice to Mariners
12327	91st Ed.	19-APR-97	Last LNM: 26/97	NAD 83		27/97

Chart Title: NY-NJ-NEW YORK HARBOR - RARITAN RIVER

Main Panel 2245 NEW YORK HARBOR

CGD01

(Temp) ADD NATIONAL DOCK CHANNEL BUOY 3

at 40-41-09.001N 074-02-48.001W

Green can

Corrective Action Object of Corrective Action

Position

(Temp) indicates that the chart correction action is temporary in nature. Courses and bearings are given in degrees clockwise from 000 true.

Bearings of light sectors are toward the light from seaward. The nominal range of lights is expressed in nautical miles (NM) unless otherwise noted.

**18652 36th Ed. 01-FEB-11 Last LNM: 24/09 NAD 83 52/11**

Chart Title: San Francisco Bay to Antioch

Inset 1832 SAN FRANCISCO BAY TO ANTIOCH. Page/Side: b

CHANGE	Depth Legend - Southampton Shoal Channel to:; 43 FT SEP 2011 (NOS NW-21148)	NOS 37-54-34.000N	122-25-21.000W
CHANGE	Depth Note - Richmond Harbor to:; RICHMOND HARBOR CHANNEL	NOS 37-55-10.000N	122-18-54.000W

DEPTHS Controlling depths for project widths in feet at MLLW: Sep 2009  
- Nov 2011 Entrance Channel 34 Point Potrero Reach 34 Point Potrero  
Turn 34 Harbor Channel 36 Santa Fe Channel 26 Turning Basin 21 (NOS  
NW-21148)

**Main Panel 1828 SAN FRANCISCO BAY TO ANTIOCH. Page/Side: a**

CHANGE Depth Legend - Southampton Shoal Channel to:; 43 FT SEP 2011 (NOS NOS 37-54-34.000N 122-25-21.000W  
NW-21148)

**Main Panel 1833 SAN FRANCISCO BAY TO SAN PABLO BAY. Page/Side: a**

CHANGE Depth Legend - Southampton Shoal Channel to:; 43 FT SEP 2011 (NOS NOS 37-54-34.000N 122-25-21.000W  
NW-21148)

---

---

**SECTION V - ADVANCE NOTICES**

This section contains advance notice of approved projects, changes to aids to navigation, or upcoming temporary changes such as dredging, etc.  
Mariners are advised to use caution while transiting these areas.

SUMMARY OF ADVANCED APPROVED PROJECTS

Approved Project(s) Project Date Ref. LNM  
None

Advance Notice(s)  
None

---

---

**SECTION VI - PROPOSED CHANGES**

Periodically, the Coast Guard evaluates its system of aids to navigation to determine whether the conditions for which the aids to navigation were  
established have changed. When changes occur, the feasibility of improving, relocating, replacing, or discontinuing aids are considered. This section  
contains notice(s) of non-approved, proposed projects open for comment. SPECIAL NOTE: Mariners are requested to respond in writing to the District  
office unless otherwise noted (see banner page for address).

PROPOSED WATERWAY PROJECTS OPEN FOR PUBLIC COMMENT

Proposed Project(s) Closing Docket No. Ref. LNM  
None

Proposed Change Notice(s)

**CALIFORNIA LIGHT DISCONTINUANCE**

The U.S. Coast Guard is proposing to discontinue the emergency light at Point Arena Light (LLNR 420). Direct any questions, comments, or  
feedback no later than 17 January 2012 to LT Melissa Smith at 510-437-5984 or Melissa.A.Smith@uscg.mil

Chart 18640

LNM: 50/11

**CALIFORNIA-LIGHT DISCONTINUANCE**

The U.S. Coast Guard is proposing to discontinue Platform Harvest Light (LLNR-203). Direct any questions, comments, or feedback no later than  
December 30, 2011 to LT Melissa Smith at 510-437-5984 or Melissa.A.Smith@uscg.mil

Charts: 18020 18022 18700 18720 18721

LNM: 48/11

---

---

**SECTION VII - GENERAL**

This section contains information of general concern to the Mariners. Mariners are advised to use caution while transiting these areas.

**ARIZONA-BRIDGE-COLORADO RIVER Current 20 Dec 2011**

OXBOW BRIDGE (river mile 100.1) - A work platform is suspended from low steel of the bridge for bridge rehabilitation project through Jan 2012.  
Navigational clearances for the main channel are not affected but at other sections of the bridge, the vertical clearance is reduced by 8 feet. The  
work platform is lighted at night with red lights.

LNM: 38/11

**ARIZONA-BRIDGE-COLORADO RIVER Current 20 Dec 11**

Highway 62 Bridge at Parker, AZ.-Temporary trestles installed upstream and downstream for the replacement of the bridge, provide 10 feet  
vertical clearance above High Water and 50 feet horizontal clearance at the main navigational channel span only. At night, the trestle piles are  
marked with red lights and the main channel span is marked with a center range of 2 green lights. Cable cross bracing may be present in all spans  
except the main channel span. Cables are marked with multi-colored flags. Orange buoys have been installed along the length of the trestles

**ARIZONA-BRIDGE-COLORADO RIVER Current 20 Dec 11**

leaving an opening for vessels to pass through the main navigational channel span. Mariners are advised to use the main channel span only. No wake is requested through the project site. The bridge replacement project will be in progress through Dec 2013.

LNM: 18/11

**CALIFORNIA-BRIDGE-OAKLAND INNER HARBOR TIDAL CANAL Current 20 Dec 11**

Alameda County is performing seismic retrofit work to the underground counter weight for the Fruitvale Avenue highway drawbridge. As previously coordinated with waterway users, the drawspan will be secured closed to navigation on the following dates:

1201 am. January 3, until 1159 pm. January 13, 2012.

1201 am. January 23, until 1159 pm. February 3, 2012.

The drawspan will be promptly returned to normal operation all other times and at the conclusion of the project.

Chart 18650

LNM: 48/11

**NORTHERN CALIFORNIA-BRIDGE-CARQUINEZ STRAIT CURRENT 20 Dec 11**

I-80 CARQUINEZ STRAIT SUSPENSION HWY BRIDGE- Caltrans is painting the bridge using the rolling traveller attached to the underside of the bridge from 0630 until 1500, Monday through Friday, through 1 May 2012. The 30 foot wide traveller reduces vertical clearance at the suspension bridge by 13 feet and is lighted at night with red lights. The traveller will be stored at the north channel pier or aligned with the center channel pier of the upstream bridge when not in use. Mariners may contact Caltrans via telephone at 510-715-7151 if additional information is needed.

Chart 18655

LNM: 43/11

**NORTHERN CALIFORNIA-BRIDGE-CARQUINEZ STRAIT Current 20 Dec 11**

The BENICIA-MARTINEZ Drawbridge fendering on the south side draw span has been damaged and may not provide adequate protection for the drawbridge. Mariners are advised to avoid contact with the fender.

Chart 18656

LNM: 37/11

**NORTHERN CALIFORNIA-BRIDGE-MARE ISLAND/NAPA RIVER Current 20 Dec 11**

The Mare Island Drawbridge is undergoing deck replacement until 02 FEB 12. During daylight hours, mariners are requested to contact the drawbridge operator at least 15 minutes prior to arrival to allow construction crews to clear the drawspan.

Chart 18655

LNM: 44/11

**NORTHERN CALIFORNIA-BRIDGE-MIDDLE RIVER Current 20 Dec 11**

STATE ROUTE 4 HIGHWAY BRIDGE- Caltrans will use scaffolding and containment platform for a painting project, reducing vertical clearance by no more than 5 ft, through 20 Apr 12. During the project approximately half of the width of the waterway will be unobstructed. Scaffolding and containment will be lighted at night with red lights.

Chart 18661

LNM: 36/11

**NORTHERN CALIFORNIA-BRIDGE-SACRAMENTO RIVER PROPOSED DRAWBRIDGE REGULATION CHANGE: (Advance Notice of Proposed Rulemaking)**

The Coast Guard will be seeking comments and information on how best to address a proposal to change the operating regulation for the Freeport Drawbridge, mile 46.0, over the Sacramento River. The bridge owner has proposed to change the summer time "on demand" bridge opening hours from between 6 a.m. and 10 p.m., to between 9 a.m. and 5 p.m.; and to extend the annual winter operating schedule to include the month of October, due to a documented decrease in drawbridge openings compared to other nearby bridges. An "Advance Notice of Proposed Rulemaking" will appear in the Federal Register within the next month, providing a 60 day comment period and information on how to provide comments. Updates to the status of the proposal and the comment period will be provided weekly in the Coast Guard Local Notice to Mariners.

Chart 18662

LNM: 51/11

**NORTHERN CALIFORNIA-BRIDGE-SAN FRANCISCO BAY, ISLAIS CREEK**

THE THIRD STREET DRAWBRIDGE-The drawbridge is secured in the closed-to-navigation position, due to emergency electrical repairs, from 18 Dec 11 until 31 Jan 12. The bridge provides 4 feet of vertical clearance at Mean High Water when closed. Mariners able to transit the bridge, while in the closed-to-navigation position, may continue to do so. For conditions at the bridge mariners can contact the Coast Guard Bridge office at 510-437-3515 for further information.

Chart 18649

LNM: 51/11

**NORTHERN CALIFORNIA-BRIDGE-SAN FRANCISCO BAY-Current 22 Nov 11**

SAN FRANCISCO-OAKLAND BAY BRIDGE REPLACEMENT-EAST OF YERBA BUENA ISLAND (YBI)-Mariners are advised to avoid the construction area by using the main navigational channel west of YBI or the alternate channel, piers I-J (existing bridge) and piers E-3 E-4 (3rd and 4th piers east of YBI, new bridge), east of the construction site. Clearances for alternate channel are; 442 feet of horizontal clearance and 112 feet of vertical clearance at Mean High Water. Mariners transiting the area should proceed with caution to avoid creating unstable conditions for on-site workers. Temporary falsework is now in place and is lit at night with quick flashing red lights. See the Enclosure Section of this Local Notice to Mariners for the Alternate Channel Marking and falsework diagram. Mariners may contact American Bridge/Fluor VHF-FM Chan. 73, or by telephone at 510-759-1325 (American Bridge/Fluor), to determine conditions at the bridge. The green center span lights have been temporarily extinguished in the three spans east of the main channel span. A large crane barge and material barges are anchored approximately 350 feet ENE of the YBI shoreline. Anchor lines extend approximately 1500 ft north and south of the barges, anchor buoys are lighted at night with quick flashing white lights. A crane barge and associated material barges are anchored approximately 600 feet ENE of the YBI shoreline to assist in the construction of the overall bridge. Anchor lines extend approximately 800 feet north and south of the barges, anchor buoys are lighted at night with quick flashing white lights. Barges are lighted at night with steady burning red lights. See the Enclosure Section of this Local Notice to Mariners for the Barge Anchor Diagrams. For more details or comments contact the Eleventh Coast Guard District Bridge Office at 510-437-3461.

**NORTHERN CALIFORNIA-BRIDGE-SAN FRANCISCO BAY-Current 22 Nov 11**

Chart 18650

LNM: 50/05

**NORTHERN CALIFORNIA-BRIDGE-SAN FRANCISCO BAY-Current 27 Dec 11**

DUMBARTON HIGHWAY BRIDGE RETROFIT- A 20' X 40' barge, lighted at night with red lights, will be moored, Monday-Saturday, 0700 to 1700 local time, 2130 to 0600 and extended on Fridays from 2130 to 0900 at Piers 23 through 30 through 13 Jan 2012, to facilitate pier footing retrofit. The barge may be moored in the main ship channel, reducing horizontal clearance in the span by 20 feet, through 13 Jan 2012. The barge can be moved, for navigational safety, with one hour advance notice. For conditions at the bridge mariners can contact the Caltrans contractor, Shimmick at Dumbarton Bridge Retrofit, on marine radio VHF-FM Ch 14/16 or contact Ben Gordon 510-760-0152. For further information, contact the Coast Guard Bridge Office at 510-437-3515.

Chart 18651

LNM: 05/11

**NORTHERN CALIFORNIA-BRIDGE-SAN JOAQUIN RIVER Current 07 Nov 11**

BRADSHAW'S CROSSING BRIDGE-New bridge construction through Nov 2012. Temporary trestles upstream and downstream of the bridge construction site provide 100 feet of horizontal clearance at the center of the CHANNEL. Temporary falsework spans the river providing 20 feet of vertical clearance at Mean High Water. The temporary falsework/trestles are lit at night with steady burning red lights. (See lighting enclosure at the end of this LNM). No in-water equipment is planned. For more details or comments, contact the City of Lathrop at 209-992-0028 or RD 2062 at 209-495-2871. Mariners are urged to use caution while transiting the work site.

Chart 18661

LNM: 28/11

**NORTHERN CALIFORNIA-BRIDGE-SAN JOAQUIN RIVER-Current 19 Dec 11**

ANTIOCH HIGHWAY BRIDGE – The tugs Bay Cat or River Cat and a 110' X 30' barge, with a 60 ton crane, will be moored in the main ship channel, during daylight hours from 02-07 Jan 2012, to install cross bracing to falsework at bridge piers. No anchor lines are proposed at this time. The barge can be moved with 10 minutes notice for navigational safety. Mariners can contact the tug on VHF-FM Ch 16 and 14 to determine conditions at the bridge. 24-HR contact numbers; Caltrans 925-766-8261, California Engineering Contractors; 925-250-1298, 925-559-4119, 925-519-5197.

Chart 18661

LNM: 50/11

**NORTHERN CALIFORNIA-DREDGING-PORT OF REDWOOD CITY CHANNEL**

Vortex Marine Construction will conduct dredging operations until 31 Dec 11 at the Port of Redwood City Channel in San Mateo County. The project location begins at approximate position 37-33-14N, 122-11-52W and ends at approximate position 37-30-24N, 122-12-53W. Disposal will take place at SF-11 Alcatraz Disposal Site. D/B Vengeance will monitor VHF-FM Chan. 13, 14, and 16. Mariners are advised to transit the area with caution. For more details or comments contact Edwin Enriquez at 510-261-2400.

Chart 18662

LNM: 35/11

**NORTHERN CALIFORNIA-LOCK OPERATIONS-MONTEZUMA SLOUGH**

The California Department of Water Resources will operate the Salinity Control Structure located at: 38-05-36N, 121-53-07W, until 31 May 12. Flash boards are across the maintenance channel limiting vessel traffic to the boat lock. A lock operator is on duty every day through 31 May 12. The visual signal is a standard traffic light. Whistle signals to request opening are two prolonged blasts followed by two short blasts. VHF-FM chan. 13 is monitored. The boat lock is located on the east side on the channel and provides the following clearances: 16 feet wide, 70 feet long and 9 feet over the sill at MLLW, with no vertical impairment. A shoal area exists along the east bank, above and below the structure extending approx. 50 feet out from the existing levee. Marker buoys have been placed to identify the area. Mariners are advised that the Control Structure operations can at times create currents greater than in other areas of the slough. For more details or comments contact Sheryl Moore at 209-833-20820 or Rhett Cotter at 209-833-2077.

Chart 18652

LNM: 44/11

**NORTHERN CALIFORNIA-MARINE CONSTRUCTION-ROBERTS ISLAND**

Dutra will set and maintain conveyors to load marine barges until 30 Apr 12 at Roberts Island in position 37-58-51.2N 121-23-12.05W. Various tugs and barges will monitor VHF-FM Chan. 7, 13, 14 and 16. Mariners are requested to transit the area with caution. For more details or comments contact Scott Brooks at 707-333-5029 or Chuck Walker at 707-974-9935.

Chart 18662

LNM: 38/11

**NORTHERN CALIFORNIA-MARINE CONSTRUCTION-SAN FRANCISCO BAY Updated 22 AUG 11**

Vortex will conduct continuous pile driving operations and reconstruction of pier 43 until 12 Aug 12 in position 37-48-35N 122-24-37W. D/B VENGENCE will monitor VHF-FM Chan. 13 and 14. Temporary anchorages have been established in positions: 37-48-38N 122-24-58W, 37-48-38N 122-24-55W, 37-48-36N 122-24-49W. Mariners are requested to transit the area with caution at a reduced wake. For more details or comments contact John Miller at 510-812-1084.

Chart 18650

LNM: 28/11

**NORTHERN CALIFORNIA-MONTEREY BAY-WAVE GLIDER TEST OPERATIONS**

Liquid Robotics, Inc. continues 24/7 autonomous, unmanned vehicle ([www.liquidr.com](http://www.liquidr.com) <<http://www.liquidr.com/>> ) operations in Monterey Bay. Operations consist of surveys around MBM1 (36 45.00N, 122 10.20W) at 2350km radius to the buoy's mooring; and from 36 51.22N, 121 57.66W to 36 38.69N, 122 10.49W collecting scientific data within these regions. The Wave Glider is conducting related operations making best speed to and from its respective operating area (recovery planned 11-JAN-2012). The Wave Glider is remotely operated, propelled under its own power, unattended, moving at speeds of up to 1kt and designed to "lose" in any type of collision with any vessel. It is approximately 6.5' x 2' (surfboard size), tan in color, with a mast extending 3 feet above the water surface supporting a flag. Mariners are advised to use caution when transiting the area. For more details or comments contact Liquid Robotics 24/7 Operations at 888-574-4574, 408-636-4260, or email [support@liquidr.com](mailto:support@liquidr.com)

Chart 18685

LNM: 51/11

**NORTHERN CALIFORNIA-PIER RECONSTRUCTION-TRINIDAD HEAD**

West Coast Contractors, Inc will be conducting pier reconstruction until 31 May 12 in the vicinity of 41-03-20N 124-08-41W. Mariners are advised to use caution when transiting the area. For more details or comments contact James Ammon at 530-739-3828 or Julian Koerner at 541-290-2300.

Chart 18605

LNM: 35/11

**NORTHERN CALIFORNIA-REMOTELY OPERATED VEHICLE OPERATIONS-MONTEREY**

The National Data Buoy Center will be conducting ROV operations until 31 Mar 12 centered by position 36-48-50N 122-19-40W. All Mariners are requested to transit the area with caution. For more details or comments contact NOAA at 228-688-2835.

Chart 18680

LNM: 42/11

**NORTHERN CALIFORNIA-TEMPORARY CHANGE-SANTA CRUZ HARBOR**

Santa Cruz West Breakwater Light (LLNR 300/4085) temporary change: The light flash characteristic has been changed to FIG 4s, the nominal range has been reduced to 5nm and the sound signal has been discontinued while repairs are made to the light's electrical power system. Direct any questions, comments, or feedback to LT Melissa Smith at 510-437-5984 or Melissa.A.Smith@uscg.mil

Charts: 18020 18680 18685

LNM: 46/11

**SOUTHERN CALIFORNIA-BRIDGE-CERRITOS CHANNEL Current 07 Nov 11**

REPLACEMENT SCHUYLER HEIM BRIDGE CONSTRUCTION - Two eastern trestles are being constructed adjacent to the existing bridge. Once completed the trestles will provide 75 feet of horizontal clearance at the main navigation span and will be lighted at night with steady burning red lights. (See trestle/falsework lighting diagram enclosure at the end of this notice) Work will take place Monday through Friday, 0700 to 1530 local time. For conditions at the bridge mariners can contact: Caltrans, 213-444-1171; MCM Construction, 714-305-2725; MCM Construction, 714-330-5370. Mariners are urged to use caution while transiting the work site.

Chart 18749

LNM: 45/11

**SOUTHERN CALIFORNIA-BRIDGE-MISSION BAY Current 18 Nov 11**

ROSE CREEK INLET- New pedestrian bridge construction is in progress during daylight hours, Monday through Friday, through Feb 2012. For more details or comments contact Fred Reichel, City of San Diego at 619-980-6883.

Chart 18765

LNM: 25/11

**SOUTHERN CALIFORNIA-CONSTRUCTION-LOS ANGELES-Updated 10 May 11**

Manson Construction will be conducting demolition and construction operations until 02 Feb 13 in the vicinity of Piers D, E, and F, Berths D28-D31, E11-E27 and F1-F6 in position 33-45-46N 118-12-49W. D/B LOS ANGELES, D/B LONG BEACH, D/B VAHALLA, VALKYRIE, NORSEMAN with tugs PATCONA, LARCONA, ELMER M and JEFFERY M will monitor VHF-FM Chan. 13, 66, and 79A. Mariners are advised to use caution when transiting the area due to derrick barge anchor spread areas. For more details or comments contact Luis Camacho at 562-577-0718.

Chart 18751

LNM: 15/11

**SOUTHERN CALIFORNIA-DEMOLITION-SAN DIEGO BAY Updated 22 Sep 11.**

R.E. Staite Engineering Inc. and Nielsen-Beaumont will conduct a continuous marine construction project until 31 Dec 11 in position: 32-43-12N 117-13-30W at the Shelter Island Marina. D/B PALOMAR will monitor VHF-FM Chan. 16. Vessel operators are requested to transit the area with caution and proceed when passing arrangements have been made. For more details or comments contact Tom Nielsen at 619-233-0178 or 619-520-8119.

Chart 18773

LNM: 28/11

**SOUTHERN CALIFORNIA-DIVE OPERATIONS-GULF OF SANTA CATALINA**

Aqueos Corporation will be conducting underwater pipeline inspection work from 02 Jan 12 through 28 Jan 12. The work area will take place from PLATFORM ELLY (33° 34' 57" N; 118° 07' 42" W) to shore, inspecting a 16-Inch subsea pipeline and power cables between ELLY/ELLEN and EUREKA. The operations will include the M/V MICHAEL UHL using an underwater remote operated vehicle (ROV) "flying" the pipelines to complete the inspections. The vessel will not be anchored and will conduct continuous operations while following the pipelines path. The vessel will monitor VHF-FM Chan. 16. All Mariners are requested to transit the surrounding area with caution. For more details or comments contact Jason Smith at 805-205-3156.

Chart 18746

LNM: 52/11

**SOUTHERN CALIFORNIA-DREDGING-CARLSBAD**

Camenzind Dredging Inc is dredging in the Batiquitos Lagoon Central Basin until 15 Jan 12. The hydraulic dredge, PAUL VINCENT and W/B FESTER will utilize floating/submerged pipeline. All dredging vessels will monitor VHF-FM channel 16 and 67. Mariners are advised to use caution while transiting this area. For more details or comments contact Kurt Camenzind at 650-424-0367.

Chart 18774

LNM: 44/11

**SOUTHERN CALIFORNIA-DREDGING/CONSTRUCTION-PORT OF LOS ANGELES Updated 23 Dec 11**

Manson Construction Co. is conducting construction and dredging operations until 31 Dec 13 in the construction zone from the northwest slip to Cabrillo Shallow Water Habitat. D/B VULCAN, SCOW ROCKPORT and tugboat ELMER will monitor VHF-FM Chan. 16, 66 and 67. Mariners are advised to use caution when transiting the area. For details or comments contact Brad Hunter at 562-762-5241 or Jim Davis at 562-822-1367. See Enclosures Section for 12 23 2011LNTM.pdf.

Chart 18751

LNM: 44/10

**SOUTHERN CALIFORNIA-HAZARDOUS OPERATIONS-SOUTH OF SAN CLEMENTE ISLAND**

**SOUTHERN CALIFORNIA-HAZARDOUS OPERATIONS-SOUTH OF SAN CLEMENTE ISLAND**

The U.S. Navy will conduct continuous operations until 31 Dec 11, in an area bounded by the following coordinates:

- 32-33-00N 118-25-00W
- 32-35-00N 118-16-00W
- 32-35-00N 117-40-00W
- 31-55-00N 117-40-00W
- 31-55-00N 118-25-00W
- 32-33-00N 118-25-00W

Thence to the point of origin.

Mariners are advised to avoid this area and use due caution when transiting outside of this area. For more details or comments contact Darrel Rumsey at 619-545-1757.

Chart 18740

LNM: 49/11

**SOUTHERN CALIFORNIA-MARINE CONSTRUCTION-LONG BEACH**

Manson Construction Co. will conduct concrete pile removal, dredging, and concrete pile driving in Alamitos Bay, in position 33-45-16N 118-06-56W. Construction will take place until 31 Dec 11. D/B VULCAN, NORSMAN, tug's ELMER M, APACHE, ARAPAHOE, will be monitoring VHF-FM channels 13, 16, and 67. Mariners are advised to use caution when transiting this area. For more details or comments contact Brad Hunter at 562-762-5241.

Chart 18749

LNM: 40/11

**SOUTHERN CALIFORNIA-MARINE CONSTRUCTION-SAN DIEGO**

The U.S. Customs and Border Protection will be replacing the San Diego Surf Fence on the U.S. / Mexico border until Feb 2012, in position 32-32-03.65N 117-07-26.74W and extending 320 feet to the west. For more details or comments contact James Clark at 760-427-9334.

Chart 18765

LNM: 44/11

**SOUTHERN CALIFORNIA-MARINE CONSTRUCTION-SAN DIEGO**

R. E. Staite Engineering will conduct fender systems upgrade to the B Street Pier until 09 May 12 in position 32-42-15.53N 117-09-59.92W. The Barge 180 will monitor VHF-FM Chan. 16. Mariners are requested to transit the area with caution and proceed at the slowest speed possible. For more details or comments contact Dave Lobaugh 619-223-0178.

Chart 18773

LNM: 37/11

**SOUTHERN CALIFORNIA-MARINE CONSTRUCTION-SAN DIEGO BAY**

Marathon Construction Corporation will conduct continuous marine construction until 02 Apr 12 at the Naval Base Coronado Berths Juliet and Kilo in position: 32-42-43.92N 117-11-22.92W. Mariners are advised to use caution when transiting the area. For more details or comments contact Timothy G. Meyer at 619-843-8975.

Chart 18773

LNM: 32/11

**SOUTHERN CALIFORNIA-OCEAN RESEARCH EQUIPMENT-OCEANSIDE**

MBC Applied Environmental Sciences has deployed oceanographic monitoring equipment until 05 Aug 12 offshore of the Santa Margarita River near Oceanside Harbor at an approximate depth of 90 feet in position: 33-12-24.5N 117-26-48.1W. A 4-foot yellow spar buoy will be sited above the equipment. Mariners are requested to transit with caution. For more details or comments contact Robert Moore at 714-850-4830.

Chart 18774

LNM: 30/11

**SOUTHERN CALIFORNIA-PIPELINE REPLACEMENT PROJECT-SAN PEDRO CHANNEL**

Helix Energy Solutions Group will conduct pipe replacement activities until 30 Dec 11 bounded by the following positions:

- 33-34-54N 118-08-23W
- 33-35-35N 118-07-28W
- 33-34-04N 118-06-07W
- 33-33-24N 118-07-25W

The M/V INTREPID, NICHOLAS, PATRIOT and KENNETH CARL will monitor VHF-FM Chan. 10 and 16. Mariners are requested to transit the area with caution due to the limited maneuverability of these vessels. For more details or comments contact Ernie Weber at 713-906-9412 or Robert Pyle at 562-628-1540. See Enclosures Section for HESG.pdf

Chart 18740

LNM: 47/11

**SOUTHERN CALIFORNIA-PIPELINE REPLACEMENT PROJECT-SANTA BARBARA**

Helix Energy Solutions Group is conducting pipe replacement activities until 15 Feb 12, bounded by the following positions:

- 34-20-35N 119-37-53W
- 34-19-16N 118-35-44W
- 34-20-14N 119-35-31W
- 34-19-35N 119-38-50W

The M/V AMERICAN PATRIOT, INTREPID, DANNY C, RYAN T, ALAN T and American Spirit will monitor VHF-FM Chan. 10 and 16. Mariners are requested to transit the area with caution due to the limited maneuverability of these vessels. For more details or comments contact Aaron Weber at 713-992-1214, Bob Garcia at 805-766-5669, Dan Farah at 805-535-2067. See Enclosures Section for Platform.pdf

Chart 18720

LNM: 51/11

**SOUTHERN CALIFORNIA-SHOALING-OCEANSIDE HARBOR**

The Army Corps of Engineers reports -15ft MLLW severe shoaling in the entrance to the Oceanside Harbor within the following positions.

**SOUTHERN CALIFORNIA-SHOALING-OCEANSIDE HARBOR**

33 12 20.893N 117 24 01.351W  
33 12 20.118N 117 24 04.872W  
33 12 18.629N 117 24 05.441W  
33 12 16.908N 117 24 04.241W  
33 12 15.943N 117 24 01.581W

The Shoal continues East outside the entrance channel with the shallowest point at -10ft MLLW in position 33 12 19.392N 117 24 03.097W. Mariners are requested to transit the area with caution. For more details or comments contact Joe Ryan at 213-452-3679. See enclosures section for OS-shoal.pdf

Chart 18774

LNM: 39/11

**SECTION VIII - LIGHT LIST CORRECTIONS**

An Asterisk \*, indicates the column in which a correction has been made to new information

(1) No.	(2) Name and Location	(3) Position	(4) Characteristic	(5) Height	(6) Range	(7) Structure	(8) Remarks
None							

**PUBLICATION CORRECTIONS**

**COAST PILOT 7-NEW EDITION**

PUBLICATION—National Oceanic Atmospheric Administration (NOAA)—U.S. Coast Pilot 7, Pacific Coast: California, Oregon, Washington, Hawaii and Pacific Islands, 2012, 44th Edition, is ready for issue and may be obtained from authorized chart agents and their sales outlets. Price \$30.00. An agent listing may be viewed at <http://aeronav.faa.gov>.

The Coast Pilot may also be viewed and downloaded at <http://nauticalcharts.noaa.gov/nsd/cpdownload.htm>.

The 2012 Edition cancels the preceding 2011 Edition.

All corrections to the previous edition issued in Notices to Mariners are incorporated in this edition. Mariners are encouraged to use the convenient "Weekly Record of Updates" form on Page V of this book. All Coast Pilot changes published in the U.S. Coast Guard Local Notice to Mariners, National Geospatial-Intelligence Agency Notice to Mariners, and located at <http://nauticalcharts.noaa.gov/nsd/cpdownload.htm> are serially numbered (i.e., Change No. 1, Change No. 2, etc.) to assist you in tracking the changes.

LNM: 50/11

**ENCLOSURES**

**SOUTHERN CALIFORNIA-MARINE SAFETY INFORMATION BULLETIN**

[MSIB Voluntary Traffic Lane 11-09.pdf](#)

See link above.

LNM: 09/10

**REPORT OF DELAY AT DRAWBRIDGE**

[DelayRept0207.pdf](#)

Use link above to Report a Delay at a Drawbridge.

LNM: 06/07

**NORTHERN CALIFORNIA-BRIDGE-SAN JOAQUIN RIVER**

[LightingPlan.pdf](#)

See link above for information on Bradshaw's Crossing Lighting

Chart 18661

LNM: 28/11

**NORTHERN CALIFORNIA-BRIDGE-SAN FRANCISCO/OAKLAND BAY BRIDGE REPLACEMENT Current 29 Aug 11**

[042210BargeDiagram.pdf](#) [AlternateChannel.pdf](#) [2009\\_Falsework.pdf](#)

See link above to view anchor diagram for work area, alternate channel marking diagram and falsework lighting.

LNM: 43/08

**SOUTHERN CALIFORNIA-BRIDGE-CERRITOS CHANNEL**

[Heim\\_FalseworkTrestleBargeLighting.pdf](#)

See link above for trestle/falsework lighting diagram.

Chart 18749

LNM: 45/11

**SOUTHERN CALIFORNIA-PIPELINE REPLACEMENT PROJECT-SANTA BARBARA**

[Platforms .pdf](#)

See link above.

Chart 18720

LNM: 51/11

**SOUTHERN CALIFORNIA-SHOALING-OCEANSIDE HARBOR**

[OS-Shoal.pdf](#)

See link above.

Chart 18774

LNM: 39/11

**SOUTHERN CALIFORNIA-PIPELINE REPLACEMENT PROJECT-SAN PEDRO CHANNEL**

[HESG.pdf](#)

See Link above.

Chart 18740

LNM: 47/11

**SOUTHERN CALIFORNIA-DREDGING/CONSTRUCTION-PORT OF LOS ANGELES UPDATED 23 DEC 11.**

[12 23 2011 LNTM.pdf](#)

See link above.

LNM: 44/10

---

THE LOCAL NOTICE TO MARINERS IS AVAILABLE ON THE WORLD WIDE WEB AT [WWW.NAVCEN.USCG.GOV/](http://WWW.NAVCEN.USCG.GOV/).

D. J. Twomey, LT  
U.S. Coast Guard  
Acting Chief, Waterways Management Branch



# U. S. Coast Guard Sector Los Angeles – Long Beach

## MARINE SAFETY INFORMATION BULLETIN 11-09

### **Los Angeles / Long Beach Harbor Safety Committee Voluntary Western Traffic Lanes**

There has been a recent trend in traffic patterns where some vessel operators are choosing to depart the Traffic Separation Scheme (TSS) established in the Santa Barbara Channel and transit through an area to the south of San Miguel, Santa Rosa and Santa Cruz Islands (referenced herein as “south of the Channel Islands”). As such, the Los Angeles / Long Beach Harbor Safety Committee has published voluntary western traffic lanes for vessels approaching and departing the Ports of Los Angeles and Long Beach.

Mariners transiting through the western and northern approaches to and from the Ports of Los Angeles and Long Beach (LA/LB) are advised the established TSS through the Santa Barbara Channel as shown on NOAA and Admiralty charts is the only International Maritime Organization (IMO) approved routing measure in this area. An IMO approved TSS reduces the risk of collision by providing for the separation of arriving and departing traffic and minimizing potentially hazardous crossing situations. Mariners, who have traditionally used this approved TSS, are encouraged to continue to do so.

### **Voluntary Western Traffic Lanes**

To address the safety concerns created by increased traffic south of the Channel Islands, on October 6, 2009, the Los Angeles/Long Beach Harbor Safety Committee (LA/LB HSC) endorsed voluntary traffic lanes in the area south of the Channel Islands (referenced herein as “voluntary western traffic lanes.”). The new voluntary western traffic lanes are not approved by the IMO, nor are they approved by any U.S. federal authority, including the U.S. Coast Guard. The LA/LB HSC developed these lanes as a voluntary measure to promote vessel safety. The Coast Guard is taking separate action to study the increased traffic in this area.

The geographical coordinates for the voluntary western traffic lanes are published by the LA/LB HSC secretary at <http://www.mxsocial.org/Blogs/24/Voluntary-Routing-Zones.aspx>.

**Pacific Missile Test Range, Point Magu**

Departing the IMO approved TSS and transiting south of the Channel Islands may result in delays and diversions, as this transit will take vessels through the Pacific Missile Test Range, Point Mugu, California. **The U.S. Navy advises that hazardous operations may take place within the test range.** The test range extends for 180 miles in a South West direction from Point Mugu and is up to 210 miles wide. The specific hazardous areas within the range are broadcast by the Navy daily Monday through Friday at 0900 and 1200 on 2638 kHz and 2738 kHz. When notified by the Navy, the Coast Guard also broadcasts this information on VHF-FM channel 16.

When transiting south of the Channel Islands (inbound or outbound to the Ports of Los Angeles and Long Beach), all mariners should communicate with Navy PLEAD CONTROL in a timely manner so that early decisions can be made regarding safe routing. Every effort should be made to comply fully with any instructions received from the Navy. For information regarding the status of current hazardous operations contact “PLEAD CONTROL” on VHF Marine channel 11 or 16, or at (805) 989-8841/8843 from 0600-1800, and at (805) 816-0792 after 1800. If you are unable to contact “PLEAD CONTROL”, contact “SAN PEDRO TRAFFIC” on VHF-FM channel 14 or (310) 832 6411 for the most recent information regarding hazardous military operations.

The Navy requests all vessels transiting the range to submit a notification to PLEAD CONTROL indicating the vessel name, destination, and estimated time of entry into, and departure from, the test range. Notifications can be faxed to (805) 989-0102.

### **Whales**

Mariners are further reminded that large whales, including Blue, Grey, Humpback, and Fin whales, as well as other marine mammals, have been sighted in and around the Santa Barbara Channel, both within the TSS as well as to the south of the Channel Islands. These whales are all protected under federal law and some are listed as endangered species. Please report any collisions with whales or any observed live, injured, or dead whales, including time and position, to the National Oceanographic and Atmospheric Administration (NOAA) at 877-SOS-WHALE (877-767-9425) or the Coast Guard.

### **Recreational and Fishing Vessels**

The area to the south of the Channel Islands is also used by both commercial fishing vessels and recreational vessels, whose operators may not be aware of the new voluntary western traffic lanes or that ship traffic has recently increased in this area. Since the new voluntary western traffic lanes are not an IMO approved traffic separation scheme, the International Regulations for Avoiding Collisions at Sea (COLREGS) Rule 10 does not apply.

### **Questions**

Questions relating to the voluntary western traffic lanes should be directed to the LA/LB HSC Secretary at (310) 832-6411.

**U.S. COAST GUARD  
REPORT OF DELAY AT DRAWBRIDGE  
PER 33 CFR 117.5**

BRIDGE NAME \_\_\_\_\_ DATE \_\_\_\_\_

MILE \_\_\_\_\_ WATERWAY \_\_\_\_\_

1. Name/ Type of Vessel \_\_\_\_\_ Direction of Travel \_\_\_\_\_

2. Vessel Owner (Name) \_\_\_\_\_

(Address) \_\_\_\_\_

3. Name of Pilot (if applicable) \_\_\_\_\_

(Address) \_\_\_\_\_

4. Time vessel signaled for bridge opening \_\_\_\_\_

5. Location of vessel when signal was given \_\_\_\_\_

6. Time and location of vessel when delay began \_\_\_\_\_

7. Method of signal for bridge opening ( ) Radio ( ) Sound ( ) Visual

(If sound or visual signal was used, specify \_\_\_\_\_)

8. Time bridge operator acknowledged signal \_\_\_\_\_

9. Method of bridge operator acknowledgement ( ) Radio ( ) Sound ( ) Visual

(If sound or visual signal was used, specify \_\_\_\_\_)

10. Did bridge operator acknowledgement indicate the bridge

( ) Could be opened immediately

( ) Could not be opened immediately

11. If land traffic crossed the bridge:

Time land traffic started across the bridge \_\_\_\_\_

Time land traffic stopped crossing the bridge \_\_\_\_\_

Did land traffic stop on the bridge? \_\_\_\_\_

Duration land traffic stopped on the bridge \_\_\_\_\_

12. Time drawbridge opened for navigation \_\_\_\_\_

14. Additional comments \_\_\_\_\_

\_\_\_\_\_

\_\_\_\_\_

\_\_\_\_\_

I certify the above information is true to the best of my knowledge and understand this statement may be used by the U.S. Coast Guard in levying fines against the bridge owner.

Signature \_\_\_\_\_

Telephone \_\_\_\_\_

Mariners may complete and send via fax or mail to:

USCG D11(dpw) Bridge Administration

Building 50-2

Coast Guard Island

Alameda, CA 94501-5100

**Cellular: (510) 219-4366**, Work Phone: (510) 437-3516

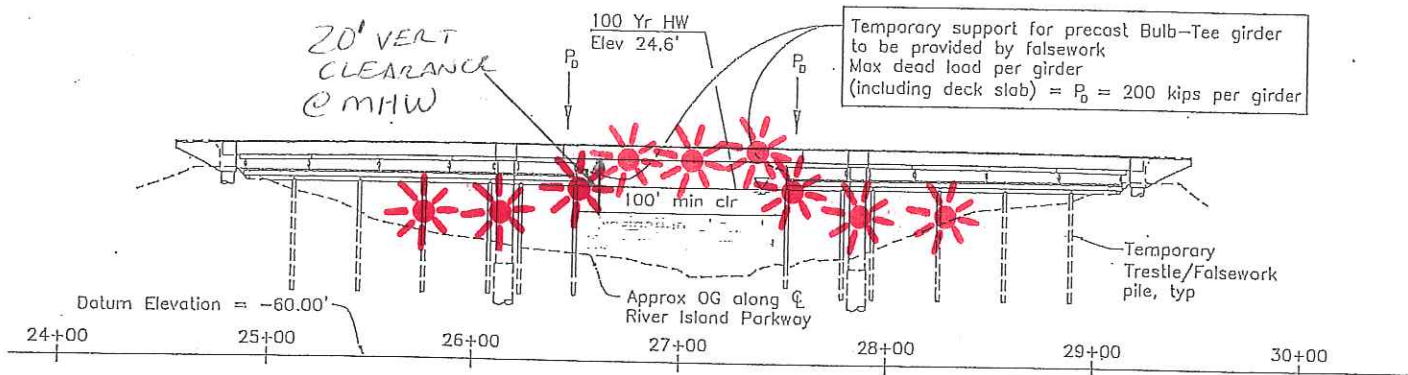
Work Fax: (510) 437-5836

Mariners are reminded not to require bridge openings for appurtenances nonessential to navigation, per 33 CFR 117.11

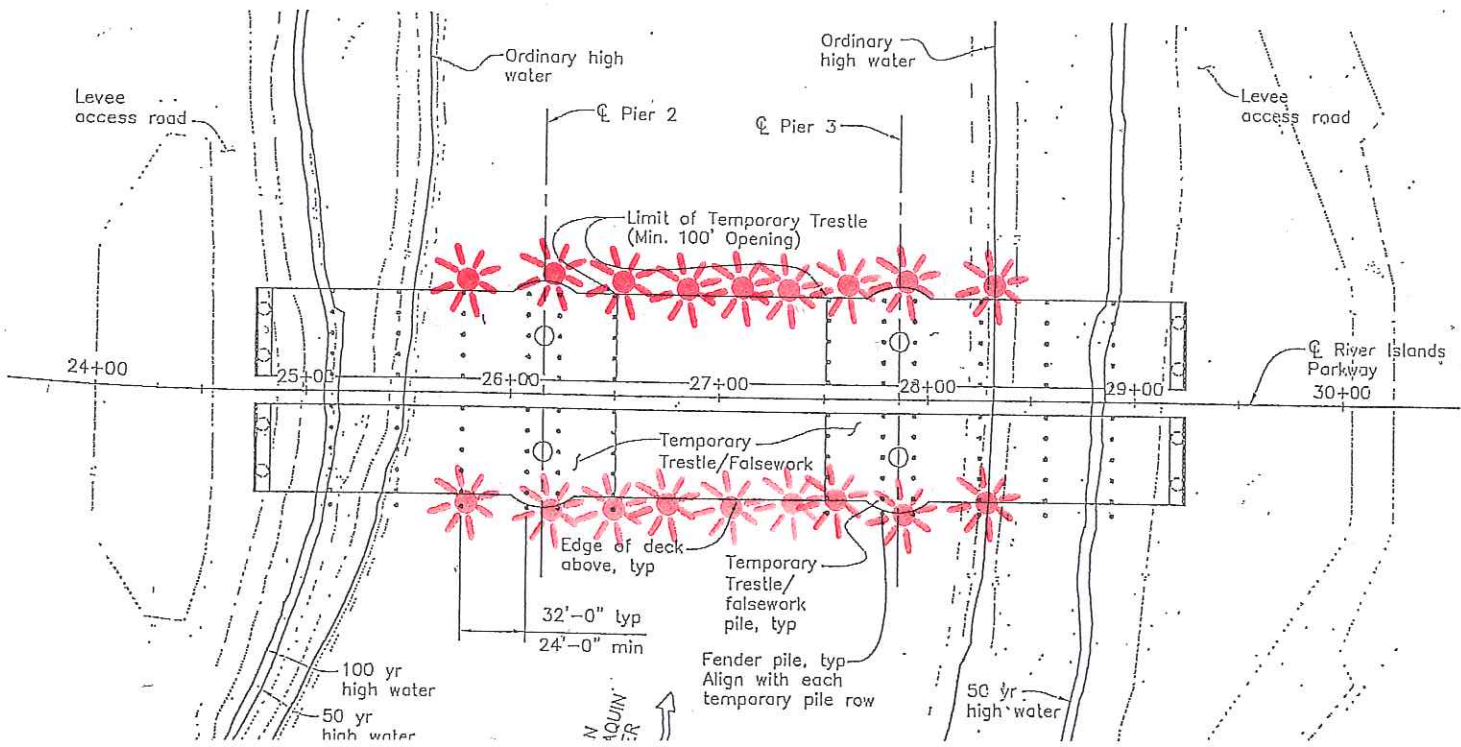
# Temporary Trestle Lighting Diagram

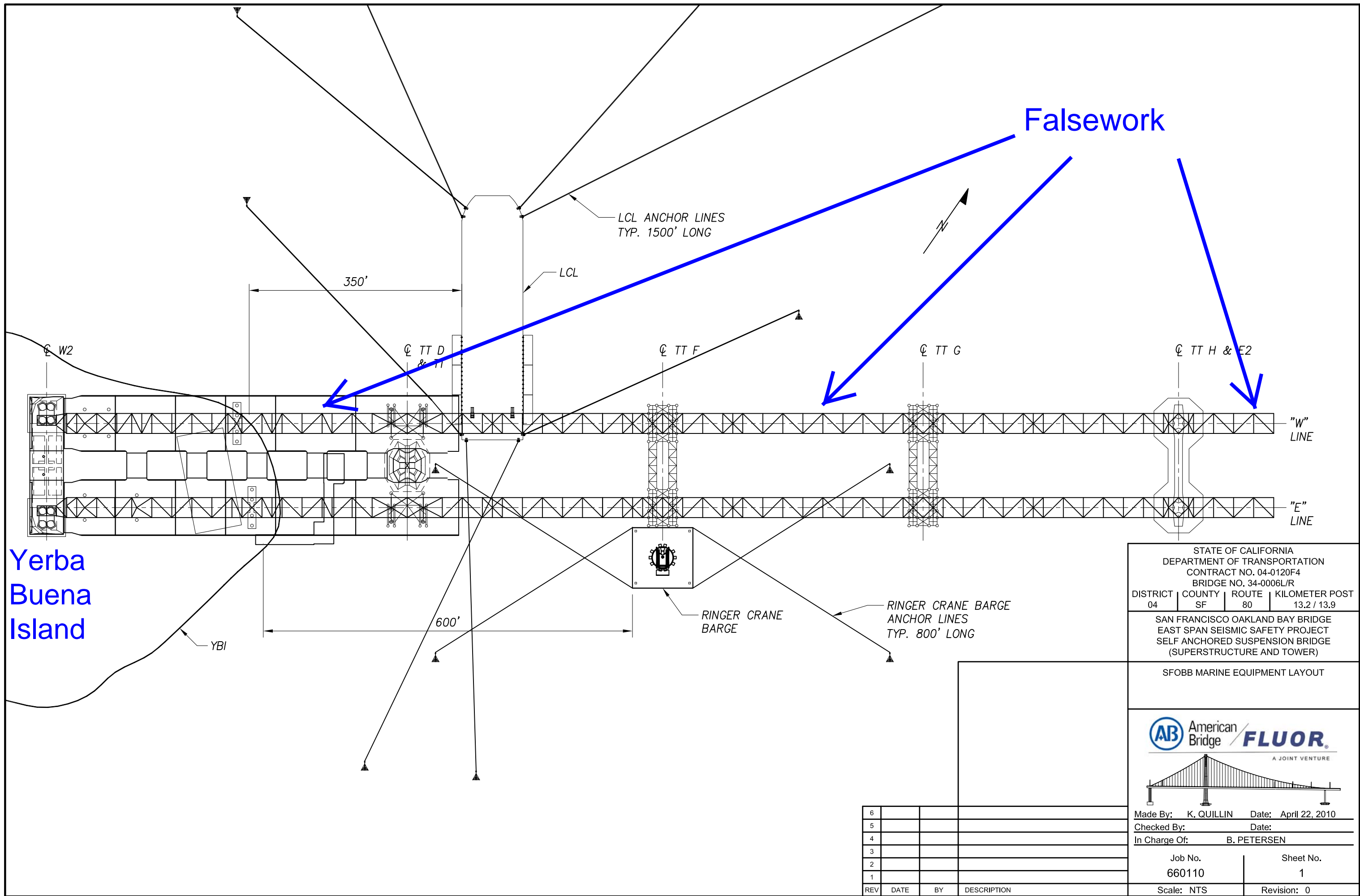
## Bradshaw's Crossing Bridge Mile 54.2, San Joaquin River

The upstream and downstream corners of the trestle, adjacent to the main navigation span, shall be lighted at night with steady burning red lights, visible at 2,000 yards by approaching vessels. All wet trestle columns shall be lighted at night with steady burning red lights, visible at 2,000 yards by approaching vessels. The lights on the columns shall be mounted at least 1 feet above the 100 year flood mark. Steady burning red lights, visible at 2,000 yards by approaching vessels, shall be placed upstream and downstream on the over-the-channel falsework and shall be spaced every 25 feet.



**TEMPORARY TRESTLE / FALSEWORK**  
1"=40'-0"





Falsework

LCL ANCHOR LINES  
TYP. 1500' LONG

LCL

350'

W2

TT D  
& TT

TT F

TT G

TT H & E2

"W"  
LINE

"E"  
LINE

Yerba Buena Island

YBI

600'

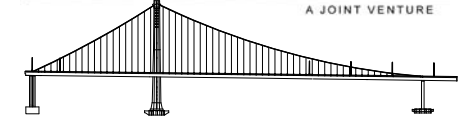
RINGER CRANE BARGE

RINGER CRANE BARGE  
ANCHOR LINES  
TYP. 800' LONG

STATE OF CALIFORNIA  
DEPARTMENT OF TRANSPORTATION  
CONTRACT NO. 04-0120F4  
BRIDGE NO. 34-0006L/R  
DISTRICT 04 COUNTY SF ROUTE 80 KILOMETER POST 13.2 / 13.9

SAN FRANCISCO OAKLAND BAY BRIDGE  
EAST SPAN SEISMIC SAFETY PROJECT  
SELF ANCHORED SUSPENSION BRIDGE  
(SUPERSTRUCTURE AND TOWER)

SFOBB MARINE EQUIPMENT LAYOUT



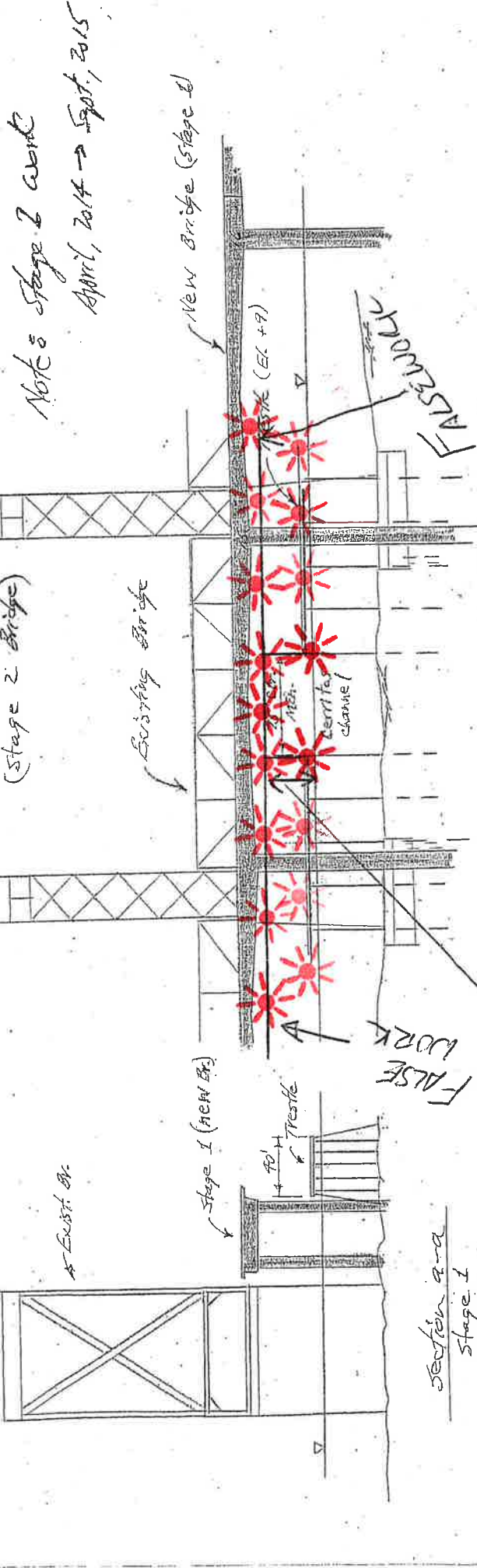
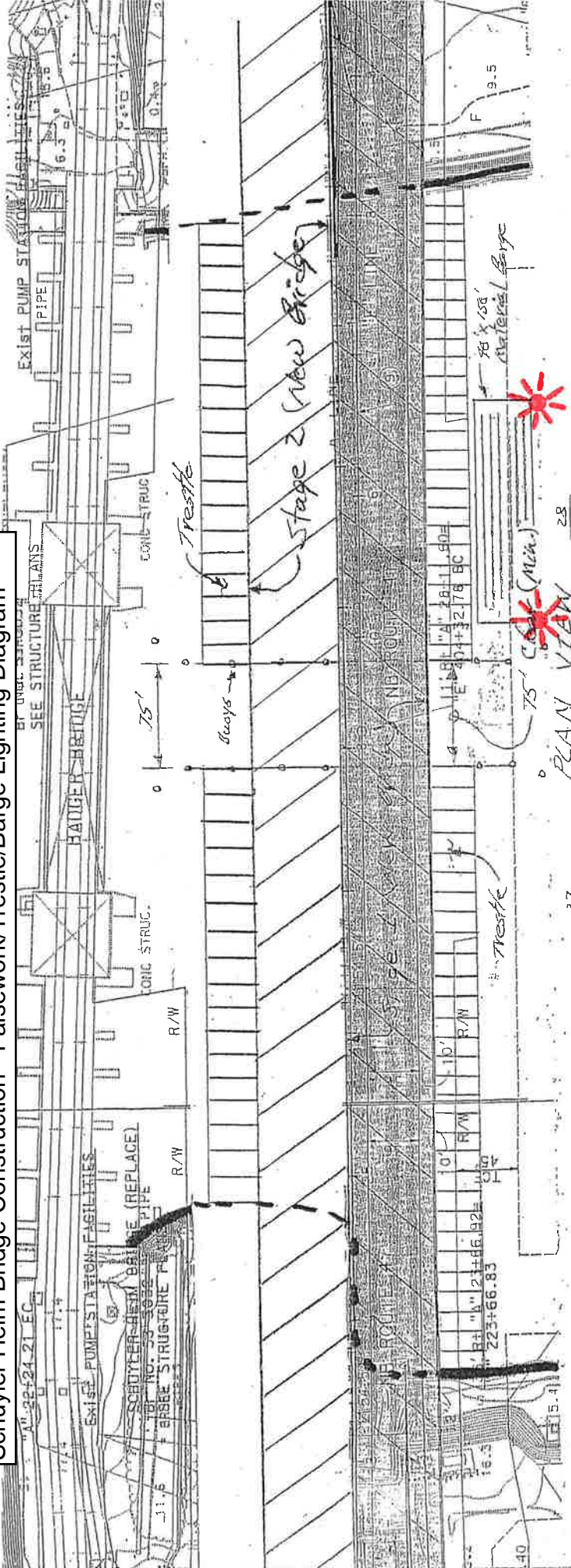
Made By: K. QUILLIN Date: April 22, 2010  
Checked By: Date:  
In Charge Of: B. PETERSEN

Job No. 660110 Sheet No. 1

Scale: NTS Revision: 0

6			
5			
4			
3			
2			
1			
REV	DATE	BY	DESCRIPTION

**Schuyler Heim Bridge Construction - Falsework/Trestle/Barge Lighting Diagram**

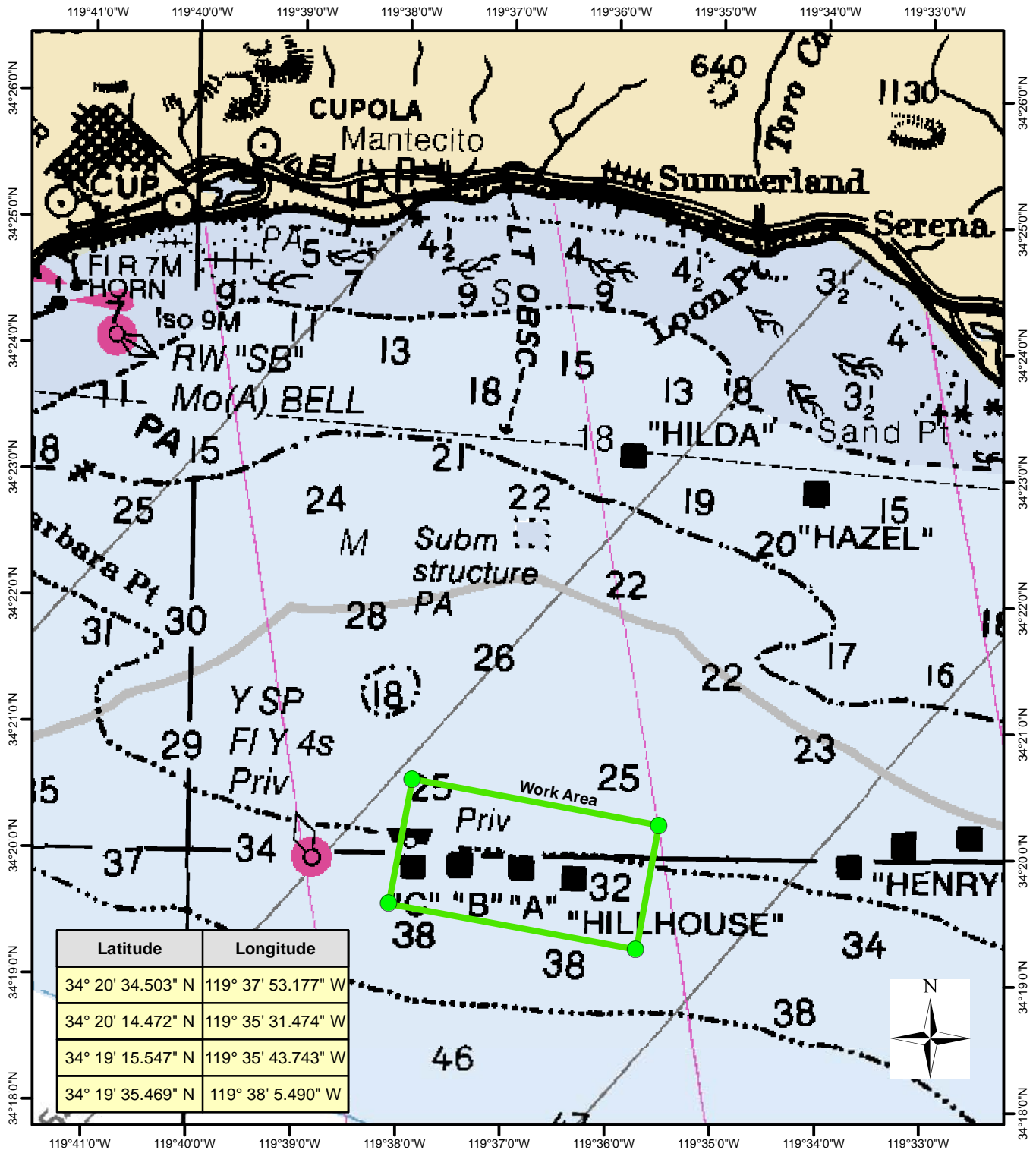


Note: Stage 2 work  
 April, 2014 → Sept, 2015

The upstream and downstream sides of the trestle and falsework shall be lighted, at night, with steady burning all round red lights, spaced 25 feet apart.

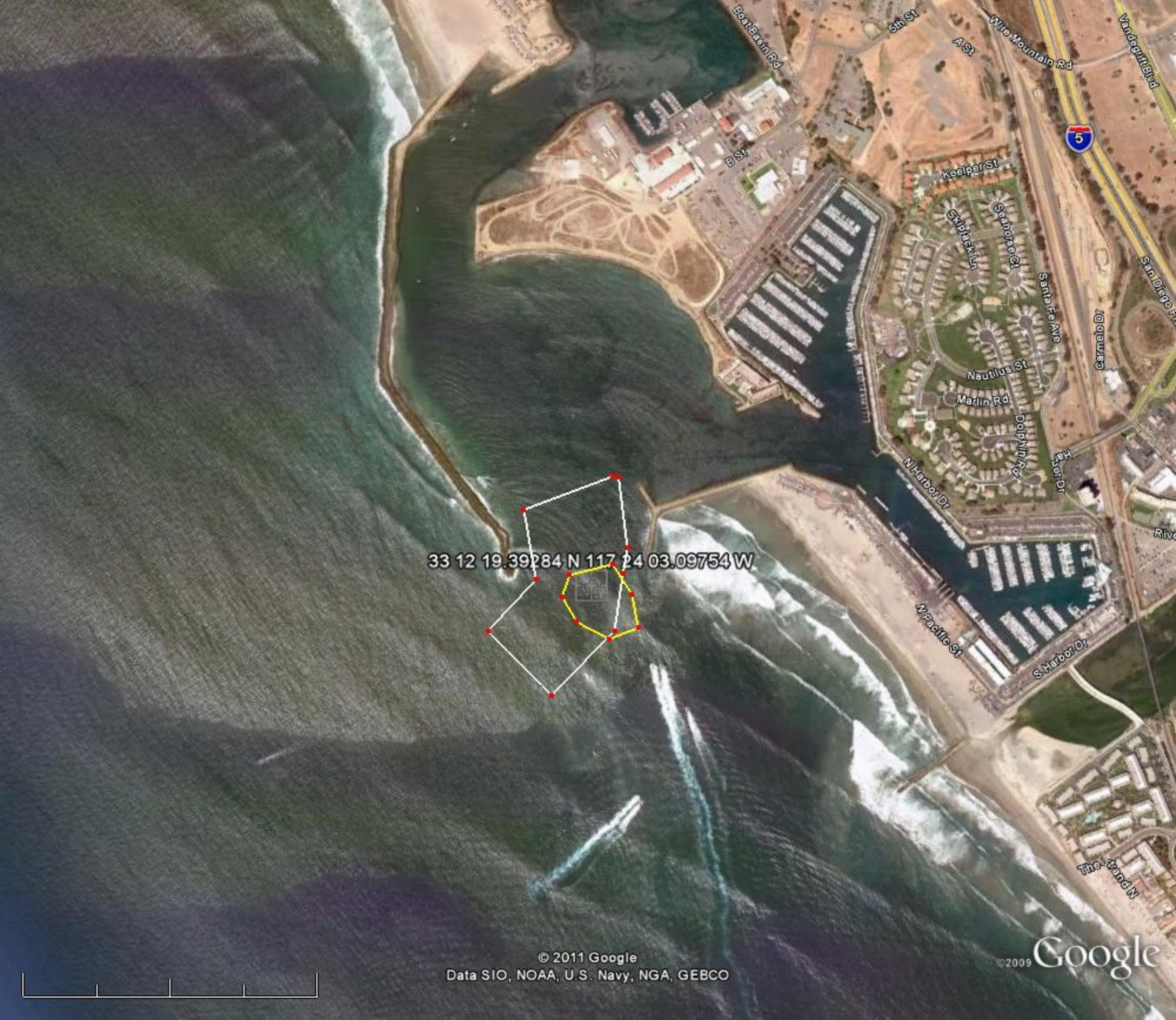
Each outboard corner of the moored barge shall be lighted at night with steady burning all round red lights.

Section a-a  
 Stage I shown



NOAA NAUTICAL CHART 18720 WITH WORK AREA

Offshore Santa Barbara, California

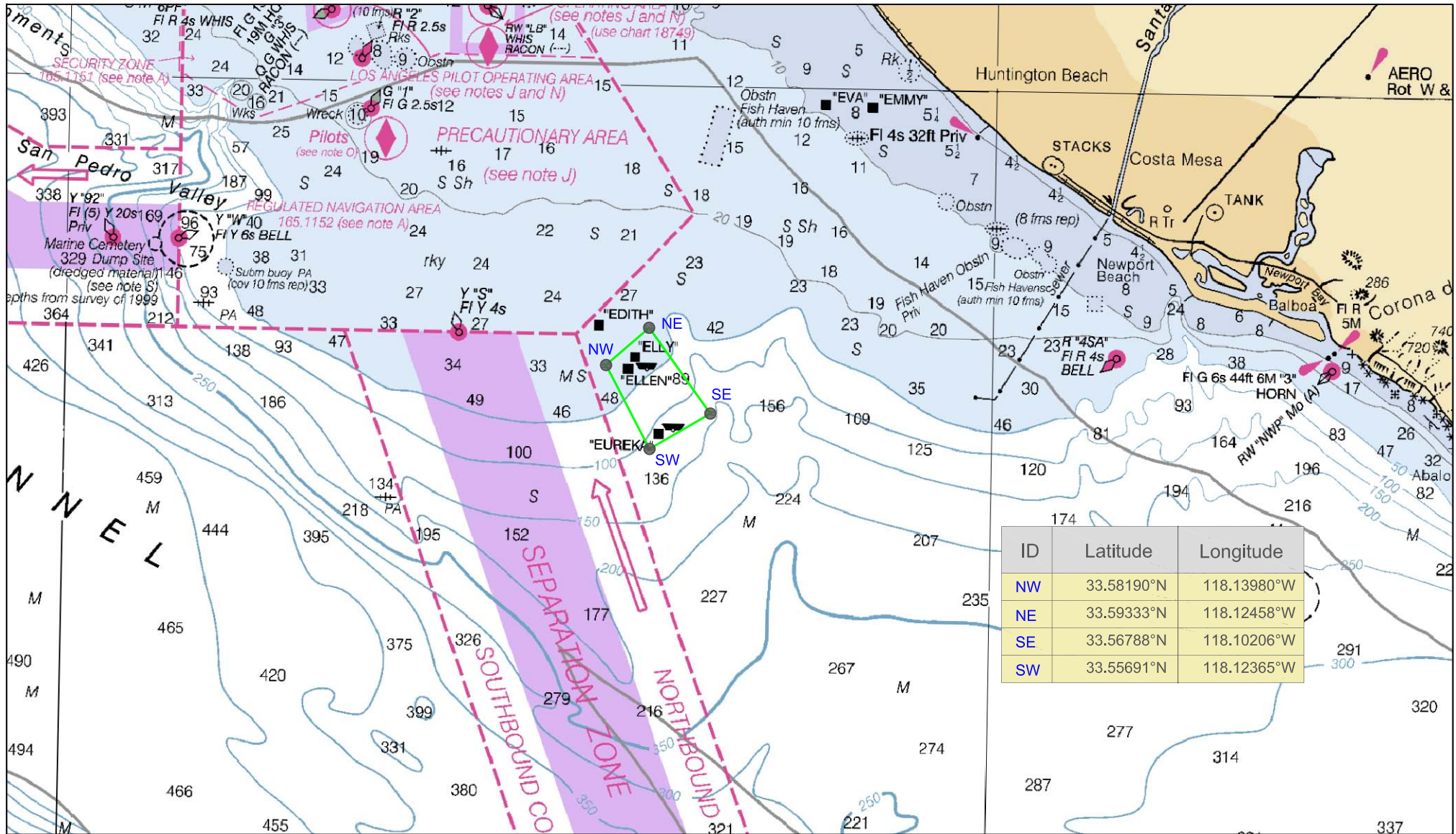


33 12 19.39284 N 117 24 03.09754 W



# NOAA NAUTICAL CHART 18740 WITH PROPOSED PROJECT AREA

NOAA NAUTICAL CHART 18740 WITH PROPOSED PROJECT AREA  
San Pedro Channel, California



# **NOTIFICATION OF VESSEL OPERATIONS**

**Date: December 23, 2011**

**To: U.S. Coast Guard, Marine Safety Group**

**Attn: BM2 Guy Langman**  
1001 Seaside Ave., Bldg 20  
San Pedro, CA 90731  
(310) 521-3867

**From: LA Deepening Constructors**

772 Tuna Street  
San Pedro, CA 9023  
(310) 521-1300 Phone  
(310) 833-5657 Fax

## **COMMENTS:**

The DB Vulcan along with the tugboat Elmer and the scow Rockport will continue dredging at the Southwest Marine Construction Area. The DB Vulcan will work from 0600 hours to 1800 hours. The rig will be store at the site for the weekend and following week. The DB Vulcan will resume work Tuesday 01/03/2011.

The rigs use Channel 67 and monitor channels 66 & 16. The DB Vulcan will be working on electric powered by a cable from the Manson spill barge at Berth 233 laid at the channel bottom. Attached is a graphic outlining the Southwest Marine Construction Zone.

For questions, please call Brad Hunter at (562) 762-5241.

The following contacts may be called in case of emergency:

Brad Hunter,	Project Engineer	(562) 762-5241
Eric Faria,	Dredge Captain	(562) 762-5396
Tim O'Neil,	Field Engineer	(310) 762-5724
	DB Vulcan	(562) 762-5259

The Manson spill barge is at Berth 233 today. The barge has a cable laid on the bottom to the substation at Berth 173 and to the DB Vulcan at Southwest Marine. The rig will be stored at the site for the weekend and following week.

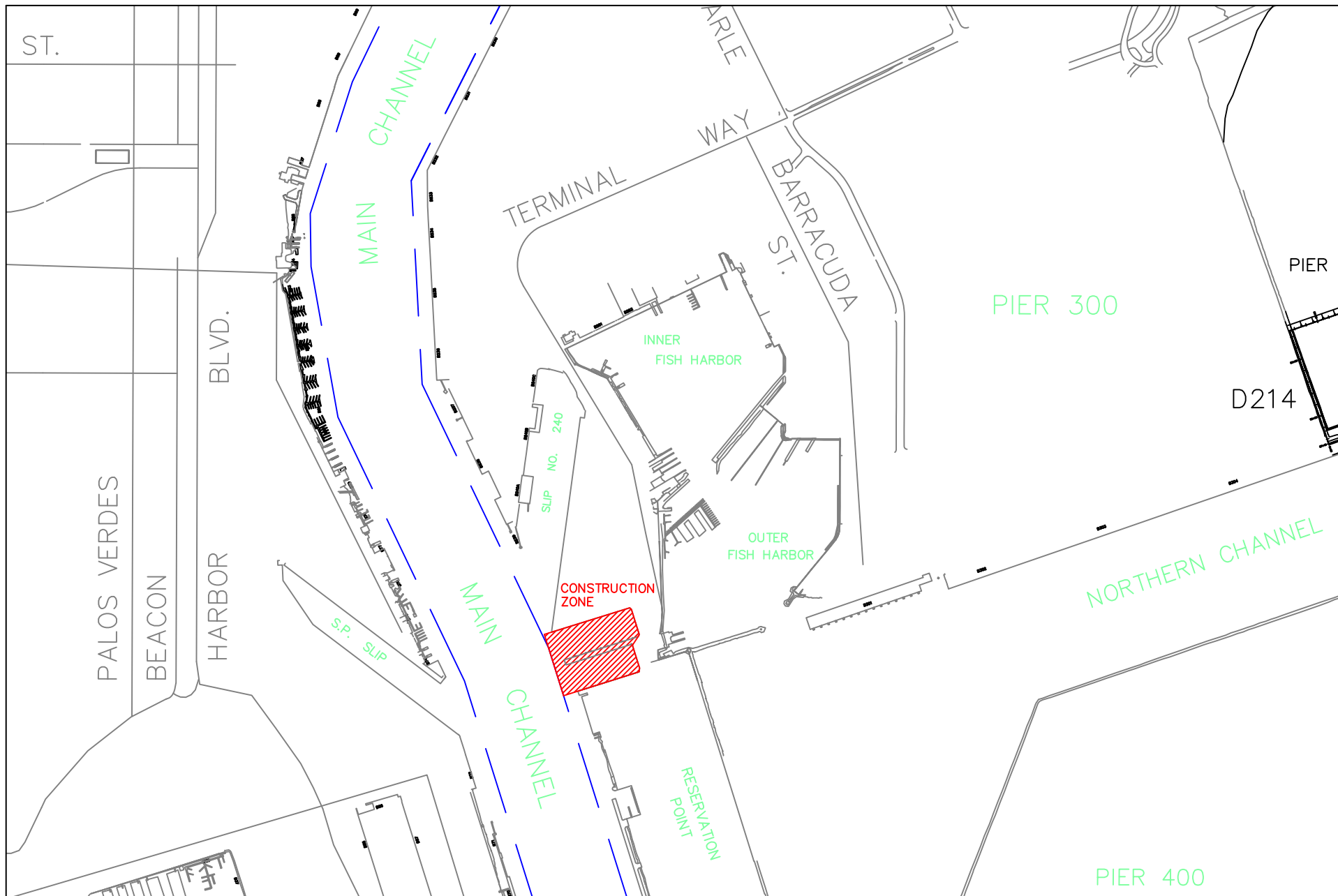
The rig uses Channel 67 and monitors channels 66 & 16. Attached is a graphic outlining the Berth 233 Area.

For questions, please call Brad Hunter at (562) 762-5241.

The following contacts may be called in case of emergency:

Brad Hunter,	Project Engineer	(562) 762-5241
Eric Faria,	Dredge Captain	(562) 762-5396
Tim O'Neil,	Field Engineer	(310) 762-5724

Our Nation is still at war. Report suspicious activity to the National Response Center  
**1-800-424-8802** or USCG MARINE TERMINAL SECURITY **703-313-5800**



**SHEET:**  
1 of 1

**LA DEEPENING:**  
Southwest Marine  
Los Angeles, California

**NOTES:**  
Construction Zone thatched in red.

LA DEEPENING CONSTRUCTORS, a JV



772 TUNA STREET TERMINAL ISLAND, CA 90731 PHONE: 310.521.1300 FAX: 310.833.5657

Sheet  
1 of 1

USACOE  
POLA Channel Deepening  
Project  
DACV09-02-C-008-R00104  
Cerritos Channel  
Dredge Element D210

Notes:  
Surveyed By:  
Survey Date:  
Plot Date:  
Drawn By:  
Checked By:  
Drawing Name:

Datum:  
Horizontal: State of California Zone 5 - 83 ft  
Vertical: MLLW ft

N1728151.61  
E6478090.35  
N1728011.61  
E6478090.35

L A D E E P E N I N G C O N S T R U C T O R S , a J V



772 TUNA STREET SAN PEDRO, CA 90731-7378 PHONE: 310-521-1300 FAX: 310-833-9657

