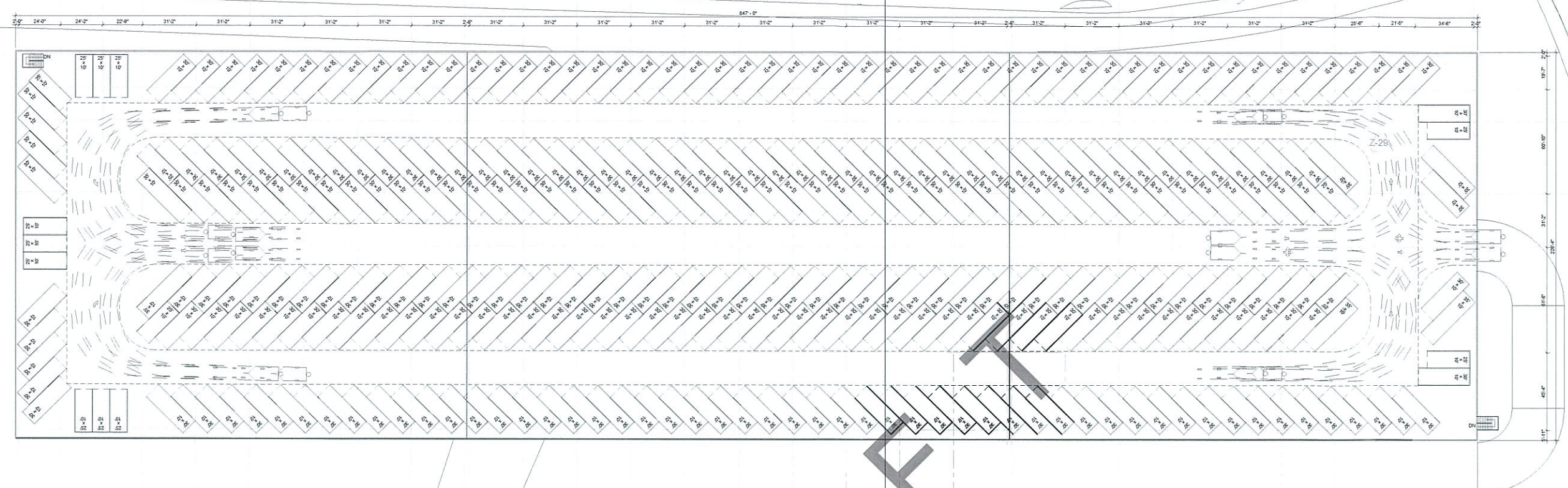
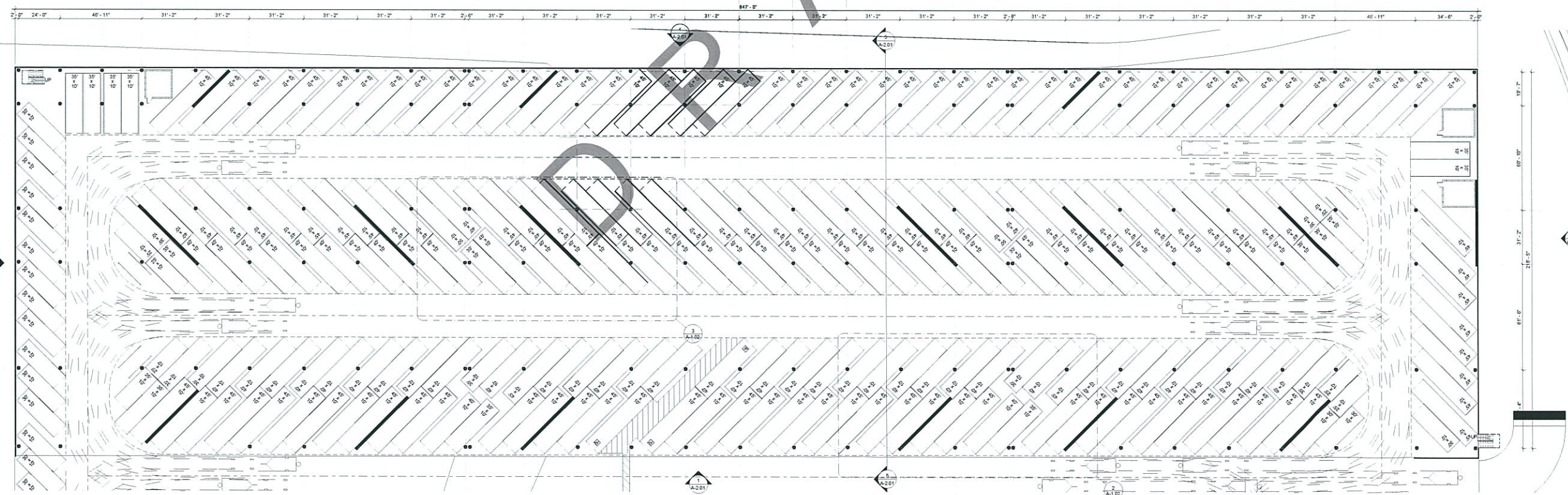


Z-1 Z-2 Z-3 Z-4 Z-5 Z-6 Z-7 Z-8 Z-9 Z-10 Z-11 Z-12 Z-13 Z-14 Z-15 Z-16 Z-17 Z-18 Z-19 Z-20 Z-21 Z-22 Z-23 Z-24 Z-25 Z-26 Z-27 Z-28 Z-29 Z-30 Z-31



Level 2 3/64" = 1'-0" 2

Z-1 Z-2 Z-3 Z-4 Z-5 Z-6 Z-7 Z-8 Z-9 Z-10 Z-11 Z-12 Z-13 Z-14 Z-15 Z-16 Z-17 Z-18 Z-19 Z-20 Z-21 Z-22 Z-23 Z-24 Z-25 Z-26 Z-27 Z-28 Z-29 Z-30 Z-31



Level 1 3/64" = 1'-0" 1

DANA POINT HARBOR REVITALIZATION

COUNTY OF ORANGE
DANA POINT HARBOR DRIVE



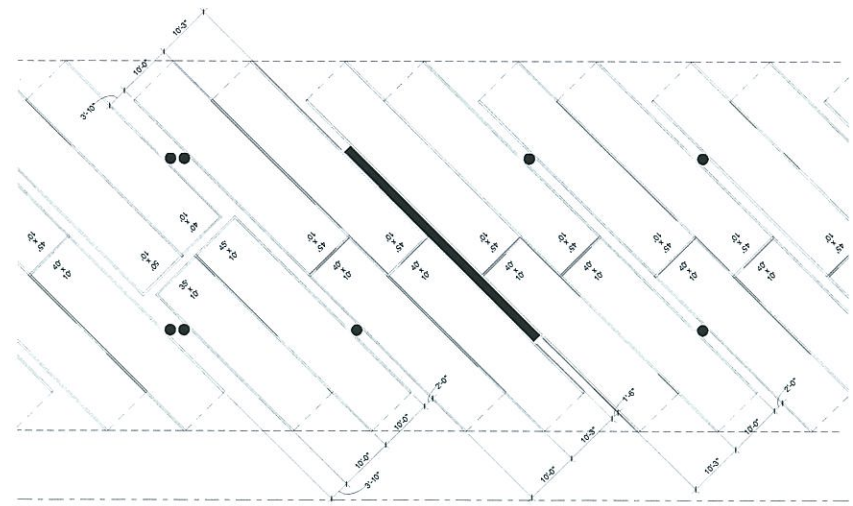
DATE:	04/17/12
PROJECT #:	Project Number
SCALE:	3/64" = 1'-0"
0	
NORTH	
SHEET #:	A101

FLOOR PLANS

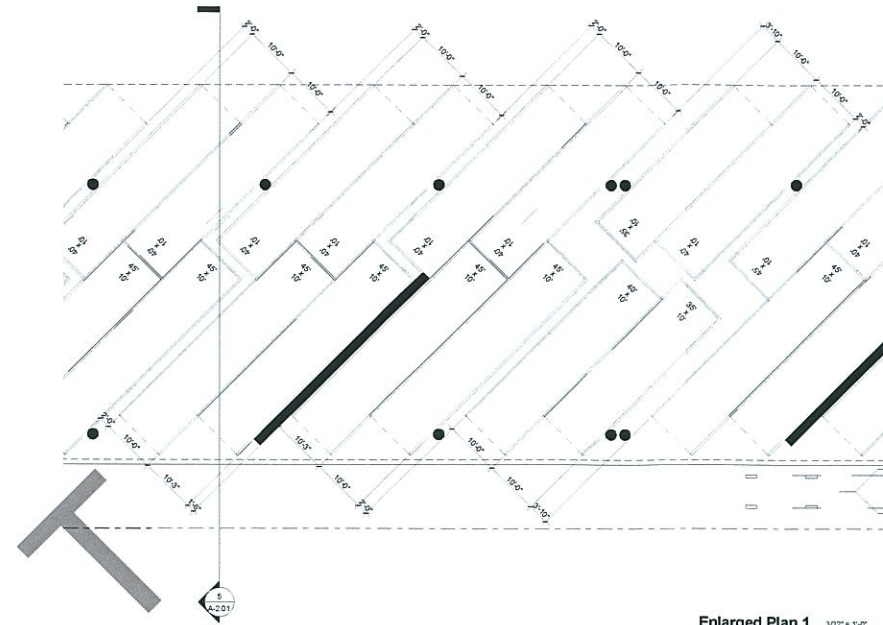
THIS DOCUMENT CONTAINS INFORMATION THAT IS UNCLASSIFIED, AND WHICH IS BEING RELEASED TO THE PUBLIC BY THE NATIONAL ARCHIVES AND RECORDS ADMINISTRATION. IT IS BEING RELEASED AS PART OF THE NATIONAL ARCHIVES' OPEN GLASS INITIATIVE. FOR MORE INFORMATION, VISIT US AT WWW.NATIONALARCHIVES.GOV.

MVE Institutional
Planning Architecture Interiors

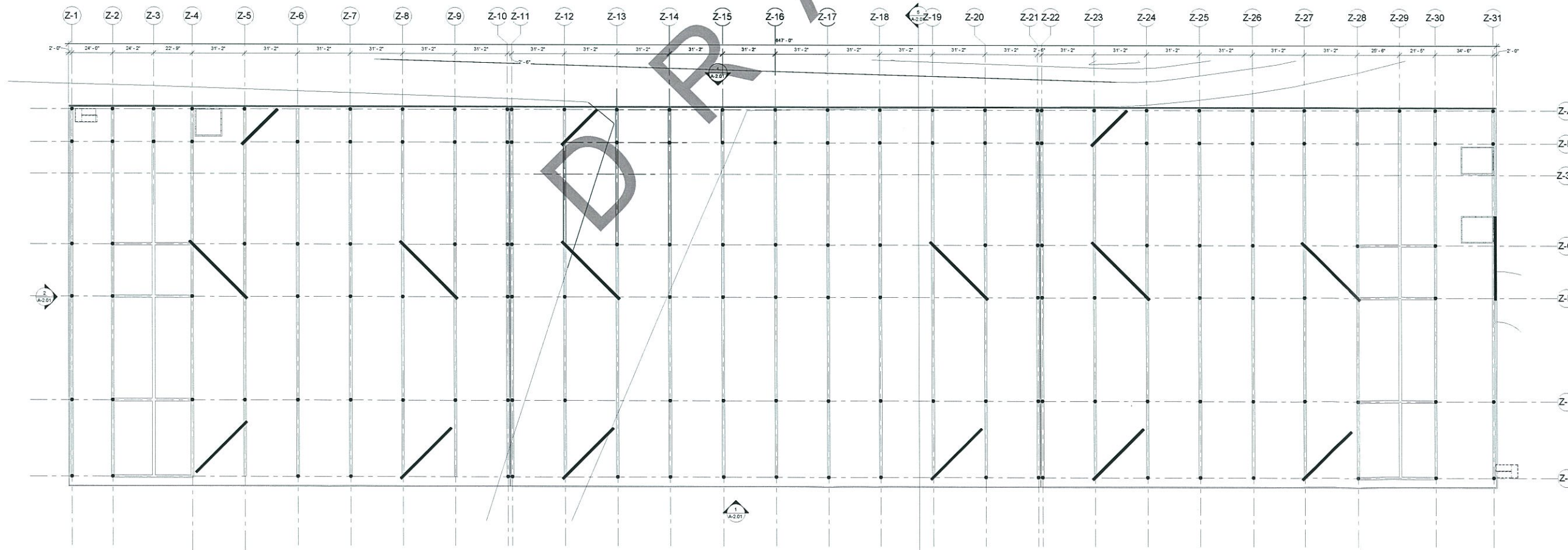
MVE Institutional, Inc.
1700 Main Street, Suite 200
Troy, NY 12182
Tel: 518.262.1100
www.mve.com



Enlarged Plan 2 3/32" = 1'-0" 3



Enlarged Plan 1 3/32" = 1'-0" 2



Level 1 3/64" = 1'-0" 1

DANA POINT HARBOR REVITALIZATION

COUNTY OF ORANGE
DANA POINT HARBOR DRIVE



DATE: 04/17/12
PROJECT #: Project Number
SCALE: As indicated

NORTH
SHEET #: A1.02

CEILING AND ENLARGED PLAN

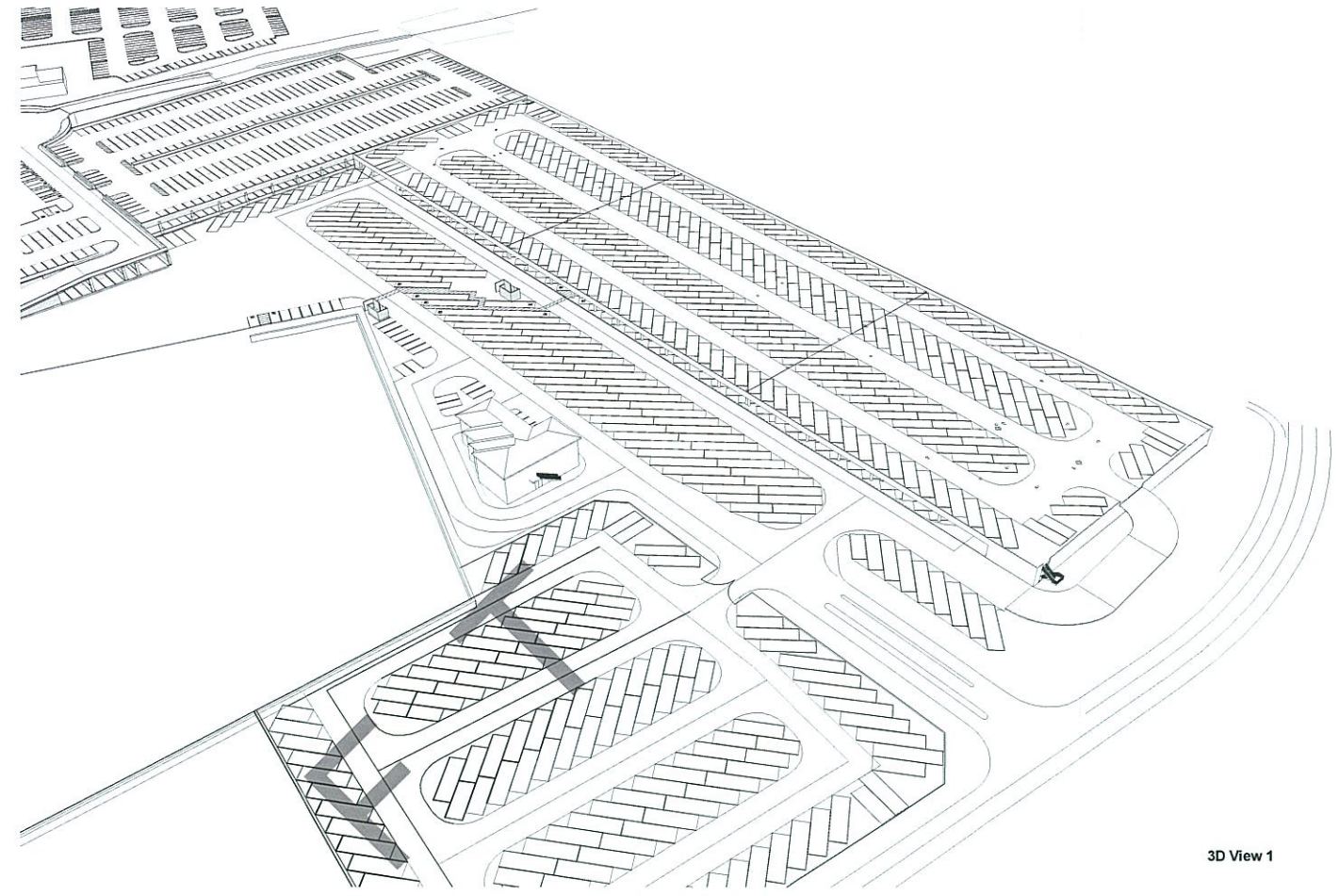
THIS DOCUMENT IS THE PROPERTY OF MVE INSTITUTIONAL, INC. AND IS TO BE USED ONLY FOR THE PROJECT AND SITE SPECIFICALLY IDENTIFIED HEREIN. ANY REUSE OR MODIFICATION OF THIS DOCUMENT WITHOUT THE WRITTEN PERMISSION OF MVE INSTITUTIONAL, INC. IS STRICTLY PROHIBITED.

MVE Institutional
Planning Architects Interiors

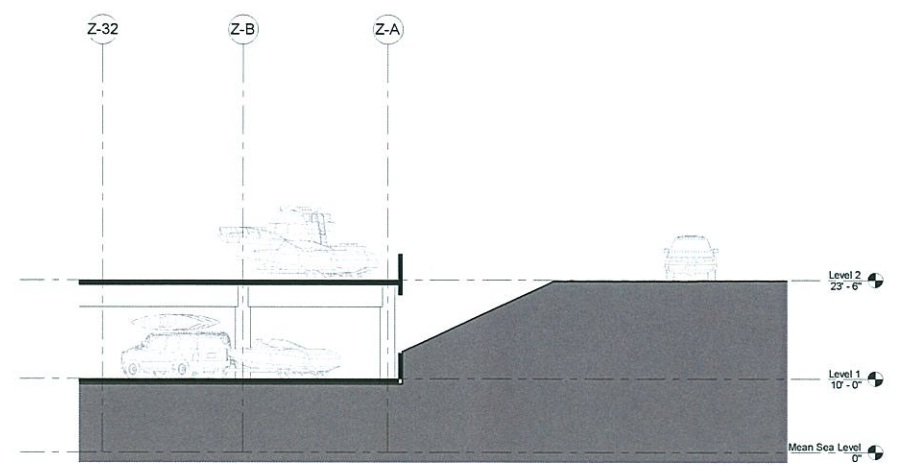
MVE Institutional, Inc.
1900 Main Street, Suite 400
Tustin, CA 92680
Tel: 714.261.1100
Fax: 714.261.1101
www.mve.com

DANA POINT HARBOR REVITALIZATION

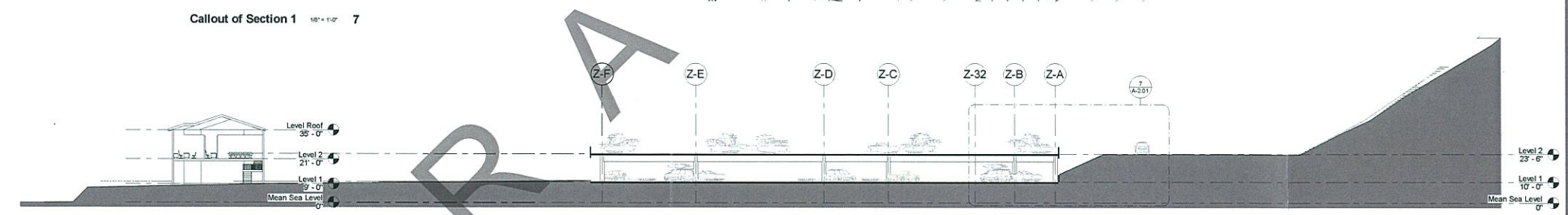
COUNTY OF ORANGE
DANA POINT HARBOR DRIVE



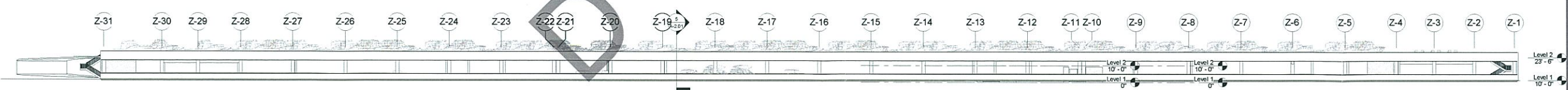
3D View 1 6



Callout of Section 1 1/8" = 1'-0" 7



Section 1 3/64" = 1'-0" 5

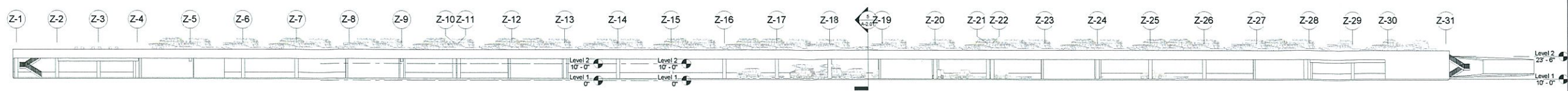


North 3/64" = 1'-0" 4



East 3/64" = 1'-0" 3

West 3/64" = 1'-0" 2



South 3/64" = 1'-0" 1

DATE:	04/17/12
PROJECT #:	Project Number
SCALE:	As indicated
0	
NORTH	
SHEET #:	A2.01

**ELEVATIONS
SECTIONS**

MVE Institutional
Planning Architecture Interiors

MVE Institutional, Inc.
1700 Main Street, Suite 100
Dana Point, CA 92629
Tel: 949.334.2222
Fax: 949.334.2222
www.mve.com

FIXTURE SCHEDULE																
ITEM	FITTURE	ROUGH-IN CONNECTIONS					DESCRIPTION	ITEM	FITTURE	ROUGH-IN CONNECTIONS					DESCRIPTION	
		TRAP	WASTE	VENT	HOT WATER	COLD WATER				GAS	TRAP	WASTE	VENT	HOT WATER		COLD WATER
TP 1	TRAP PRIMER (MULTIPLE DRAIN)	-	-	-	-	1/2"	-	OD 1	OVERFLOW DRAIN	-	-	-	-	-	-	ZURN NO. ZC-100-DR-89. CAST IRON BODY. COMPLETE WITH CAST IRON DOME STRAINER, UNDERDECK CLAMP, AND 2" HIGH WATER DAM.
FD 1	FLOOR DRAIN (SEDIMENT BUCKET)	3"	3"	1-1/2"	-	-	-	HB 1	HOSE BIBS (WALL)	-	-	-	-	3/4"	-	ACORN NO. 9121-CP "BENT NOSE WITH FLANGE" HOSE BIBS. WALL MOUNTED. CHROME-PLATED POLISHED, WITH INTEGRAL VACUUM BREAKER. LOOSE KEY OPERATOR.
RD 1	ROOF DRAIN	SEE PLAN FOR SIZES					-	-	-	-	-	-	-	-	-	ZURN NO. ZC-100-DR-C-R-84. CAST IRON BODY. COMPLETE WITH ADJUSTABLE EXTENSION SLEEVE, FLASHING COLLAR, STAINLESS STEEL GRAVEL STOP, CAST IRON DOME STRAINER, SUMP RECEIVER, AND UNDERDECK CLAMP.

LEGEND		
SYMBOL	ABBREVIATION	DESCRIPTION
---	S OR W	SOIL OR WASTE BELOW FLOOR OR GRADE
---	SD	STORM DRAIN ABOVE FLOOR
---	SD	STORM DRAIN BELOW FLOOR OR GRADE
---	OD	OVERFLOW DRAIN ABOVE FLOOR
-----	V	SANITARY VENT
---	CW	COLD WATER
---	TP	TRAP PRIMER
---	F	FIRE LINE
---	AS	AUTOMATIC SPRINKLER LINE
---		DIRECTION OF FLOW
⊘	SDV	SHUT-OFF VALVE
⊘	FCO	FLOOR CLEANOUT
⊘	WCO	WALL CLEANOUT
⊘		RISER UP
⊘		RISER DOWN
	ABV	ABOVE
	BEI	BELOW
	CLG	CEILING
	CONT	CONTINUATION
	COTG	CLEANOUT TO GRADE
	DN	DOWN
	EXIST	EXISTING
	FLR	FLOOR
	FFE	FINISH FLOOR ELEVATION
	IE	INVERT ELEVATION
	POC	POINT OF CONNECTION
	PLCS	PLACES
	SLVE	SLEEVE
	VTR	VENT THRU ROOF
	YB	YARD BOX

DRAFT

DANA POINT HARBOR REVITALIZATION

COUNTY OF ORANGE
DANA POINT HARBOR DRIVE




B.P. & Associates, Inc.
 Consulting Engineers
 2 Irvine Canyon, Suite 100
 Irvine, California 92618
 Telephone: (949) 452-3988
 Fax: (949) 452-3988

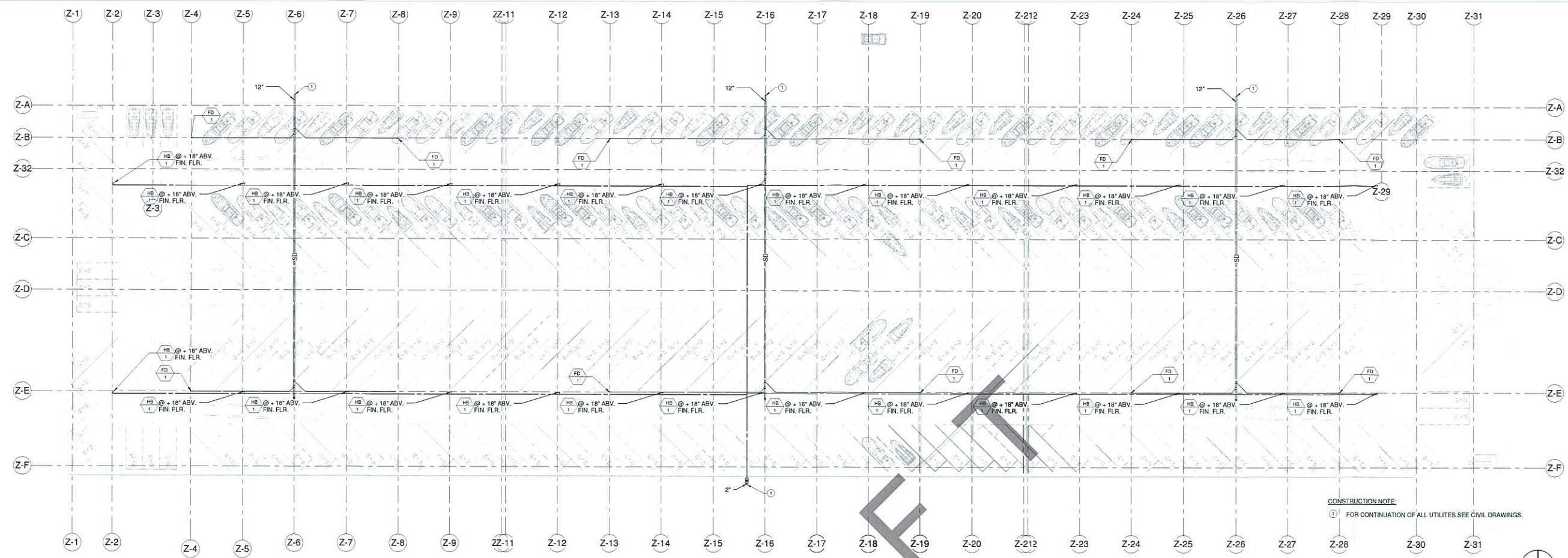
DATE: _____ Issue Date
 PROJECT #: _____ Project Number
 SCALE: _____
 0 _____
 NORTH 
 SHEET #: P-001

**PLUMB. LEG.,
 SCHEDULES,
 AND GEN.
 NOTES**

THE USER OF THESE DRAWINGS AND SPECIFICATIONS IS SO NOTICED, AND THE USER OF THESE DRAWINGS AND SPECIFICATIONS IS SO NOTICED, THAT THE USER OF THESE DRAWINGS AND SPECIFICATIONS IS SO NOTICED, AND THE USER OF THESE DRAWINGS AND SPECIFICATIONS IS SO NOTICED.

MVE Institutional
 Planning Architecture Interiors

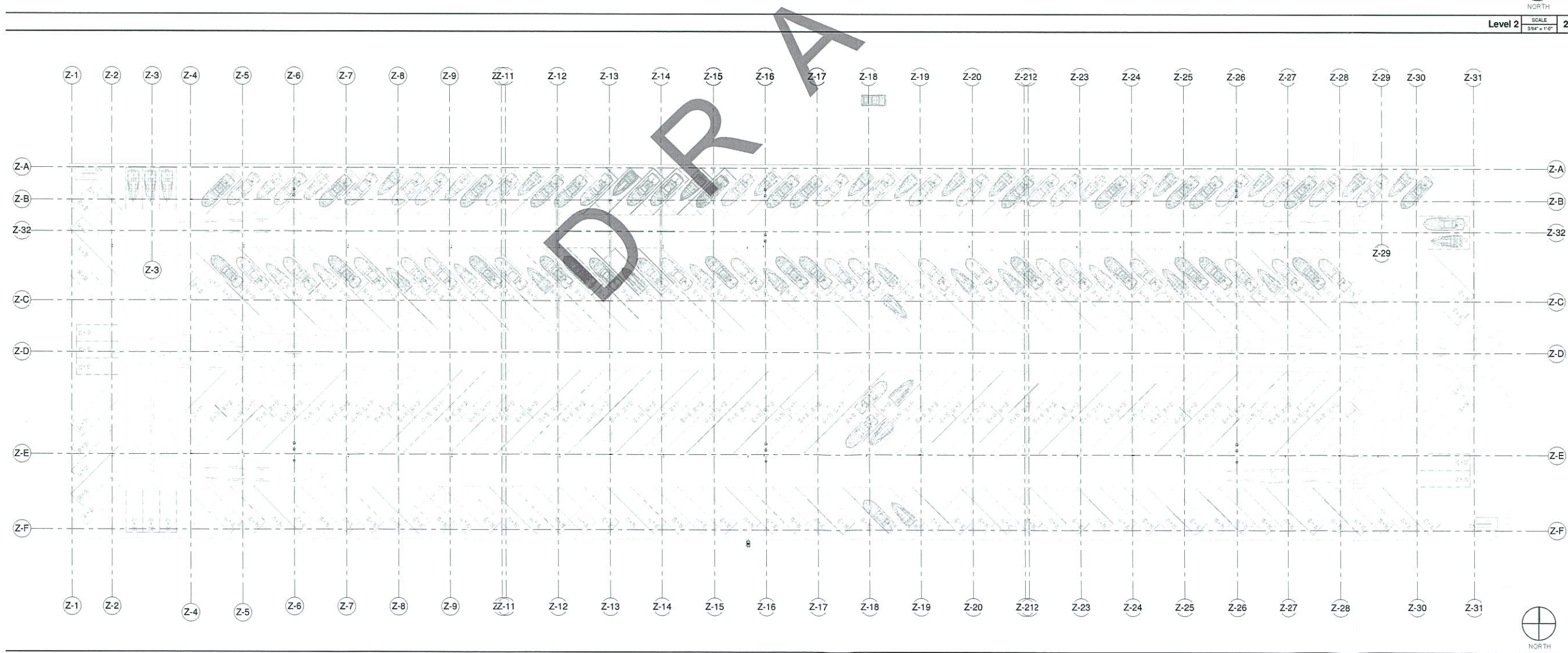
MVE Institutional, Inc.
 1900 Main Street, Suite 800
 Irvine, CA 92614
 (949) 452-3340 (949) 452-3341
 (949) 452-3341 (949) 452-3341
 www.mve-architecture.com



DANA POINT HARBOR REVITALIZATION
 COUNTY OF ORANGE
 DANA POINT HARBOR DRIVE



Level 2
 SCALE 3/8" = 1'-0" 2



DATE: _____ Issue Date
 PROJECT #: _____ Project Number
 SCALE: 3/8" = 1'-0"
 NORTH
 SHEET #: P201

**PLUMBING
 FLOOR PLANS**

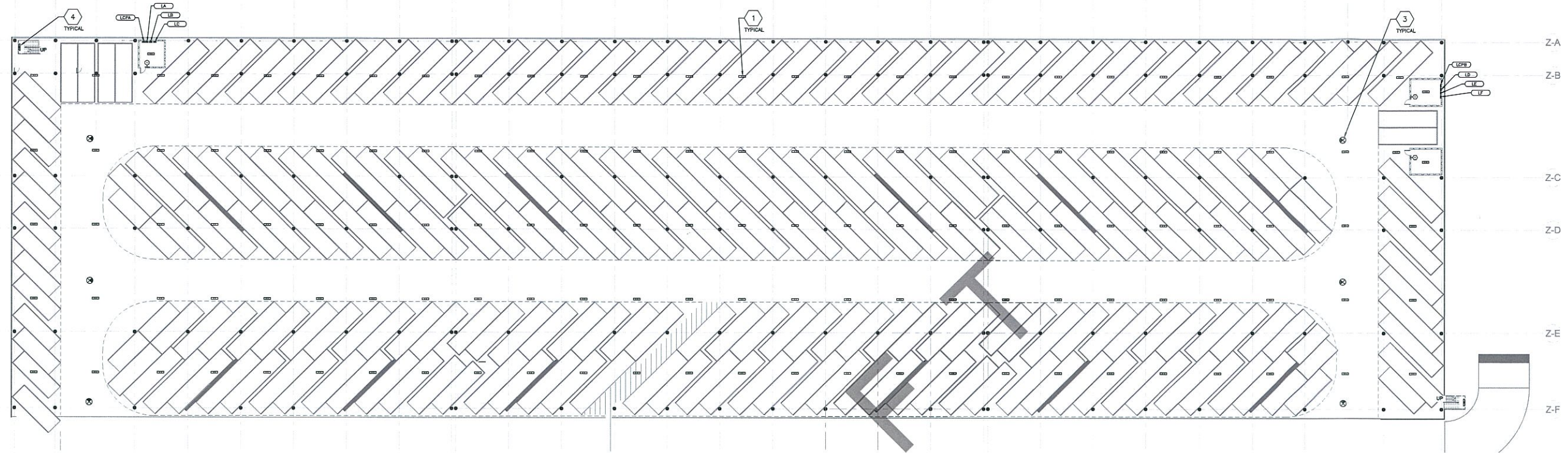
THIS DOCUMENT CONTAINS CONFIDENTIAL INFORMATION AND IS THE PROPERTY OF MVE INSTITUTIONAL, INC. NO PART OF THIS DOCUMENT IS TO BE REPRODUCED OR TRANSMITTED IN ANY FORM OR BY ANY MEANS, ELECTRONIC OR MECHANICAL, INCLUDING PHOTOCOPYING, RECORDING, OR BY ANY INFORMATION STORAGE AND RETRIEVAL SYSTEM, WITHOUT THE WRITTEN PERMISSION OF MVE INSTITUTIONAL, INC. ALL RIGHTS ARE RESERVED. © 2014 MVE INSTITUTIONAL, INC.

MVE Institutional
 Planning Architecture Interiors

MVE Institutional, Inc.
 1700 Main Street, Suite 400
 Irvine, CA 92614
 Tel: 949.450.2145 Fax: 949.450.2341
 www.mve.com

Level 1
 SCALE 3/8" = 1'-0" 1

Z-1 Z-2 Z-3 Z-4 Z-5 Z-6 Z-7 Z-8 Z-9 Z-10 Z-11 Z-12 Z-13 Z-14 Z-15 Z-16 Z-17 Z-18 Z-19 Z-20 Z-21 Z-22 Z-23 Z-24 Z-25 Z-26 Z-27 Z-28 Z-29 Z-30 Z-31



LIGHTING PLAN - LEVEL 1
SCALE: 3/64" = 1'-0"

DRAFT

LIGHTING PLAN GENERAL NOTES:

1. REFER TO ARCHITECTURAL PLANS FOR EXACT LOCATION & ELEVATION OF ALL LIGHTING FIXTURES AND ALL DEVICES. ALL WALL-MOUNTED DEVICE HEIGHTS SHALL BE VERIFIED WITH THE ARCHITECT PRIOR TO ROUGH-IN.
2. VERIFY EXACT CEILING CONSTRUCTION WITH ARCHITECTURAL REFLECTED CEILING PLAN AND PROVIDE LIGHTING FIXTURES WITH ALL NECESSARY MOUNTING HARDWARE.
3. ALL RECESSED FIXTURES SHALL BE PROVIDED WITH ALL REQUIRED STRUCTURAL SUPPORTS AS REQUIRED BY THE CURRENTLY ADOPTED ISSUE OF THE BC, OR CBC WHERE ADOPTED, IN ADDITION TO ANY LOCAL CODES.
4. ALL COVE MOUNTED FIXTURES SHALL EXTEND THE FULL LENGTH OF THE COVE. CONTRACTOR TO FIELD MEASURE COVE LENGTH AND ORDER QUANTITY OF FIXTURES AS REQUIRED.
5. ALL DIMMING BRANCH CIRCUITS SHALL BE PROVIDED WITH A DEDICATED NEUTRAL CONDUCTOR FOR EACH ZONE/CHANNEL.
6. ALL FLUORESCENT DIMMING ZONES/CHANNELS SHALL BE PROVIDED WITH 3 LINE VOLTAGE CONDUCTORS (NEUTRAL, DIMMED HOT, SWITCHED HOT) OR 2 LINE VOLTAGE CONDUCTORS/2 CONTROL CONDUCTORS AS REQUIRED BY THE CONTROL/BALLAST TYPE.
7. ALL EMERGENCY BATTERY PACK FIXTURES SHALL BE PROVIDED WITH A CONSTANT HOT CONNECTION TO THE CHANGING LEAD. SEE GENERAL LIGHTING FIXTURE SCHEDULE NOTES FOR MORE INFORMATION.
8. REFER TO ARCHITECTURAL REFLECTED CEILING PLANS FOR EXIT SIGN CHEVRONS AND NUMBER OF FACES PER EXIT SIGN. ANY DISCREPANCIES BETWEEN EXIT SIGNS SHOWN ON THE ELECTRICAL AND ARCHITECTURAL PLANS SHALL BE BROUGHT TO THE ATTENTION OF THE ARCHITECT PRIOR TO ORDERING EXIT SIGNS.
9. WHEN EXPOSED CEILING OR OPEN GRID CONDITIONS OCCUR, THE CONTRACTOR WILL NEED TO PROVIDE THE FOLLOWING ITEMS:
- ALL BRANCH CIRCUITS SHALL BE IN EMT.
- ALL BRANCH CIRCUITS SHALL BE ROUTED NEATLY TRAINED AND IN PARALLEL TO STRUCTURES OR DUCT WORK. THE TERM "TRAINED" MEANS ALL PARALLEL CONDUITS SHALL MAINTAIN THE SAME SPATIAL RELATIONSHIP WITH EACH OTHER FOR ENTIRE RUN TO INCLUDE RIGID BENDS AND SWEEPS.
VISUALLY OBJECTIONABLE BRANCH CIRCUITS WILL BE REROUTED AT THE REQUEST OF THE ARCHITECT AT NO ADDITIONAL COST.
10. ALL LED REMOTE INDICATORS FOR DUCT DETECTORS AND FIRE/SMOKE DAMPERS REQUIRED BY THE LOCAL AHJ SHALL BE LOCATED IN CEILING IN COORDINATION WITH ARCHITECT PRIOR TO ANY ROUGH-IN.
11. RECESSED FIXTURES LOCATED IN A FIRE-RATED CEILING OR WALL SHALL BE PROVIDED WITH A 5-SIDED RATED ENCLOSURE SO CONSTRUCTED AS TO ALLOW CODE AND MANUFACTURER-REQUIRED CLEARANCES BETWEEN THE FIXTURE AND THE ENCLOSURE.
12. UNLESS SPECIFICALLY SHOWN AS (E), (F), (ER), (D), EXISTING OR NON-BOLD, ALL ELECTRICAL DEVICES SHOWN ARE NEW.
13. REFER TO GENERAL POWER PLAN NOTES AND COMMUNICATIONS PAYMENTS GENERAL NOTES FOR ADDITIONAL REQUIREMENTS WITH POWER AND/OR DATA DEVICES ARE SHOWN ON THIS PLAN.

PLAN NOTES:

1. --

DANA POINT HARBOR REVITALIZATION

COUNTY OF ORANGE
DANA POINT HARBOR DRIVE



K
1000 E. Walnut Ave. - Suite 404, CA 92708
(714) 898-4200 • (714) 898-4210 Fax
www.mveinst.com
JOHN LEONHART



DATE:	Issue Date
PROJECT #:	Project Number
SCALE:	AS NOTED
0	
NORTH	
SHEET #:	E-201

PARKING GARAGE LVL 1 LIGHTING PLAN

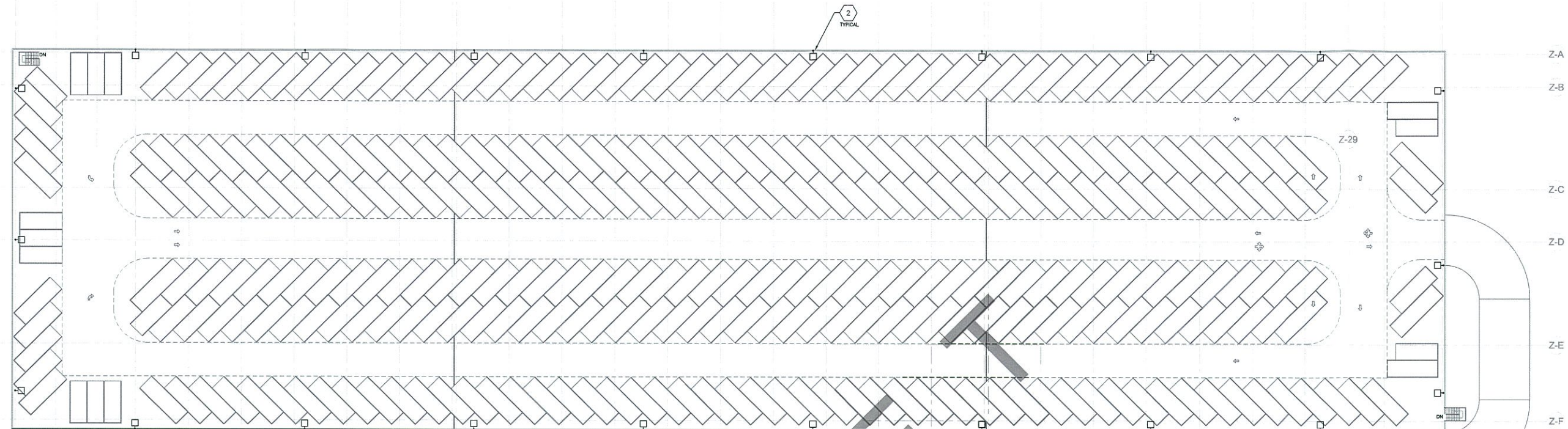
THIS DOCUMENT CONTAINS INFORMATION PROPRIETARY TO MVE INSTITUTIONAL, INC. AND IS INTENDED TO BE USED ONLY FOR THE PROJECT AND SITE SPECIFICALLY IDENTIFIED HEREIN. IT IS NOT TO BE REPRODUCED OR TRANSMITTED IN ANY FORM OR BY ANY MEANS, ELECTRONIC OR MECHANICAL, INCLUDING PHOTOCOPYING, RECORDING, OR BY ANY INFORMATION STORAGE AND RETRIEVAL SYSTEM, WITHOUT THE WRITTEN PERMISSION OF MVE INSTITUTIONAL, INC. ALL RIGHTS RESERVED. © COPYRIGHT 2016

MVE Institutional
Pioniering. Analtitiziere. Iobiziere

MVE Institutional Inc.
1700 Main Street, Suite 400
Costa Mesa, California 92626
Tel: 714.898.4200 • Fax: 714.898.4210
www.mveinst.com

P11100 - Dana Point Harbor03 Parking Garage Lvl 1 Lighting Plan.dwg, 11/20/16 11:03:14 AM, E:521, 11/20/16 11:03:14 AM, Worksheet: 11

Z-1 Z-2 Z-3 Z-4 Z-5 Z-6 Z-7 Z-8 Z-9 Z-10 Z-11 Z-12 Z-13 Z-14 Z-15 Z-16 Z-17 Z-18 Z-19 Z-20 Z-21 Z-22 Z-23 Z-24 Z-25 Z-26 Z-27 Z-28 Z-29 Z-30 Z-31



LIGHTING PLAN - LEVEL 2
SCALE: 3/8" = 1'-0"

DRAFT

LIGHTING PLAN GENERAL NOTES:

1. REFER TO ARCHITECTURAL PLANS FOR EXACT LOCATION & ELEVATION OF ALL LIGHTING FIXTURES AND ALL DEVICES. ALL WALL-MOUNTED DEVICE HEIGHTS SHALL BE VERIFIED WITH THE ARCHITECT PRIOR TO ROUGH-IN.
2. VERIFY EXACT CEILING CONSTRUCTION WITH ARCHITECTURAL REFLECTED CEILING PLAN AND PROVIDE LIGHTING FIXTURES WITH ALL NECESSARY MOUNTING HARDWARE.
3. ALL RECESSED FIXTURES SHALL BE PROVIDED WITH ALL REQUIRED STRUCTURAL SUPPORTS AS REQUIRED BY THE CURRENTLY ADOPTED ISSUE OF THE IBC, OR CBC WHERE ADOPTED, IN ADDITION TO ANY LOCAL CODES.
4. ALL COVE MOUNTED FIXTURES SHALL EXTEND THE FULL LENGTH OF THE COVE. CONTRACTOR TO FIELD MEASURE COVE LENGTH AND ORDER QUANTITY OF FIXTURES AS REQUIRED.
5. ALL DIMMING BRANCH CIRCUITS SHALL BE PROVIDED WITH A DEDICATED NEUTRAL CONDUCTOR FOR EACH ZONE/CHANNEL.
6. ALL FLUORESCENT DIMMING ZONES/CHANNELS SHALL BE PROVIDED WITH 3 LINE VOLTAGE CONDUCTORS (NEUTRAL DIMMED HOT SWITCHED HOT) OR 2 LINE VOLTAGE CONDUCTORS/2 CONTROL CONDUCTORS AS REQUIRED BY THE CONTROL/BALLAST TYPE.
7. ALL EMERGENCY BATTERY PACK FIXTURES SHALL BE PROVIDED WITH A CONSTANT HOT CONNECTION TO THE CHARGING LEAD. SEE GENERAL LIGHTING FIXTURE SCHEDULE NOTES FOR MORE INFORMATION.
8. REFER TO ARCHITECTURAL REFLECTED CEILING PLANS FOR EXIT SIGN CHEVRONS AND NUMBER OF FACES PER EXIT SIGN. ANY DISCREPANCIES BETWEEN EXIT SIGNS SHOWN ON THE ELECTRICAL AND ARCHITECTURAL PLANS SHALL BE BROUGHT TO THE ATTENTION OF THE ARCHITECT PRIOR TO ORDERING EXIT SIGNS.
9. WHEN EXPOSED CEILING OR OPEN GRID CONDITIONS OCCUR, THE CONTRACTOR WILL NEED TO PROVIDE THE FOLLOWING ITEMS:
-- ALL BRANCH CIRCUITS SHALL BE IN EXT.
-- ALL BRANCH CIRCUITS SHALL BE ROUTED NEATLY TRAINED AND IN PARALLEL TO STRUCTURES OR DUCT WORK. THE TERM "TRAINED" MEANS ALL PARALLEL CONDUITS SHALL MAINTAIN THE SAME SPATIAL RELATIONSHIP WITH EACH OTHER FOR ENTIRE RUN TO INCLUDE RADIUS BENDS AND SWEEPS.
VISUALLY OBSTRUCTIONABLE BRANCH CIRCUITS WILL BE REROUTED AT THE REQUEST OF THE ARCHITECT AT NO ADDITIONAL COST.
10. ALL LED REMOTE INDICATORS FOR DUCT DETECTORS AND FIRE/SMOKE DAMPERS REQUIRED BY THE LOCAL AHJ SHALL BE LOCATED IN CEILING IN COORDINATION WITH ARCHITECT PRIOR TO ANY ROUGH-IN.
11. RECESSED FIXTURES LOCATED IN A FIRE-RATED CEILING OR WALL SHALL BE PROVIDED WITH A 5-SECOND RATED ENCLOSURE TO CONSTRUCTED AS TO ALLOW CODE AND MANUFACTURER-REQUIRED CLEARANCES BETWEEN THE FIXTURE AND THE ENCLOSURE.
12. UNLESS SPECIFICALLY SHOWN AS (E), (F), (EX), (D), EXISTING OR NON-BOLD, ALL ELECTRICAL DEVICES SHOWN ARE NEW.
13. REFER TO GENERAL POWER PLAN NOTES AND COMMUNICATIONS PATHWAYS GENERAL NOTES FOR ADDITIONAL REQUIREMENTS WHEN POWER AND/OR DATA DEVICES ARE SHOWN ON THIS PLAN.

PLAN NOTES:

1-

DANA POINT HARBOR REVITALIZATION

COUNTY OF ORANGE
DANA POINT HARBOR DRIVE



K
K&K ELECTRICAL
18821 Warner Ave • Dana Point, CA 92629
(714) 866-4320 • (714) 866-4216 Fax
www.kandkelectrical.com
JOHN LEONHART



DATE:	Issue Date
PROJECT #:	Project Number
SCALE:	AS NOTED
0	
NORTH	
SHEET #:	E-202

**PARKING GARAGE LVL 2
LIGHTING PLAN**

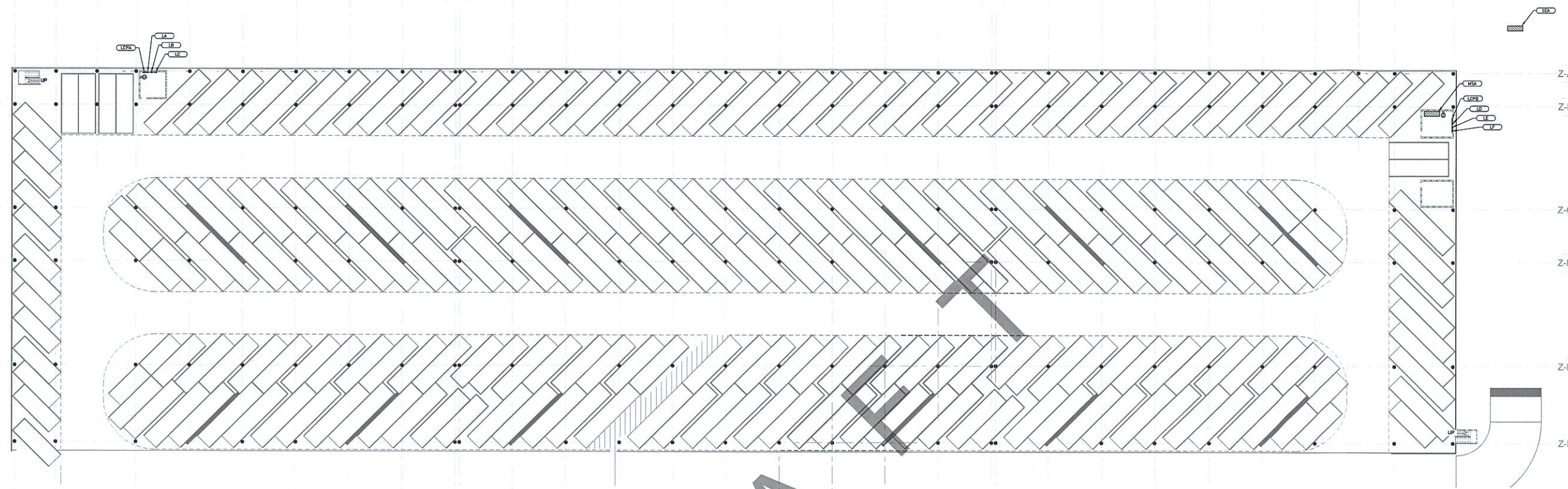
THIS DOCUMENT CONTAINS INFORMATION PROPRIETARY TO MVE INSTITUTIONAL, INC. AND IS SUBJECT TO THE TERMS AND CONDITIONS OF THE AGREEMENT OF SERVICES. ANY REPRODUCTION OR TRANSMISSION OF THIS DOCUMENT WITHOUT THE WRITTEN PERMISSION OF MVE INSTITUTIONAL, INC. IS STRICTLY PROHIBITED. ALL RIGHTS RESERVED. © 2015 MVE INSTITUTIONAL, INC.

MVE Institutional
Pioneering Smart Solutions for the Future

MVE Institutional, Inc.
1700 Main Street, Suite 400
Dana Point, CA 92629
Tel: 714.866.4320 • Fax: 714.866.4216
www.mveinstitutional.com

P:\11506 - Dana Point Harbor\03\Tasking\Doc\00111506-03-2311-0202.dwg, E:\03_4\11506\11506.dwg, 1:1

Z-1 Z-2 Z-3 Z-4 Z-5 Z-6 Z-7 Z-8 Z-9 Z-10 Z-11 Z-12 Z-13 Z-14 Z-15 Z-16 Z-17 Z-18 Z-19 Z-20 Z-21 Z-22 Z-23 Z-24 Z-25 Z-26 Z-27 Z-28 Z-29 Z-30 Z-31



DANA POINT HARBOR REVITALIZATION
 COUNTY OF ORANGE
 DANA POINT HARBOR DRIVE



DRAWING

POWER PLAN - LEVEL 1
 SCALE: 3/64" = 1'-0"

1

COMMUNICATIONS PATHWAYS
GENERAL NOTES:

1. CONDUITS SHALL (a) CONTAIN NO CONTINUOUS SECTIONS LONGER THAN 30M (98 FT.), AND, (b) CONTAIN NO MORE THAN (2) 90° BENDS OR (1) REVERSE BEND WITHOUT INSTALLING A PULLBOX. CONDUITS IN PLACE OF PULLBOXES ARE UNACCEPTABLE.
2. CONDUITS SHALL CONTAIN PLASTIC OR NYLON PULL TAPE RATED AT 200 LBS. WITH A MINIMUM OF 5 FEET OF EXTRA PULL TAPE COILED AT EACH END.
3. CONDUIT BEND RADIUS SHALL BE (a) A MINIMUM OF 6 TIMES THE INTERNAL CONDUIT DIAMETER FOR CONDUITS 2" IN DIAMETER OR LESS, AND, (b) 10 TIMES THE INTERNAL CONDUIT DIAMETER FOR CONDUITS MORE THAN 2" IN DIAMETER.
4. TERMINATE CONDUITS AND SLEEVES THAT PROTRUDE THROUGH STRUCTURAL FLOORS 2"-3" ABOVE THE FLOOR SURFACE.
5. INSTALL BUSHINGS AND BELL ENDS AS REQUIRED ON ALL CONDUITS.
6. FLEX CONDUIT IS GENERALLY UNACCEPTABLE FOR USE AS A COMMUNICATIONS CONDUIT EXCEPT AT SEISMIC JOINTS AND AS APPROVED IN WRITING BY THE ENGINEER.
7. ALL UNDER SLAB OR IN-SLAB CONDUITS SHALL BE INSTALLED IN A MANNER THAT PREVENTS WATER INFILTRATION OF THE CONDUIT. IT IS THE CONTRACTOR'S RESPONSIBILITY TO ENSURE GROUND WATER, RAIN WATER OR CONSTRUCTION WATER IS PREVENTED FROM ENTERING AND/OR REMOVED FROM THE CONDUITS PRIOR TO PLACEMENT OF COMMUNICATIONS CABLES. SEE SITE UTILITY PLAN NOTES FOR ADDITIONAL UNDERGROUND COMMUNICATIONS CONDUIT SEALING REQUIREMENTS.
8. ALL PULLBOXES SHALL BE SIZED AND INSTALLED PER ANSI/TIA/EIA-569B. PULLBOXES FOR UNDER FLOOR CONDUIT RUNS ARE NOT PERMITTED UNLESS OTHERWISE NOTED. PULLBOXES FOR OVERHEAD CONDUIT RUNS SHALL BE LOCATED ABOVE ACCESSIBLE CEILING WITHIN THE ACCESSIBLE CEILING SPACE AND SUPPORTED INDEPENDENTLY FROM THE STRUCTURE AND CONDUIT SUPPORTS. PULLBOXES FOR ROOF MOUNTED OR EXTERIOR ABOVE GRADE APPLICATIONS SHALL BE NEMA 3 RATED. PULLBOXES SHALL BE SIZED ACCORDING TO THE FOLLOWING:

CONDUIT SIZE	WIDTH	LENGTH	DEPTH	WIDTH INCREASE PER ADDITIONAL CONDUIT
1"	4"	18"	3"	2"
2"	8"	36"	4"	5"
3"	12"	54"	5"	8"
4"	16"	72"	6"	10"

- FOR OTHER CONDUIT SIZES REFER TO ANSI/TIA/EIA 569B TABLE 12 - LATEST PUBLISHED EDITION.
9. CONDUIT(S) SHALL EXIT A PULLBOX ON THE WALL OPPOSITE THE WALL ENTERED.
 10. PROVIDE LABELING OF EACH CONDUIT PER GENERAL ELECTRICAL SPECIFICATIONS.
 11. PROVIDE INTERNAL/EXTERNAL GAS AND WATER TIGHT MECHANICAL SEALING/PLUGGING OF EACH BUILDING ENTRY CONDUIT AS SPECIFIED ELSEWHERE IN THE DRAWINGS AND SPECIFICATIONS.

POWER PLAN GENERAL NOTES:

1. ALL RECEPTACLES ON COMMON WALLS SHALL BE SEPARATE BOXES AND OFFSET 24" MINIMUM.
2. ALL PENETRATIONS THROUGH FIRE RATED WALLS SHALL BE PROTECTED FROM THE SPREAD OF FIRE WITH AN APPROVED FIRESTOP SYSTEM EQUAL OR GREATER THAN THE FIRE RATING OF THE WALL.
3. ALL WALL-MOUNTED DEVICE HEIGHTS SHALL BE VERIFIED WITH THE ARCHITECT PRIOR TO ROUGH-IN.
4. ALL FURNITURE FEED LOCATIONS TO BE VERIFIED WITH ARCHITECT AND FURNITURE VENDOR PRIOR TO ROUGH-IN.
5. ALL FURNITURE WHIPS SHALL BE TRIMMED TO REDUCE EXCESS WHIP LENGTH.
6. WHEN EXPOSED CEILING OR OPEN GRID CONDITIONS OCCUR, THE CONTRACTOR WILL NEED TO PROVIDE THE FOLLOWING ITEMS:
 --ALL BRANCH CIRCUITS SHALL BE IN EXT.
 --ALL BRANCH CIRCUITS SHALL BE ROUTED NEATLY AND IN PARALLEL TO STRUCTURES OR DUCT WORK.
 VISUALLY OBJECTIONABLE BRANCH CIRCUITS SHALL BE REROUTED AT THE REQUEST OF THE ARCHITECT AT NO ADDITIONAL COST.
7. EXPOSED CABLE/CONDUITS INSTALLED IN A PLENUM SPACE SHALL CONFORM TO NEC, OR EEC, WHERE ADOPTED, ARTICLE 300.22(C).
8. PROVIDE G.F.C.I. TYPE RECEPTACLE(S) WITHIN 6 FEET OF ANY SINK OR THERAPEUTIC TUB, SERVING ANY DRINKING FOUNTAIN OR VENDING MACHINE, AND WITHIN ANY KITCHEN SPACE.
9. UNLESS SPECIFICALLY SHOWN AS (E), (I), (E), (I), (E), (I), EXISTING OR NON-BUILD, ALL ELECTRICAL DEVICES SHOWN ARE NEW.

PLAN NOTES:

1) ?????



DATE:	Issue Date
PROJECT #:	Project Number
SCALE:	AS NOTED
0	
NORTH	
SHEET #:	E-301

PARKING GARAGE LVL 1 POWER PLAN

THIS DOCUMENT CONTAINS PROPRIETARY INFORMATION OF MVE INSTITUTIONAL, INC. AND IS THE PROPERTY OF MVE INSTITUTIONAL, INC. IT IS TO BE USED ONLY FOR THE PROJECT AND SITE SPECIFICALLY IDENTIFIED IN THE TITLE BLOCK. ANY REUSE OR REPRODUCTION OF THIS DOCUMENT WITHOUT THE WRITTEN PERMISSION OF MVE INSTITUTIONAL, INC. IS STRICTLY PROHIBITED.

MVE Institutional
 Planning. Architecture. Interiors.

MVE Institutional, Inc.
 1700 Main Street, Suite 400
 Irvine, CA 92614-1700
 714.261.2300 • 714.261.2321
 www.mve-architects.com

P11109 - Dana Point Harbor 03 Parking Garage Lvl 1 Power Plan.dwg, 6/20/2012 4:13:37 PM, Worksheet: 1/1