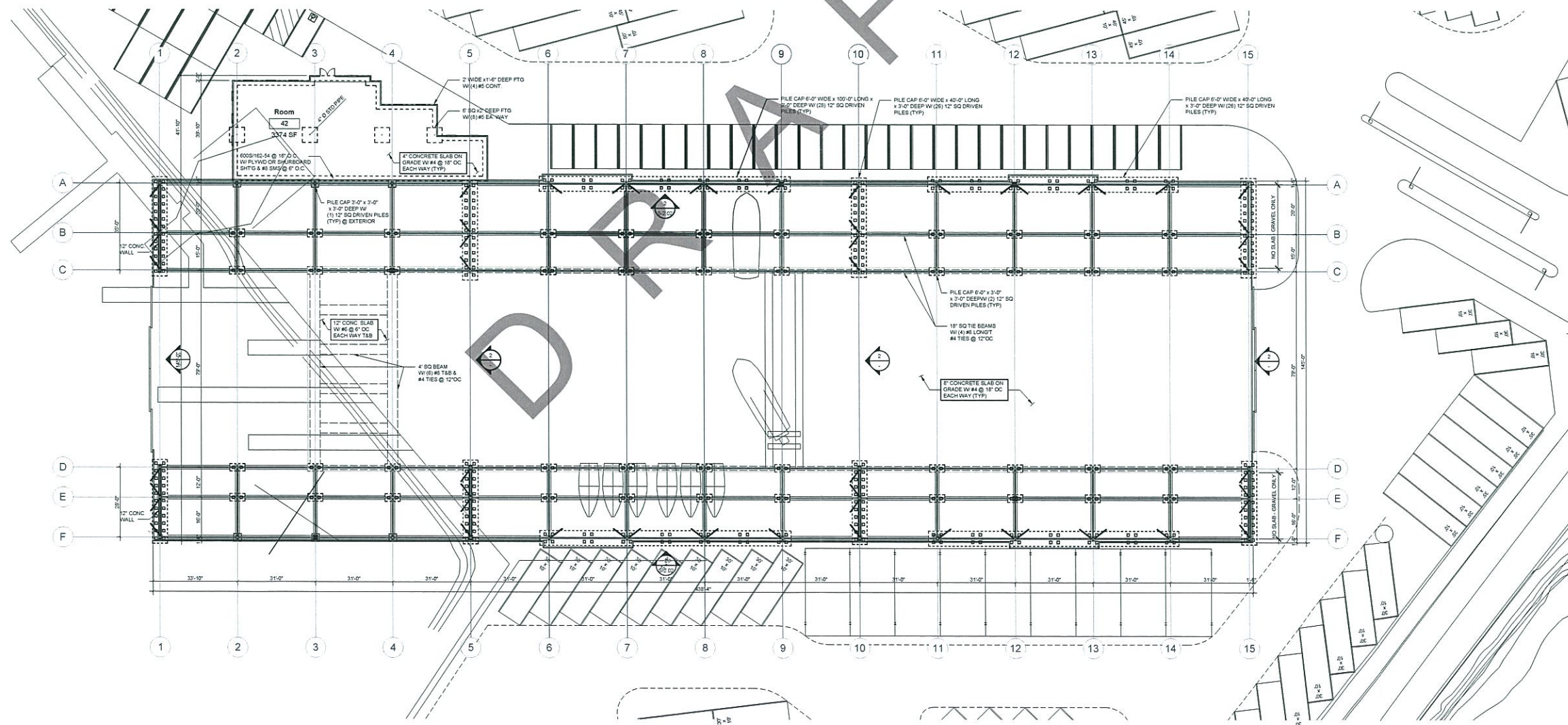


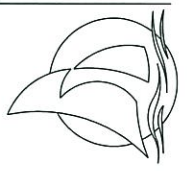
Frame Elevation 100% 2



Foundation Plan 100% 1

DANA POINT HARBOR REVITALIZATION

COUNTY OF ORANGE
DANA POINT HARBOR DRIVE



DATE:	Issue Date
PROJECT #:	Project Number
SCALE:	1/8" = 1'-0"
<p>NORTH</p>	
<p>SHEET #:</p>	

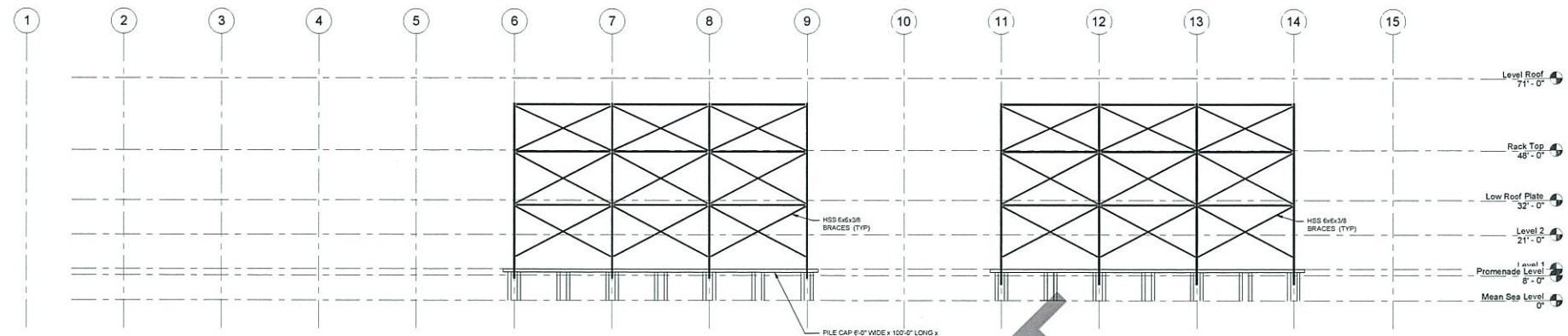
**Foundation Plan/
Elevation**

THESE DOCUMENTS AND THE INFORMATION CONTAINED HEREIN ARE THE PROPERTY OF MVE INSTITUTIONAL, INC. AND ARE TO BE USED ONLY FOR THE PROJECT AND SITE SPECIFICALLY IDENTIFIED HEREIN. ANY REUSE OR MODIFICATION OF THESE DOCUMENTS WITHOUT THE WRITTEN PERMISSION OF MVE INSTITUTIONAL, INC. IS STRICTLY PROHIBITED.

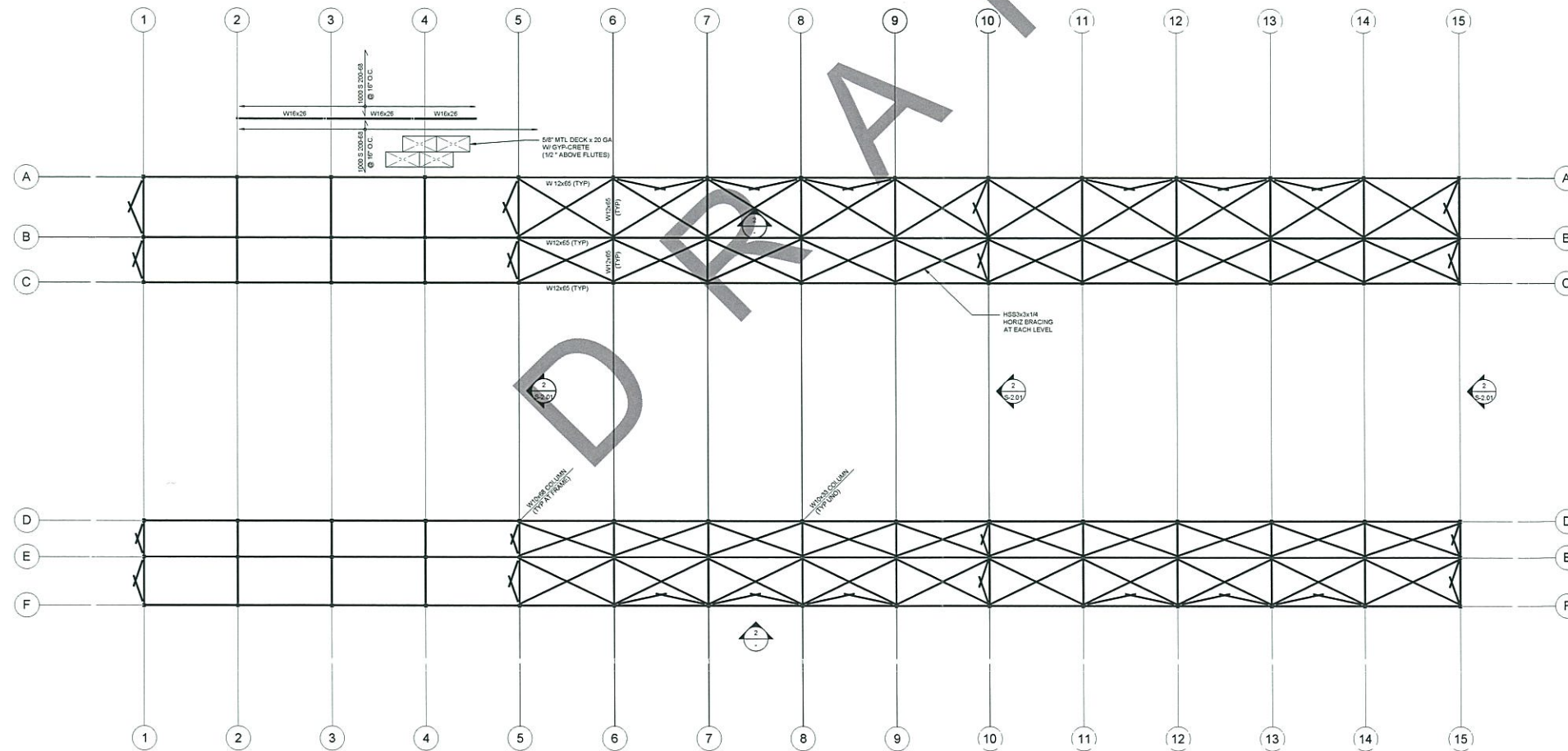
MVE Institutional
Planning. Architecture. Interiors.

MVE INSTITUTIONAL, INC.
1700 Main Street, Suite 400
Costa Mesa, CA 92626
Tel: 949.440.3300 Fax: 949.440.3301
www.mveinstitutional.com

Date: 04/11/2024 10:24 AM - Drawing: 170000000101010101 - Drawn: MVE Institutional/04/11/2024 10:24 AM - User: SLD/1 - Edited By: MVE Institutional/04/11/2024 10:24 AM - Job Name: Dana Point Harbor - PM: BT - PD: ELC
 File: 170000000101010101.dwg - Project Path: C:\Users\SLD\OneDrive - MVE Institutional\Documents\170000000101010101\170000000101010101.dwg



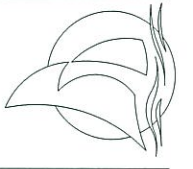
Frame Elevation 1/16" = 1'-0" 2



Typical Floor Framing Plan 1/16" = 1'-0" 1

DANA POINT HARBOR REVITALIZATION

COUNTY OF ORANGE
DANA POINT HARBOR DRIVE



DATE: _____ Issue Date
PROJECT #: _____ Project Number
SCALE: 1/16" = 1'-0"



NORTH
SHEET #: S2.02

**Typical Floor Framing Plan/
Frame Elevation**

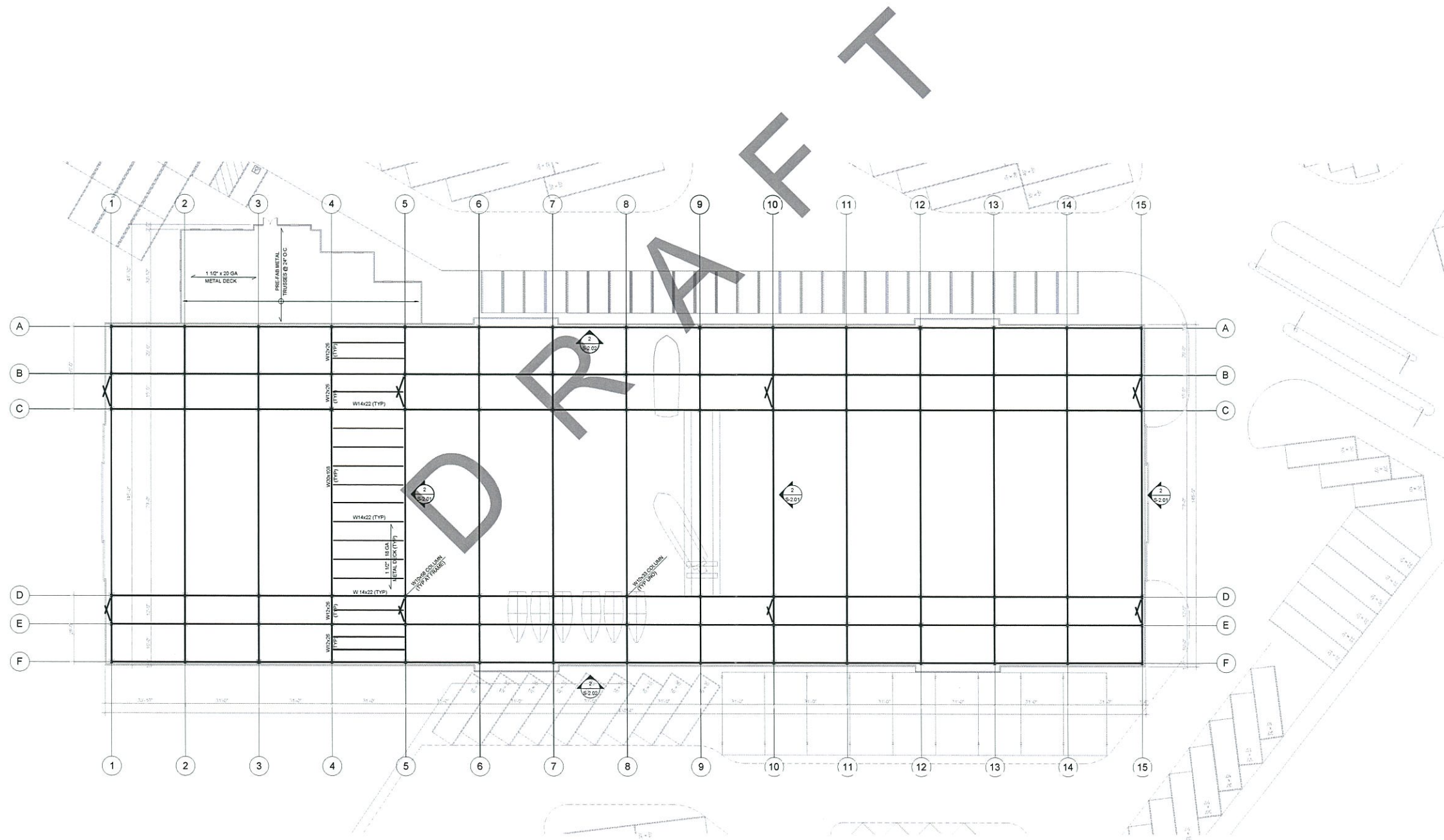
THIS DOCUMENT CONTAINS PROPRIETARY INFORMATION. IT IS THE PROPERTY OF MVE INSTITUTIONAL, INC. AND IS NOT TO BE REPRODUCED OR TRANSMITTED IN ANY FORM OR BY ANY MEANS, ELECTRONIC OR MECHANICAL, INCLUDING PHOTOCOPYING, RECORDING, OR BY ANY INFORMATION STORAGE AND RETRIEVAL SYSTEM. WITHOUT THE WRITTEN PERMISSION OF MVE INSTITUTIONAL, INC., NO PART OF THIS DOCUMENT IS TO BE REPRODUCED OR TRANSMITTED IN ANY FORM OR BY ANY MEANS, ELECTRONIC OR MECHANICAL, INCLUDING PHOTOCOPYING, RECORDING, OR BY ANY INFORMATION STORAGE AND RETRIEVAL SYSTEM.

MVE Institutional
Providing Sustainable Solutions

MVE INSTITUTIONAL, INC.
1700 MAIN STREET, SUITE 400
COSTA MESA, CALIFORNIA 92626
TEL: 949.261.1100 FAX: 949.261.1101
WWW.MVEINSTITUTIONAL.COM

DATE: April 11, 2013, 5:46pm - Drawing: U:\projects\1310131001_Dana Point Harbor Revitalization\1310131001_040413_S2.02 - 040413.dwg - User: J. J. Jones - Job Name: Dana Point Harbor - PM - BT - E.L.G.
Title: Structural Engineer

Date: 01/11/2017 2:48pm Drawing: C:\Users\mve\appdata\local\temp\25685333.Dwg Layout: S2.03 - Edited by: mveve - P:\Data\KPII\KPII - Job Name: Dana Point Harbor - 01 - PD - ELDG
 File: 2110117.dwg (1)11/20/2017 2:48pm



Roof Framing Plan 1/16" = 1' 0" 1

DANA POINT HARBOR REVITALIZATION

COUNTY OF ORANGE
 DANA POINT HARBOR DRIVE



kpi Consulting Engineers
 2949 Van Riper Avenue, Suite 200
 Irvine, California 92618-5077
 949.222.1822 Fax 949.222.8668

DATE: _____ Issue Date: _____
 PROJECT #: _____ Project Number: _____
 SCALE: 1/16" = 1' 0"



NORTH
 SHEET #: S2.03

Roof Framing Plan

THIS DOCUMENT CONTAINS PROPRIETARY INFORMATION OF MVE INSTITUTIONAL, INC. AND IS TO BE USED ONLY FOR THE PROJECT AND SITE SPECIFICALLY IDENTIFIED HEREIN. ANY REUSE OR REPRODUCTION OF THIS DOCUMENT WITHOUT THE WRITTEN PERMISSION OF MVE INSTITUTIONAL, INC. IS STRICTLY PROHIBITED. MVE INSTITUTIONAL, INC. ACCEPTS NO LIABILITY FOR ANY ERRORS OR OMISSIONS IN THIS DOCUMENT.

MVE Institutional
 Planning. Analyzing. Executing.

MVE INSTITUTIONAL, INC.
 7700 Main Street, Suite 400
 Irvine, California 92618
 949.453.3340 Fax 949.453.3341
 www.mve-institutional.com

FIXTURE SCHEDULE																	
ITEM	FIXTURE	ROUGH-IN CONNECTIONS						DESCRIPTION	ITEM	FIXTURE	ROUGH-IN CONNECTIONS						DESCRIPTION
		TRAP	WASTE	VENT	HOT WATER	COLD WATER	GAS				TRAP	WASTE	VENT	HOT WATER	COLD WATER	GAS	
TP 1	TRAP PRIMER (MULTIPLE DRAIN)	-	-	-	-	1/2"	-	MFAB NO. MR-500 TRAP PRIMER VALVE, BRASS BODY, ADJUSTABLE COMPLETE WITH M.D.U. DISTRIBUTION UNIT, 1/2" COPPER TYPE "P" PIPE TO EACH RECEPTOR. INSTALL PER MANUFACTURER'S RECOMMENDATIONS, COMPLETE BEHIND ACCESS PANEL WITH SHUT-OFF VALVE.	OD 1	OVERFLOW DRAIN	-	-	-	-	-	-	ZURN NO. ZG-100-DR-89, CAST IRON BODY, COMPLETE WITH CAST IRON DOME STRAINER, UNDERDECK CLAMP, AND 2" HIGH WATER DAM.
FD 1	FLOOR DRAIN (SEDIMENT BUCKET)	3"	3"	1-1/2"	-	-	-	ZURN NO. ZH-662-TS "EXTRA HEAVY DUTY DRAIN", 1/2" X 1/2" DUCO COATED CAST IRON BODY, COMPLETE WITH SQUARE NICKEL-BRONZE TOP SECURED WITH SLOTTED SCREWS, CLAMPING COLLAR, SEDIMENT BUCKET, AND P-TRAP WITH TRAP PRIMER CONNECTION.	HB 1	HOSE BBS (WALL)	-	-	-	-	3/4"	-	ACORN NO. B121-CP "BENT NOSE WITH FLANGE" HOSE BBS, WALL MOUNTED, CHROME PLATED POLISHED, WITH INTEGRAL VACUUM BREAKER, LOOSE KEY OPERATOR.
RD 1	ROOF DRAIN	SEE PLAN FOR SIZES						ZURN NO. ZG-100-DR-CR-84, CAST IRON BODY, COMPLETE WITH ADJUSTABLE EXTENSION SLEEVE, FLASHING COLLAR, STAINLESS STEEL GRAVEL STRainer, CAST IRON DOME STRAINER, SUMP RECEIVER, AND UNDERDECK CLAMP.									

LEGEND		
SYMBOL	ABBREVIATION	DESCRIPTION
	S OR W	SOL OR WASTE BELOW FLOOR OR GRADE
	SD	STORM DRAIN ABOVE FLOOR
	SD	STORM DRAIN BELOW FLOOR OR GRADE
	OD	OVERFLOW DRAIN ABOVE FLOOR
	V	SANITARY VENT
	CW	COLD WATER
	TP	TRAP PRIMER
	F	FIRE LINE
	AS	AUTOMATIC SPRINKLER LINE
		DIRECTION OF FLOW
	SOV	SHUT-OFF VALVE
	FCO	FLOOR CLEANOUT
	WCO	WALL CLEANOUT
		RISER UP
		RISER DOWN
	ABV	ABOVE
	BEL	BELOW
	CLG	CEILING
	CONT	CONTINUATION
	COTG	CLEANOUT TO GRADE
	DN	DOWN
	EXIST	EXISTING
	FLR	FLOOR
	FFE	FINISH FLOOR ELEVATION
	IE	INVERT ELEVATION
	POC	POINT OF CONNECTION
	PLCS	PLACES
	SLVE	SLEEVE
	VTR	VENT THRU ROOF
	YB	YARD BOX

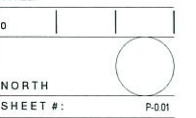
DRAFT

DANA POINT HARBOR REVITALIZATION

COUNTY OF ORANGE
DANA POINT HARBOR DRIVE



DATE: _____ Issue Date
PROJECT #: _____ Project Number
SCALE: _____



PLUMB. LEG., SCHEDULES, AND GEN. NOTES

NO CHANGE OF CONTRACT CONDITIONS IS TO BE MADE WITHOUT THE WRITTEN CONSENT OF THE ARCHITECT. THE ARCHITECT'S RESPONSIBILITY IS LIMITED TO THE WORK SHOWN ON THESE PLANS AND SCHEDULES. THE CONTRACTOR SHALL BE RESPONSIBLE FOR OBTAINING ALL NECESSARY PERMITS AND APPROVALS FROM THE LOCAL, STATE, AND FEDERAL AUTHORITIES. THE CONTRACTOR SHALL BE RESPONSIBLE FOR OBTAINING ALL NECESSARY PERMITS AND APPROVALS FROM THE LOCAL, STATE, AND FEDERAL AUTHORITIES. THE CONTRACTOR SHALL BE RESPONSIBLE FOR OBTAINING ALL NECESSARY PERMITS AND APPROVALS FROM THE LOCAL, STATE, AND FEDERAL AUTHORITIES.

MVE Institutional
Plexiblog Architecture Interiors

MVE Institutional Inc.
1900 Main Street, Suite 800
Irvine, CA 92614-1900
Tel: 949.453.3333
Fax: 949.453.3334
www.mve-architecture.com

OC DANA POINT HARBOR REVITALIZATION

COUNTY OF ORANGE
 DANA POINT HARBOR DRIVE
 DANA POINT, CALIFORNIA



DATE:

PROJECT #: 2011-40140

SCALE: 1/16" = 1'-0"

0

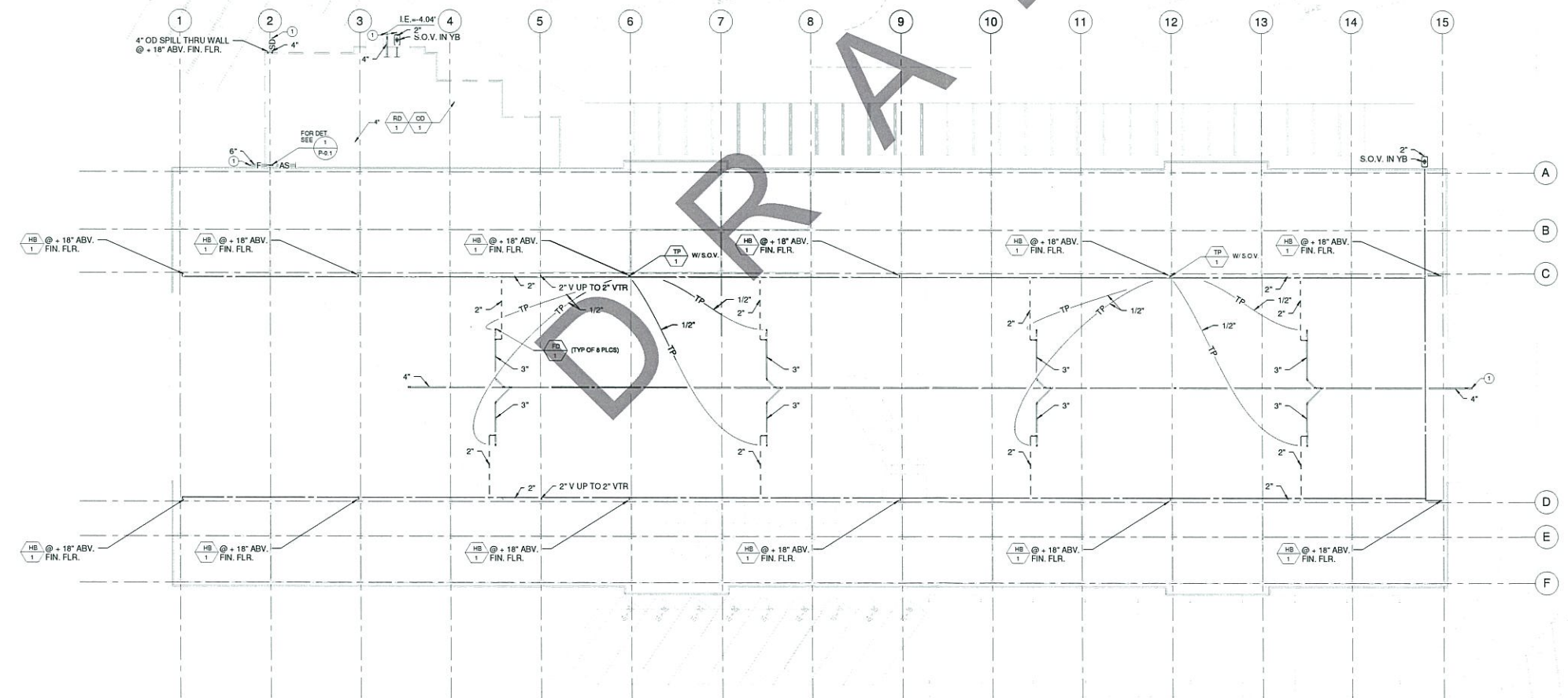
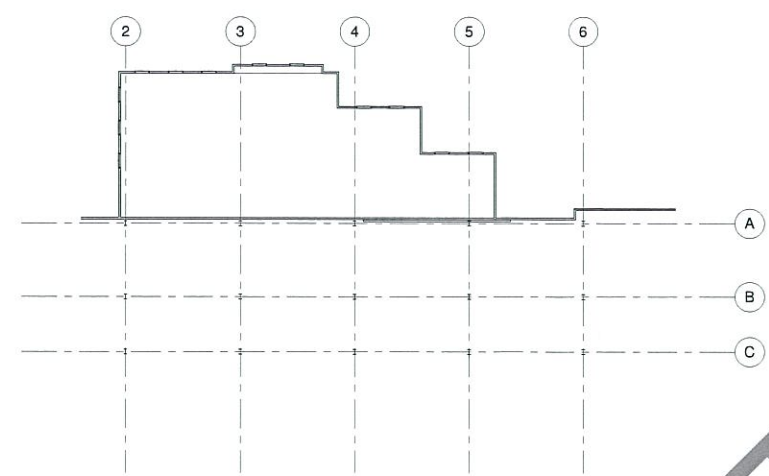
NORTH
 SHEET #: P-201

**PLUMBING
 LEVEL ONE &
 LEVEL TWO**

NOT TO SCALE
 ALL DIMENSIONS UNLESS OTHERWISE NOTED TO BE OTHERWISE, SEE CIVIL DRAWINGS FOR ALL DIMENSIONS AND LOCATIONS OF UTILITIES AND STRUCTURES. SEE CIVIL DRAWINGS FOR ALL DIMENSIONS AND LOCATIONS OF UTILITIES AND STRUCTURES. SEE CIVIL DRAWINGS FOR ALL DIMENSIONS AND LOCATIONS OF UTILITIES AND STRUCTURES. SEE CIVIL DRAWINGS FOR ALL DIMENSIONS AND LOCATIONS OF UTILITIES AND STRUCTURES.

MVE Institutional
 Planning Architecture Interiors

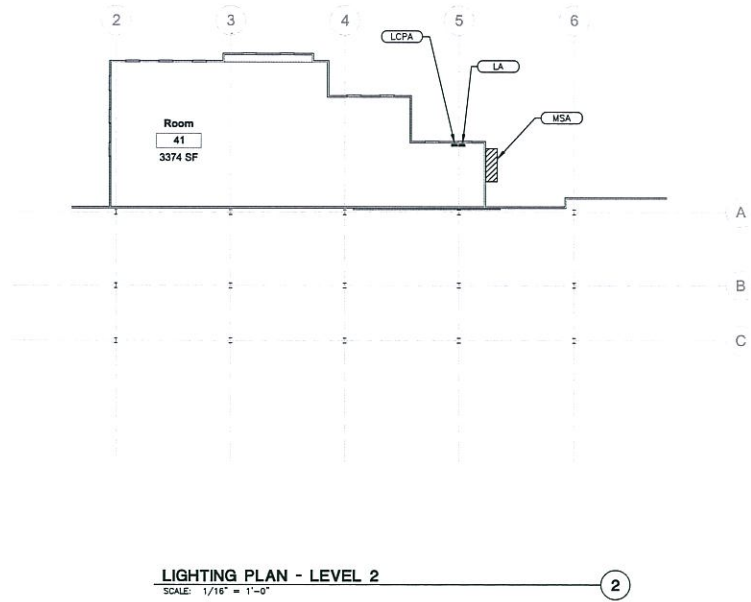
MVE Institutional Inc.
 1900 Main Street, Suite 400
 Dana Point, CA 92629
 (949) 251-3333
 www.mve-architect.com



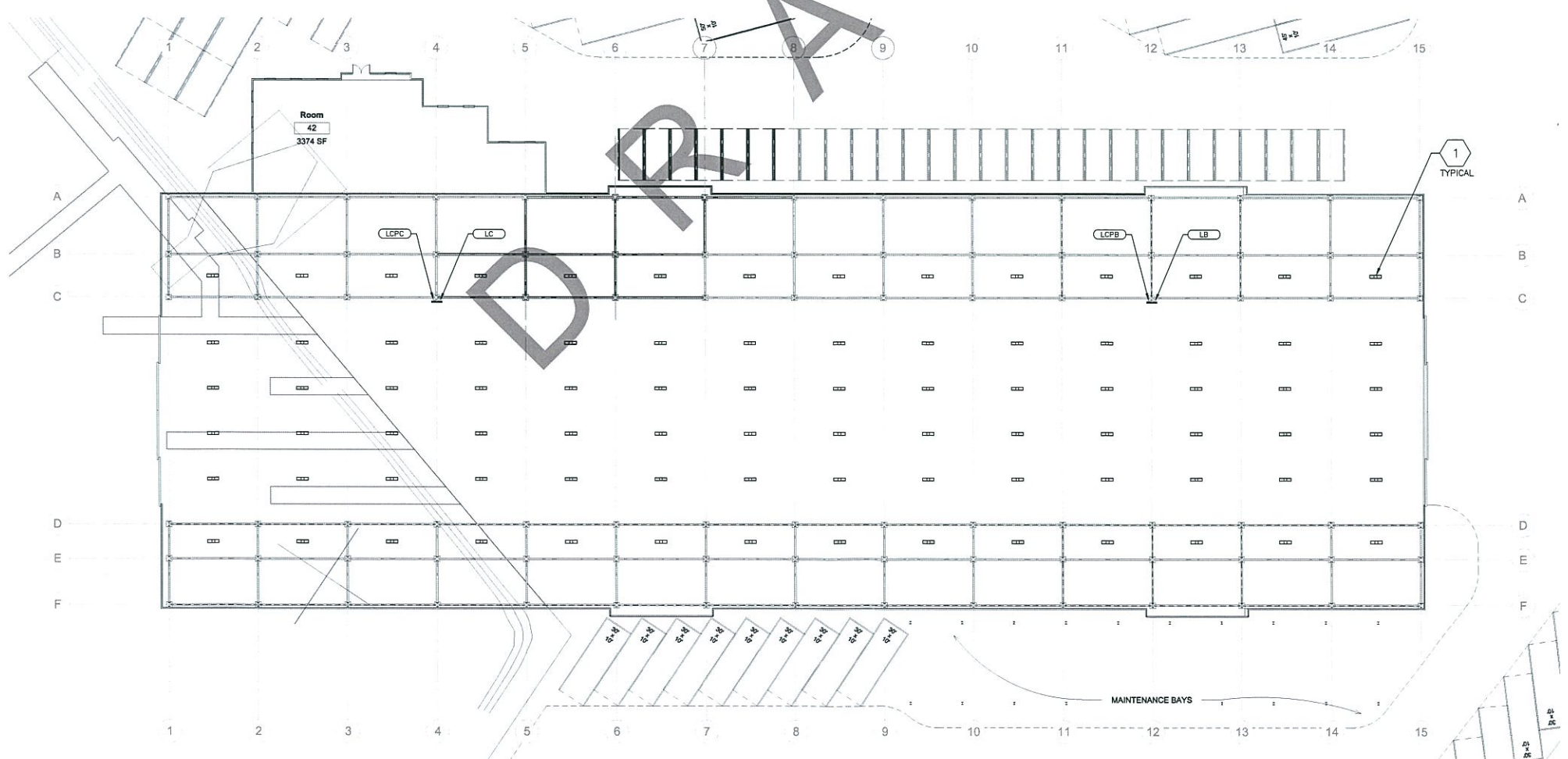
CONSTRUCTION NOTES:
 ① FOR CONTINUATION OF ALL UTILITIES SEE CIVIL DRAWINGS.

Level 2 SCALE 1/16" = 1'-0" 2

Level 1 SCALE 1/16" = 1'-0" 1



LIGHTING PLAN - LEVEL 2
SCALE: 1/16" = 1'-0" ②



LIGHTING PLAN - LEVEL 1
SCALE: 1/16" = 1'-0" ①

LIGHTING PLAN GENERAL NOTES:

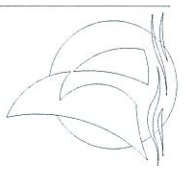
1. REFER TO ARCHITECTURAL PLANS FOR EXACT LOCATION & ELEVATION OF ALL LIGHTING FIXTURES AND ALL DEVICES. ALL WALL-MOUNTED DEVICE HEIGHTS SHALL BE VERIFIED WITH THE ARCHITECT PRIOR TO ROUGH-IN.
2. VERIFY EXACT CEILING CONSTRUCTION WITH ARCHITECTURAL REFLECTED CEILING PLAN AND PROVIDE LIGHTING FIXTURES WITH ALL NECESSARY MOUNTING HARDWARE.
3. ALL RECESSED FIXTURES SHALL BE PROVIDED WITH ALL REQUIRED STRUCTURAL SUPPORTS AS REQUIRED BY THE CURRENTLY ADOPTED ISSUE OF THE IBC, OR CBC WHERE ADOPTED, IN ADDITION TO ANY LOCAL CODES.
4. ALL COVE MOUNTED FIXTURES SHALL EXTEND THE FULL LENGTH OF THE COVE. CONTRACTOR TO FIELD MEASURE COVE LENGTH AND ORDER QUANTITY OF FIXTURES AS REQUIRED.
5. ALL DIMMING BRANCH CIRCUITS SHALL BE PROVIDED WITH A DEDICATED NEUTRAL CONDUCTOR FOR EACH ZONE/CHANNEL.
6. ALL FLUORESCENT DIMMING ZONES/CHANNELS SHALL BE PROVIDED WITH 3 LINE VOLTAGE CONDUCTORS (NEUTRAL, DIMMED HOT, SWITCHED HOT) OR 2 LINE VOLTAGE CONDUCTORS / CONTROL CONDUCTORS AS REQUIRED BY THE CONTROL/BALLAST TYPE.
7. ALL EMERGENCY BATTERY PACK FIXTURES SHALL BE PROVIDED WITH A CONSTANT HOT CONNECTION TO THE CHARGING LEAD. SEE GENERAL LIGHTING FIXTURE SCHEDULE NOTES FOR MORE INFORMATION.
8. REFER TO ARCHITECTURAL REFLECTED CEILING PLANS FOR EXIT SIGN CHEVRONS AND NUMBER OF FACES PER EXIT SIGN. ANY DISCREPANCIES BETWEEN EXIT SIGNS SHOWN ON THE ELECTRICAL AND ARCHITECTURAL PLANS SHALL BE BROUGHT TO THE ATTENTION OF THE ARCHITECT PRIOR TO ORDERING EXIT SIGNS.
9. WHEN EXPOSED CEILING OR OPEN GRID CONDITIONS OCCUR, THE CONTRACTOR WILL NEED TO PROVIDE THE FOLLOWING ITEMS:
- ALL BRANCH CIRCUITS SHALL BE IN EMT.
- ALL BRANCH CIRCUITS SHALL BE ROUTED NEATLY TRANNED AND IN PARALLEL TO STRUCTURES OR DUCT WORK. THE TERM "TRANNED" MEANS ALL PARALLEL CONDUITS SHALL MAINTAIN THE SAME SPATIAL RELATIONSHIP WITH EACH OTHER FOR ENTIRE RUN TO INCLUDE RADIUS BENDS AND SWEEPS.
- VISUALLY OBJECTIONABLE BRANCH CIRCUITS WILL BE REROUTED AT THE REQUEST OF THE ARCHITECT AT NO ADDITIONAL COST.
10. ALL LED REMOTE INDICATORS FOR DUCT DETECTORS AND FIRE/SMOKE DAMPERS REQUIRED BY THE LOCAL AHJ SHALL BE LOCATED IN CEILING IN COORDINATION WITH ARCHITECT PRIOR TO ANY ROUGH-IN.
11. RECESSED FIXTURES LOCATED IN A FIRE-RATED CEILING OR WALL SHALL BE PROVIDED WITH A 5-SIDED RATED ENCLOSURE SO CONSTRUCTED AS TO ALLOW CODE AND MANUFACTURER-REQUIRED CLEARANCES BETWEEN THE FIXTURE AND THE ENCLOSURE.
12. UNLESS SPECIFICALLY SHOWN AS (E), (R), (EP), (D), EXISTING OR NON-BUILD, ALL ELECTRICAL DEVICES SHOWN ARE NEW.
13. REFER TO GENERAL POWER PLAN NOTES AND COMMUNICATIONS PATHWAYS GENERAL NOTES FOR ADDITIONAL REQUIREMENTS WHEN POWER AND/OR DATA DEVICES ARE SHOWN ON THIS PLAN.

PLAN NOTES:

① --

OC DANA POINT HARBOR REVITALIZATION

COUNTY OF ORANGE
DANA POINT HARBOR DRIVE
DANA POINT, CALIFORNIA



KONSORTIUM 1
1802 E Warner Ave - Santa Ana, CA 92705
(714) 836-4000 - (714) 836-4000
www.konsortium1.com
JERRY LEONHART



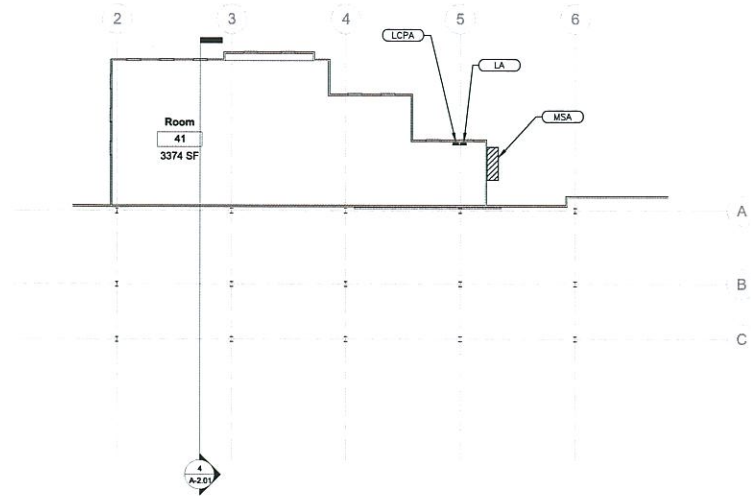
DATE:
PROJECT #: 2011-02140
SCALE: NOTED
0
NORTH
SHEET #: E-201

LIGHTING PLAN

THIS DOCUMENT CONTAINS INFORMATION PROPRIETARY TO MVE INSTITUTIONAL, INC. AND IS INTENDED TO BE USED ONLY FOR THE PROJECT AND SITE SPECIFICALLY IDENTIFIED HEREIN. ANY REUSE OR REPRODUCTION OF THIS DOCUMENT WITHOUT THE WRITTEN PERMISSION OF MVE INSTITUTIONAL, INC. IS STRICTLY PROHIBITED. ALL RIGHTS RESERVED. © 2011 MVE INSTITUTIONAL, INC.

MVE Institutional
Designing Architecture Interiors

MVE INSTITUTIONAL, INC.
1700 Main Street, Suite 400
Santa Ana, CA 92705
Tel: 714.836.4000
www.mve.com



LIGHTING PLAN - LEVEL 2
SCALE: 1/16" = 1'-0" ②

**COMMUNICATIONS PATHWAYS
GENERAL NOTES:**

- CONDUITS SHALL (a) CONTAIN NO CONTIGUOUS SECTIONS LONGER THAN 30M (98 FT.), AND, (b) CONTAIN NO MORE THAN (2) 90° BENDS OR (1) REVERSE BEND WITHOUT INSTALLING A PULLBOX. CONDUITS IN PLACE OF PULLBOXES ARE UNACCEPTABLE.
- CONDUITS SHALL CONTAIN PLASTIC OR NYLON PULL TAPE RATED AT 200 LBS. WITH A MINIMUM OF 5 FEET OF EXTRA PULL TAPE COILED AT EACH END.
- CONDUIT BEND RADIUS SHALL BE (a) A MINIMUM OF 6 TIMES THE INTERNAL CONDUIT DIAMETER FOR CONDUITS 2" IN DIAMETER OR LESS, AND, (b) 10 TIMES THE INTERNAL CONDUIT DIAMETER FOR CONDUITS MORE THAN 2" IN DIAMETER.
- TERMINATE CONDUITS AND SLEEVES THAT PROTRUDE THROUGH STRUCTURAL FLOORS 2"-3" ABOVE THE FLOOR SURFACE.
- INSTALL BUSHINGS AND BELL ENDS AS REQUIRED ON ALL CONDUITS.
- FLEX CONDUIT IS GENERALLY UNACCEPTABLE FOR USE AS A COMMUNICATIONS CONDUIT EXCEPT AT SEISMIC JOINTS AND AS APPROVED IN WRITING BY THE ENGINEER.
- ALL UNDER SLAB OR IN-SLAB CONDUITS SHALL BE INSTALLED IN A MANNER THAT PREVENTS WATER INFILTRATION OF THE CONDUIT. IT IS THE CONTRACTOR'S RESPONSIBILITY TO ENSURE GROUND WATER, RAIN WATER OR CONSTRUCTION WATER IS PREVENTED FROM ENTERING AND/OR REMOVED FROM THE CONDUITS PRIOR TO PLACEMENT OF COMMUNICATIONS CABLES. SEE SITE UTILITY PLAN NOTES FOR ADDITIONAL UNDERGROUND COMMUNICATIONS CONDUIT SEALING REQUIREMENTS.
- ALL PULLBOXES SHALL BE SIZED AND INSTALLED PER ANSI/TIA-568B. PULLBOXES FOR UNDER FLOOR CONDUIT RUNS ARE NOT PERMITTED UNLESS OTHERWISE NOTED. PULLBOXES FOR OVERHEAD CONDUIT RUNS SHALL BE LOCATED ABOVE ACCESSIBLE CEILING WITHIN THE ACCESSIBLE CEILING SPACE AND SUPPORTED INDEPENDENTLY FROM THE STRUCTURE AND CONDUIT SUPPORTS. PULLBOXES FOR ROOF MOUNTED OR EXTERIOR ABOVE GRADE APPLICATIONS SHALL BE NEMA 3 RATED. PULLBOXES SHALL BE SIZED ACCORDING TO THE FOLLOWING:

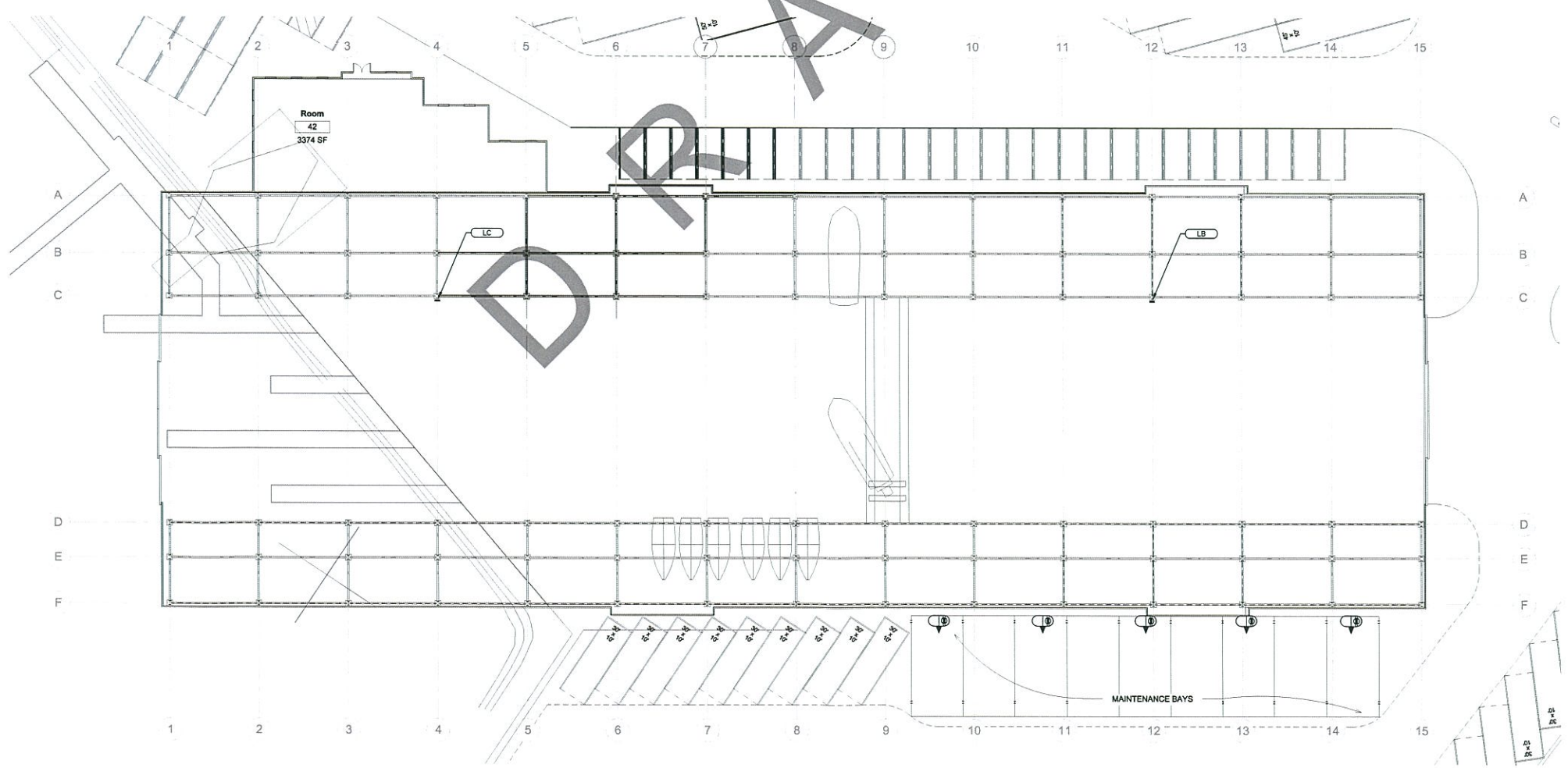
CONDUIT SIZE	WIDTH	LENGTH	DEPTH	WIDTH INCREASE PER ADDITIONAL CONDUIT
1"	4"	16"	3"	2"
2"	8"	36"	5"	5"
3"	12"	48"	5"	6"
4"	15"	60"	8"	8"

- FOR OTHER CONDUIT SIZES REFER TO ANSI/TIA-568B TABLE 12 - LATEST PUBLISHED EDITION.
- CONDUIT(S) SHALL EXIT A PULLBOX ON THE WALL OPPOSITE THE WALL ENTERED.
 - PROVIDE LABELING OF EACH CONDUIT PER GENERAL ELECTRICAL SPECIFICATIONS.
 - PROVIDE INTERNAL/EXTERNAL GAS AND WATER TIGHT MECHANICAL SEALING/PULLING OF EACH BUILDING ENTRY CONDUIT AS SPECIFIED ELSEWHERE IN THE DRAWINGS AND SPECIFICATIONS.

POWER PLAN GENERAL NOTES:

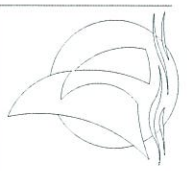
- ALL RECEPTACLES ON COMMON WALLS SHALL BE SEPARATE BOXES AND OFFSET 24" MINIMUM.
- ALL PENETRATIONS THROUGH FIRE RATED WALLS SHALL BE PROTECTED FROM THE SPREAD OF FIRE WITH AN APPROVED FIRESTOP SYSTEM EQUAL OR GREATER THAN THE FIRE RATING OF THE WALL.
- ALL WALL-MOUNTED DEVICE HEIGHTS SHALL BE VERIFIED WITH THE ARCHITECT PRIOR TO ROUGH-IN.
- ALL FURNITURE FEED LOCATIONS TO BE VERIFIED WITH ARCHITECT AND FURNITURE VENDOR PRIOR TO ROUGH-IN.
- ALL FURNITURE WHIPS SHALL BE TRIMMED TO REDUCE EXCESS WHIP LENGTH.
- WHEN EXPOSED CEILING OR OPEN GRID CONDITIONS OCCUR, THE CONTRACTOR WILL NEED TO PROVIDE THE FOLLOWING ITEMS:
--ALL BRANCH CIRCUITS SHALL BE IN EMT.
--ALL BRANCH CIRCUITS SHALL BE ROUTED NEATLY AND IN PARALLEL TO STRUCTURES OR DUCT WORK.
USUALLY OBJECTIONABLE BRANCH CIRCUITS SHALL BE REROUTED AT THE REQUEST OF THE ARCHITECT AT NO ADDITIONAL COST.
- EXPOSED CABLE/CONDUCTORS INSTALLED IN A PLENUM SPACE SHALL CONFORM TO NEC, OR CEC WHERE ADOPTED, ARTICLE 300.22(C).
- PROVIDE G.F.C.I. TYPE RECEPTACLE(S) WITHIN 6 FEET OF ANY SINK OR THERAPEUTIC TUB, SERVING ANY DRINKING FOUNTAIN OR VENDING MACHINE, AND WITHIN ANY KITCHEN SPACE.
- UNLESS SPECIFICALLY SHOWN AS (E), (P), (ER), (D), EXISTING OR NON-BUILD, ALL ELECTRICAL DEVICES SHOWN ARE NEW.

PLAN NOTES:
① 7777



LIGHTING PLAN - LEVEL 1
SCALE: 1/16" = 1'-0" ①

OC DANA POINT HARBOR REVITALIZATION
 COUNTY OF ORANGE
 DANA POINT HARBOR DRIVE
 DANA POINT, CALIFORNIA



KONSORTIUM 1
1802 E Wilcox Ave - Santa Ana, CA 92705
714-966-6000 - (714) 966-6000 fax
www.konsortium1.com
JERRY LEONARDI



DATE:
PROJECT #: 2011-02140
SCALE: NOTED
0
NORTH
SHEET #: E301

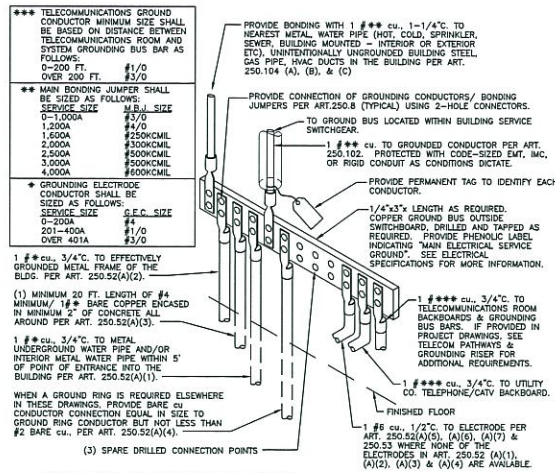
POWER PLAN

THIS DOCUMENT CONTAINS PROPRIETARY INFORMATION AND IS NOT TO BE REPRODUCED OR TRANSMITTED IN ANY FORM OR BY ANY MEANS, ELECTRONIC OR MECHANICAL, INCLUDING PHOTOCOPYING, RECORDING, OR BY ANY INFORMATION STORAGE AND RETRIEVAL SYSTEM, WITHOUT THE WRITTEN PERMISSION OF THE ARCHITECT.

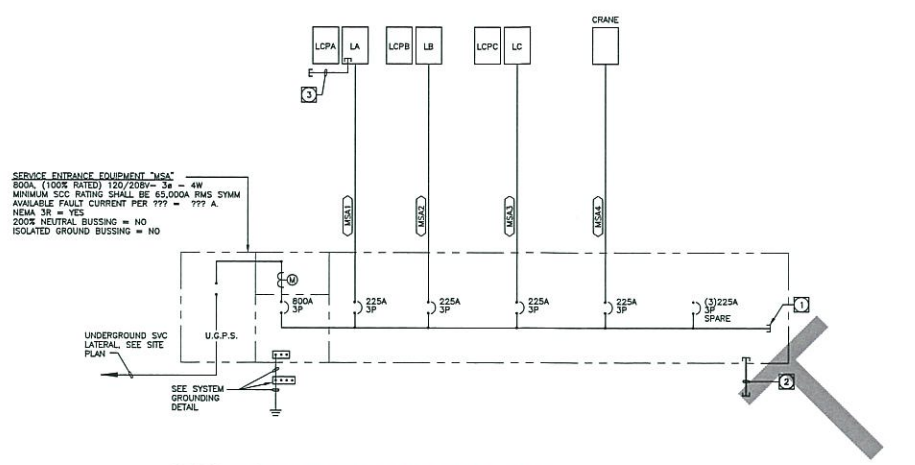
MVE Institutional
Planning. Architecture. Interiors

MVE INSTITUTIONAL, INC.
1700 MAIN STREET, SUITE 400
DANA POINT, CALIFORNIA 92629
TEL: 949.349.2300 FAX: 949.349.2301
WWW.MVE-ARCHITECTS.COM

P11129 - Dana Point Harbor V03.Dwg - Sheet Storage\CD\11300055-EX11.dwg, EX11, 4/16/2011 4:46:18 PM, Version: 1.1



SYSTEM GROUNDING DETAIL
SCALE: N.T.S.



SINGLE LINE DISTRIBUTION DIAGRAM
SCALE: N.T.S.

D R A F T

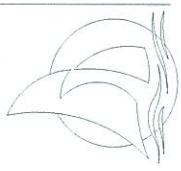
GENERAL SINGLE LINE DIAGRAM NOTES:

- ALL SWITCHGEAR SHALL BE SQUARE D OR EQUAL BY CUTLER-HAMMER, RSE-SIERRA, G.E., OR SIEMENS.
- ALL ITEMS DEPICTED ON THE SINGLE LINE DRAWINGS SHALL BE ASSUMED AS NEW U.O.N.
- ALL OVERCURRENT DEVICES IN AN INDIVIDUAL PIECE OF EQUIPMENT SHALL HAVE AN AIC RATING EQUAL TO THE OVERCURRENT RATING OF THE EQUIPMENT-SERIES RATING OF DEVICES WITHIN A PIECE OF EQUIPMENT IS NOT ALLOWED. SEE SPECIFICATIONS FOR MORE INFORMATION.
- SERIES RATED DEVICES SHALL HAVE BEEN INVESTIGATED BY UL IN COMBINATION WITH THE END USE EQUIPMENT AND IN THE EQUIPMENT IN WHICH THESE DEVICES ARE USED SHALL BE MARKED WITH A SERIES RATING. ALL EQUIPMENT SHALL BE MARKED IN ACCORDANCE WITH NEC (OR CEC-WHERE ADOPTED) REQUIREMENTS. SEE SPECIFICATIONS FOR MORE INFORMATION. WHERE SERIES RATINGS ARE ALLOWED, THE EQUIPMENT SHALL BE LEGIBLY MARKED IN THE FIELD TO INDICATE A SERIES COMBINATION RATING, WHICH SHALL BE READILY VISIBLE AND STATE THE FOLLOWING:
CAUTION - SERIES COMBINATION SYSTEM RATED AT 75,777 AMPERES, USE ONLY IDENTIFIED REPLACEMENT COMPONENTS IN THIS SYSTEM.
WHERE 75,777 REPRESENTS AVAILABLE FAULT CURRENT. SEE SPECIFICATIONS FOR PLACARD REQUIREMENTS.
- ALL TERMINATIONS AND ENCLOSURES SHALL BE RATED FOR USE WITH 75 DEGREE CELSIUS CONDUCTORS.
- ALL SERVICE ENTRANCE EQUIPMENT RATED AT 400A OR GREATER SHALL BE PROVIDED WITH A BACKUP-RATED, SOLID STATE MAIN OVERCURRENT DEVICE AND BUSING RATED AT 100% OPERATION. NON-SERVICE ENTRANCE SWITCHBOARDS AND DISTRIBUTION BOARDS LARGER THAN 800A SHALL BE PROVIDED WITH A SOLID STATE MAIN OVERCURRENT DEVICE IF SHOWN ON PLANS, AND WITH BUSING RATED AT 100% OPERATION. ALL NON-SERVICE ENTRANCE SWITCHBOARDS AND DISTRIBUTION BOARD MAIN OVERCURRENT DEVICES SHALL BE BACKUP-RATED. BACKUP RATING SHALL COMPLY WITH NEC OR CEC WHERE ADOPTED, §90.54(B)(5). SEE SPECIFICATIONS FOR ADDITIONAL REQUIREMENTS REGARDING CIRCUIT BREAKERS.
- ALL SWITCHBOARDS AND DISTRIBUTION BOARDS SHALL HAVE:
 - 3" THICK ALUMINUM BUSING WITH RECTANGULAR CROSS SECTION. HORIZONTAL AND VERTICAL BUSING SHALL BE FULL LENGTH AND SHALL HAVE PROVISIONS FOR FUTURE EXTENSIONS. ALL BUSING SHALL HAVE MINIMUM WITHSTAND RATING EQUAL TO THE AVAILABLE FAULT CURRENT INDICATED. ALL VERTICAL AND HORIZONTAL BUSING SHALL BE RATED AT FULL CAPACITY IN ALL SWITCHBOARD AND DISTRIBUTION BOARD SECTIONS. PROVIDE 100% NEUTRAL BUSING MINIMUM UNLESS OTHERWISE NOTED. PROVIDE FULL LENGTH GROUND BUS AND, WHERE INDICATED ON PLANS, ISOLATED GROUND BUSING. PROVIDE REAR WIRE WAY IN ALL SWITCHBOARD SECTIONS.
 - LUGS SUITABLE FOR USE WITH COPPER OR ALUMINUM CONDUCTORS LISTED FOR USE WITH 75 DEGREE CELSIUS AMPACITY CONDUCTORS.
 - PERMANENT PLACARD(S) MARKED PER THE SPECIFICATIONS AND PER NEC (OR CEC-WHERE ADOPTED) SECTIONS 225.37, 230.21(E), 690.56(B) & (C), 692.56, 700.6, 701.9, AND 702.8 DENOTING THE PRESENCE OF ADDITIONAL SERVICES, PHOTOVOLTAIC SYSTEMS, FUEL CELLS, EMERGENCY OR STAND-BY POWER SOURCES AS APPLICABLE.
- CONTRACTOR SHALL SUBMIT SWITCHBOARD SHOP DRAWINGS TO THE SERVING UTILITY FOR APPROVAL PRIOR TO FABRICATION. CONTRACTOR SHALL SECURE CONFIRMATION THAT THE PROPOSED SWITCHBOARD COMPLIES WITH ELECTRIC UTILITY COMPANY REGULATIONS.
- CONTRACTOR SHALL SUBMIT SHOP DRAWINGS PER THE SPECIFICATIONS FOR SWITCHBOARDS, DISTRIBUTION BOARDS, TRANSFORMERS, PANEL BOARDS AND ALL OTHER DEVICES SHOWN ON THE SINGLE LINE PRIOR TO FABRICATION.
- ALLOWABLE DIMENSIONS IN MAIN ELECTRICAL ROOM ARE A CRITICAL COORDINATION ITEM. CONTRACTOR SHALL PROVIDE 1/4" = 1'-0" SCALE DRAWINGS WITH SWITCHGEAR SUBMITTALS SHOWING THAT ALL PROPOSED EQUIPMENT WILL FIT IN THE SPACE PROVIDED. SUBMITTALS WITHOUT THIS DRAWING SHALL BE REJECTED AS INCOMPLETE.
- UNLESS SPECIFICALLY SHOWN AS (E), (F), (R), (D), EXISTING OR NON-BUILD, ALL ELECTRICAL DEVICES SHOWN ARE NEW.
- SEE POWER SYSTEMS STUDY SPECIFICATION FOR ADDITIONAL REQUIREMENTS. ALL REQUIRED POWER SYSTEMS STUDIES MUST BE COMPLETED AND SUBMITTED WITH SWITCHGEAR SUBMITTAL. FAILURE TO DO SO WILL PREVENT THE ENGINEER FROM EFFECTIVELY EVALUATING THE SUBMITTAL, AND SHALL RESULT IN REJECTION OF THE SWITCHGEAR SUBMITTAL AS INCOMPLETE.
- WHERE REQUIRED BY THE LOCAL AUTHORITY HAVING JURISDICTION OR WHERE A NEW GROUND FAULT PROTECTIVE DEVICE IS BEING INSTALLED, A GROUND FAULT SYSTEM TEST SHALL BE CONDUCTED BY AN INDEPENDENT TESTING AGENCY PER NEC (OR CEC-WHERE ADOPTED) 230.95(C). THE GROUND FAULT SYSTEM TEST SHALL BE PERFORMED IN THE PRESENCE OF THE LOCAL AUTHORITY HAVING JURISDICTION. VERIFICATION OF DEVICE SETTINGS PER THE POWER SYSTEMS STUDY SPECIFICATION SHALL BE PERFORMED BY THE SAME INDEPENDENT TESTING AGENCY. THE GROUND FAULT TEST RESULTS SHALL BE DELIVERED TO THE ENGINEER OF RECORD.

SPECIFIC SINGLE LINE NOTES:

- BUSING SHALL BE PROVIDED FOR FUTURE BUS EXTENSION TO FUTURE DISTRIBUTION SYSTEM.
- PROVIDE (1) 4" O.D. FOR EVERY 800 AMPS OF SERVICE SIZE (MINIMUM OF ONE) STUBBED OUTSIDE THE BUILDING TO THE NEAREST PLANTER AREA. CAP AND MARK.
- PROVIDE (4) 1" O.D. STUBBED OUTSIDE THE BUILDING TO THE NEAREST PLANTER AREA. CAP AND MARK.

OC DANA POINT HARBOR REVITALIZATION
COUNTY OF ORANGE
DANA POINT HARBOR DRIVE
DANA POINT, CALIFORNIA



DATE:
PROJECT #: 2011-40140
SCALE: NOTED
0
NORTH
SHEET #: E401

SINGLE LINE DIAGRAM

THIS DOCUMENT CONTAINS PROPRIETARY INFORMATION AND IS THE PROPERTY OF MVE INSTITUTIONAL, INC. AND IS NOT TO BE REPRODUCED OR TRANSMITTED IN ANY FORM OR BY ANY MEANS, ELECTRONIC OR MECHANICAL, INCLUDING PHOTOCOPYING, RECORDING, OR BY ANY INFORMATION STORAGE AND RETRIEVAL SYSTEM. ANY UNAUTHORIZED REPRODUCTION OR TRANSMISSION OF THIS DOCUMENT IS STRICTLY PROHIBITED. CONTACT MVE INSTITUTIONAL, INC. FOR PERMISSION TO REPRODUCE OR TRANSMIT THIS DOCUMENT. © 2011 MVE INSTITUTIONAL, INC. ALL RIGHTS RESERVED. E-COMM-001

MVE Institutional
Planning Architects Planners

MVE INSTITUTIONAL, INC.
1700 MAIN STREET, SUITE 400
DANA POINT, CALIFORNIA 92629
TEL: 949.349.2300 FAX: 949.349.2301
WWW.MVEINSTITUTIONAL.COM

